



Vanity Elite Premium



Description

The LITELUME™ Vanity Elite Premium (LL-VEP) features a die-formed cold rolled steel housing in satin nickel or oil rubbed bronze with a high transmission acrylic shade for an elegant soft appearance.

Applications: Hallways, Vanity lighting

Fixture Information

Size:	24W
Housing:	Die-formed cold rolled steel
Finish:	Protective powder coat
Color:	Standard: Satin Nickel (SN) Standard: Oil Rubbed Bronze (ORB)
Mounting:	Standard: Wall Mount
Lens:	High transmission acrylic
CRI:	90
Dimming:	Yes, 0-10v Dimming level minimum 3%, flicker free
Power Factor:	.98
THD:	<10%
Voltage:	Standard: 120-277V
Warranty:	5-Year Limited Warranty

Performance Data

Lumen Output:

1980 lm

Lumens Per Watt (typical):

82.5 lm/W

CCT:

3000K

Lifespan:

60,000 hrs

Ratings & Certificates

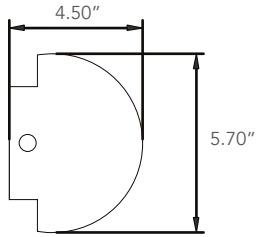
ETL/cETL Listed
Energy Star
CEC Listed
JA8
JA10
Flicker Free





Dimension

Item	Width	Height	Length
24W	5.70"	4.50"	24.50"





Project Name	
Catalog #	
Job Type	
Prepared By	
Notes	

Fixture Ordering Information

Part #	Wattage	Lumens	Kelvin	Voltage	Color
LL-VEP-24-30-ORB	24	1980	3000	120-277	Oil Rubbed Bronze
LL-VEP-24-30-SN	24	1980	3000	120-277	Satin Nickel