



## Features:

- Replaces a 1000W DE 1:1
- Ideally Suited for GH Supplemental or Indoor Top Lighting
- Industry Leading Performance
- Patented Tunable Spectrum (USPN 9,820,447;10,159,198; CAPN CA 2994308C)
- Natural White Light
- Patent Pending Thermal Solution
- Powder Coated Aluminum Housing
- UL8800 Horticulture Approved
- Made in the USA

## Specifications:

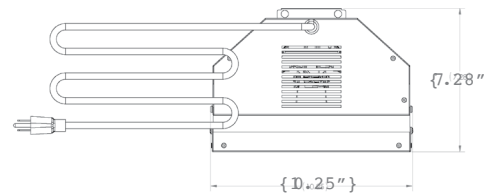
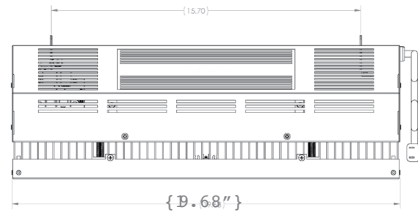
Light Source	L/H/W   Weight
LED	19.68" / 7.28" / 10.25"   15lbs
Spectra	Mounting Height
Patented Multi-White Daylight Analog	>36 Inches Above Canopy
Efficacy (640W)	Operating Temperature
2.0 μmol/J	0°F - 90°F
PPF (640W)	Thermal Management
1280 μmol	PATENT PENDING INFINITE LIFE AIR MOVER
Input Power	Dimming
640W MAX	0-10V / PWM
Input Voltage / Current (640W)	Lifetime per TM21 L70 / L90
120 @5.3A   240 @ 2.7A   277 @ 2.3A	80K hrs / 36K hrs

## Warranty/Listing:

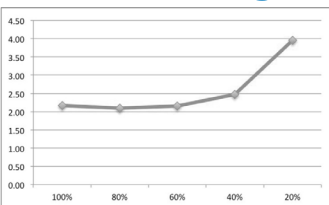
- 5-year standard warranty.



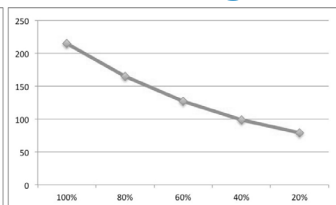
## Dimensions:



## PPF/J Dimming

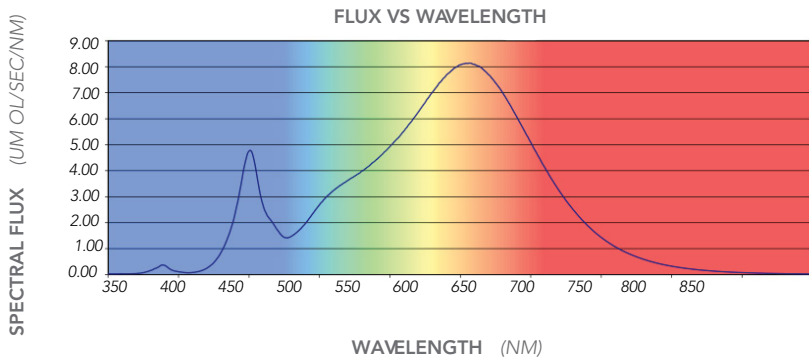
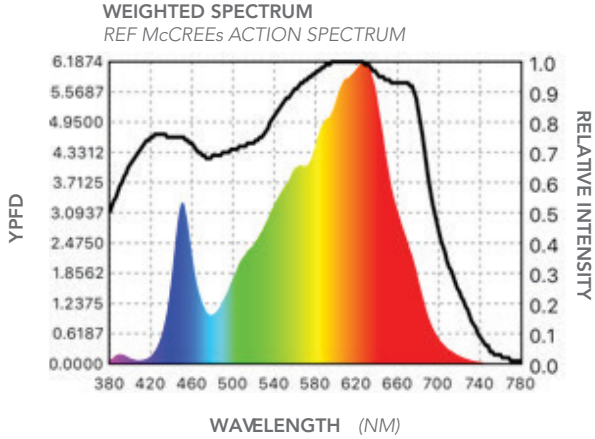


## PPF Dimming





# Electrical Data:



	WAVELENGTH RANGE (NM)	PHOTON FLUX (UMOL/SEC)
UVA	380 - 390	3.01678
	390 - 400	1.942521
	400 - 410	0.612087
	410 - 420	0.949889
VIOLET	420 - 430	3.460108
	430 - 440	12.0363
	440 - 450	38.19757
	450 - 460	46.98837
BLUE	460 - 470	28.05731
	470 - 480	18.29606
	480 - 490	18.3791
	490 - 500	25.25107
CYAN	500 - 510	34.62888
	510 - 520	42.18497
	520 - 530	47.46799
	530 - 540	51.72017
GREEN	540 - 550	56.16792
	550 - 560	61.78926
	560 - 570	69.103
	570 - 580	77.60798
YELLOW	580 - 590	85.98498

	WAVELENGTH RANGE (NM)	PHOTON FLUX (UMOL/SEC)
ORANGE	590 - 600	92.38846
	600 - 610	94.54355
	610 - 620	92.10387
	620 - 630	85.1003
RED	630 - 640	75.21533
	640 - 650	63.24295
	650 - 660	51.55666
	660 - 670	40.30801
	670 - 680	30.99211
	680 - 690	23.94367
	690 - 700	18.00129
	700 - 710	13.42406
INFRARED	710 - 720	9.884298
	720 - 730	7.291906
	730 - 740	5.425936
	740 - 750	4.064828
	750 - 760	3.045051
	760 - 770	2.32743
	770 - 780	1.872185



<b>Project Name</b>	
<b>Catalog #</b>	
<b>Job Type</b>	
<b>Prepared By</b>	
<b>Notes</b>	

### Fixture Ordering Information

Model	Power		Spectrum		Input Voltage		Cord	
LL-CT141	640	640W	V U	40/57 (standard) 30/50	ST HV	90-305VAC (standard) 180-528VAC	# #W #N5 #N6 #L7	Length (10' standard) Whip (no plug) 5-15P 6-15P L7-15P