



PRODUCT CATALOG





Who is LITELUME?

LITELUME Corporation is an American based manufacturer of commercial/industrial LED lighting fixtures. We provide a high quality and diverse product offering while offering unmatched customer service. With over 25 years of experience in the LED lighting industry, the partners at LITELUME Corporation continuously strive to be on the forefront of new technology. We constantly work to represent our core values of integrity, honesty, and dedication in everything we do at LITELUME Corporation.



Table of Contents

Company Culture	02	Table of Content	04
Products			
LED High Bay	05	LED Bollard	62
LED Linear	13	LED Wall Pack	64
LED Troffer	15	LED Canopy	75
LED Panel	18	LED Sports Light	80
LED Wrap Around	20	Amberlume Series	82
LED Vaportite	22	LED Bulkhead	86
LED Strip	24	LED Retrofit Kit	90
LED Downlight	26	LED Vandal Resistant	93
Decorative & Residential	32	LED Hazardous Location	96
LED Area Light	45	LED Explosion Proof	101
LED Roadway	48	Horticulture	104
LED Flood Light	51	RGB	109
LED Post Top	56	Exit & Emergency	111

LED HIGHBAY



High Bay Round UFO Econolume Series

Size: 60W-240W



*Not all product variations listed on this page are DLC qualified. Visit www.designlights.org/search to confirm qualification

Description:

The LITELUME™ LED High Bay Round UFO Econolume Series (LL-HBRUECO) is commercial luminaire constructed with a IP66 rated one piece die cast housing suitable for both indoor and outdoor applications.

Characteristics:

Lumen Output:	9300 to 37,200 lm
Lumens per watt (typical):	155 lm/W
CCT:	4000K, 5000K
Distribution:	HB
Lifespan:	Features Spec Grade LED's with up to 100,000 running hours

High Bay Round High Power

Size: 140W-410W



*Not all product variations listed on this page are DLC qualified. Visit www.designlights.org/search to confirm qualification

Description:

The LITELUME™ LED High Bay Round High Power (HBRHP) is a low profile high bay luminaire constructed with a IP65 rated one piece die cast housing suitable for both indoor and outdoor applications. Featuring a proprietary optical system, Inventronics driver & premium LED's boasting up to 190 LPW making this fixture ideal for high illumination high bay applications.

Characteristics:

Lumen Output:	26,600 to 72,000 lm
Lumens per watt (typical):	176 to 190 lm/W
CCT:	5000K
Distribution:	120°
Lifespan:	Features Inventronics driver & premium LED's with up to 100,000 running hours

High Bay Round Premium

Size: 40W-230W



Description:

The LITELUME™ LED High Bay Round Premium (LL-HBRP) is a new technological luminaire constructed with a IP65 rated die cast housing suitable for both indoor and outdoor applications. Featuring a stylish design while upholding maximum durability and reliability. Ideal for a variety of commercial and industrial lighting applications. Controls ready.

Characteristics:

Lumen Output:	7,000 to 40,000 lm
Lumens per watt (typical):	175 lm/W
CCT:	4000K, 5000K
Distribution:	120°
Lifespan:	Up to 100,000 running hours

High Bay Round UFO

Size: 135W-200W



Description:

The LITELUME™ LED High Bay Round UFO (LL-HBRU) is an industrial luminaire constructed with a IP65 rated one piece die cast housing suitable for both indoor and outdoor applications. Featuring multiple distribution options making this fixture ideal for all high bay applications.

Characteristics:

Lumen Output:	19,206 to 29,700 lm
Lumens per watt (typical):	142 to 149 lm/W
CCT:	4000K, 5000K
Distribution:	120°
Lifespan:	Up to 100,000 running hours

*Not all product variations listed on this page are DLC qualified. Visit www.designlights.org/search to confirm qualification

High Bay Round

Size: 67W-215W



*Not all product variations listed on this page are DLC qualified. Visit www.designlights.org/search to confirm qualification

Description:

The LITELUME™ LED High Bay Round (LL-HBR) is a low profile luminaire constructed with a IP65 rated one piece die cast housing suitable for both indoor and outdoor applications. Featuring a proprietary optical system making this fixture ideal for all high bay applications.

Characteristics:

Lumen Output:	9,100 to 30,000 lm
Lumens per watt (typical):	133 to 140 lm/W
CCT:	4000K, 5000K
Distribution:	Type V
Lifespan:	Up to 100,000 running hours

High Bay Linear All Purpose Series

Size: 90W-300W



*Not all product variations listed on this page are DLC qualified. Visit www.designlights.org/search to confirm qualification

Description:

The LITELUME™ High Bay Linear All Purpose (LL-HBLAP) Adjustalume Series features an all new aluminum alloy design with white powder coat finish. Featuring selectable wattage and CCT with optional plug and play design PIR motion sensor and Emergency battery backup accessory, this highbay is stocked for fast delivery. The HBLAP is designed for gymnasiums, factories and general warehouse lighting applications.

Characteristics:

Lumen Output:	12,700 to 41,500 lm
Lumens per watt (typical):	140 lm/W
CCT:	4000K, 5000K
Distribution:	HB
Lifespan:	Up to 100,000 running hours

High Bay Linear Premium

Size: 90W-420W



*Not all product variations listed on this page are DLC qualified. Visit www.designlights.org/search to confirm qualification

Description:

The LITELUME™ High Bay Linear Premium Series (LL-HBLP) features Die-casting aluminum housing to enable a sturdy structure and superior thermal performance. Compact design and innovative contractor-friendly packaging for faster installation. State of the art optical lens that meets unified glare rating. The HBLP is designed for gymnasiums, factories, high performance installations and general warehouse lighting applications.

Characteristics:

Lumen Output:	12,200 to 60,000 lm
Lumens per watt (typical):	135 to 143 lm/W
CCT:	4000K, 5000K
Distribution:	HB
Lifespan:	Up to 100,000 running hours

High Bay Linear Econolume Series

Size: 90W-370W



*Not all product variations listed on this page are DLC qualified. Visit www.designlights.org/search to confirm qualification

Description:

The LITELUME™ High Bay Linear Econolume Series (LL-HBLECO) features a 2' and 4' option aluminum alloy body with white powder coat finish. Offering maximum energy savings and high quality at an affordable price, the HBLECO is designed for gymnasiums, factories and general warehouse lighting applications.

Characteristics:

Lumen Output:	12,600 to 50,500lm
Lumens per watt (typical):	136 to 142 lm/W
CCT:	4000K, 5000K
Distribution:	HB
Lifespan:	Up to 100,000 running hours

High Bay Linear Full Body

Size: 90W-425W



Description:

The LITELUME™ Highbay Linear Full Body (LL-HBLFB) series is a group of full-body, premium-performance LED high bay luminaires. These luminaires are designed to illuminate a wide variety of settings, including commercial, industrial and retail settings such as warehouses, manufacturing plants, sporting venues and big-box retailers. With a painted, steel housing, this luminaire provides high levels of durability and performance. High-efficacy, long-life LEDs provide both energy and maintenance cost savings compared to traditional, High Intensity Discharge (HID) high bays.

Characteristics:

Lumen Output:	12,193 to 60,629 lm
Lumens per watt (typical):	140 to 142 lm/W
CCT:	4000K, 5000K
Distribution:	HB
Lifespan:	122,000 hours @ L70

High Bay Linear High Lumen

Size: 100W-500W



Description:

The LITELUME™ High Bay Linear High Lumen Series (LL-HBLHL) featuring state of the art lighting technology. A robust design utilizing high heat-conducting aviation aluminium and separate heat sink for driver and LED's isolating the drivers from the light source to reduce light loss and increase power factor for optimal performance. With 4 different sized luminaires, 7 standard wattages and custom availability, the HBLHL is a great solution for High Lumen applications, supermarkets, gymnasiums, factories, stadiums, exhibition halls and general warehouse lighting.

Characteristics:

Lumen Output:	20,000 to 100,000 lm
Lumens per watt (typical):	200 lm/W
CCT:	4000K, 5000K
Distribution:	HB
Lifespan:	Up to 100,000 running hours

*Not all product variations listed on this page are DLC qualified. Visit www.designlights.org/search to confirm qualification

High Bay Round High Temperature Series

Size: 100W-200W



Description:

The LITELUME™ High Bay Round High Temperature Series (LL-HBRHT) is specialized for high lumen and high temperature applications up to 65°C. A robust design utilizing high heat-conducting aviation aluminium with a innovative multi-channel 360° ventilated housing utilizing a natural air convection design with proprietary heat management.

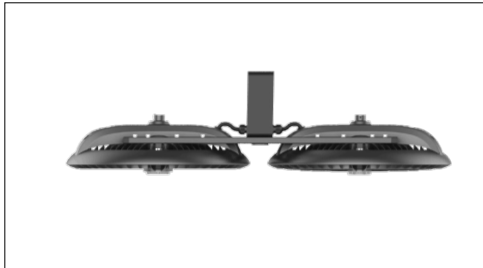
Applications include steel mills, manufacturing, warehouse and general factory.

Characteristics:

Lumen Output:	14,725 to 36,000 lm
Lumens per watt (typical):	147 to 180 lm/W
CCT:	4000K, 5000K
Distribution:	30° / 60° / 90° / 120°
Lifespan:	Featuring Meanwell HLG/HVG driver and Proprietary Light Engine with High Grade High Lumen Luxeon 5050 LEDs with 180,000+ Hours

High Bay Round Double High Temperature Series

Size: 300W-400W



Description:

The LITELUME™ High Bay Round Double High Temperature Series (LL-HBRDHT) is specialized for high lumen and high temperature applications up to 65° C. A robust design utilizing high heat-conducting aviation aluminium with a innovative multi-channel 360 degree ventilated housing utilizing a natural air convection design with proprietary heat management.

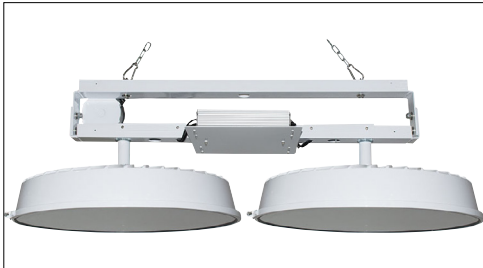
Applications include steel mills, manufacturing, warehouse and general factory.

Characteristics:

Lumen Output:	44,175 to 72,000 lm
Lumens per watt (typical):	147 to 180 lm/W
CCT:	4000K, 5000K
Distribution:	30° / 60° / 90° / 120°
Lifespan:	Featuring Meanwell HLG/HVG driver and Proprietary Light Engine with High Grade High Lumen Luxeon 5050 LEDs with 180,000+ Hours

High Bay Double Power

Size: 550W



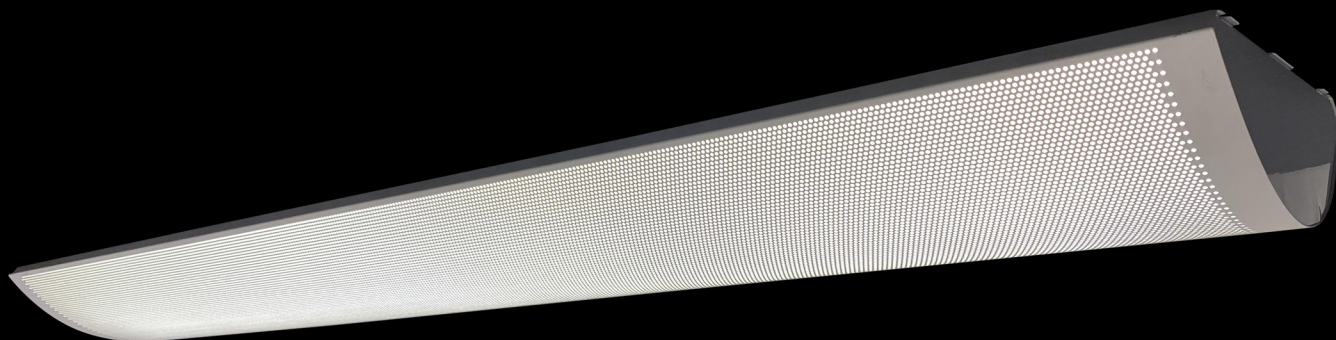
Description:

The LITELUME™ High Bay Double Power (LL-HBDP) is designed for high ceiling industrial applications up to 80 feet that require maximum delivered footcandles with low maintenance and long life. The fixture is available in wide and narrow beam optics with a choice of lenses designed to replace HID lighting systems up to 1500w MH. Typical applications are high ceiling industrial, manufacturing, military and large aircraft hangar facilities. Suitable for 40 to 80 foot mounting heights based on light level and uniformity requirements.

Characteristics:

Lumen Output:	59,342 to 67,081 lm
Lumens per watt (typical):	100 to 113 lm/W
CCT:	4000K, 5000K
Distribution:	Wide, Narrow
Lifespan:	299,000 hrs @ 25°C

LED LINEAR



Linear Half Round Architectural Dual Perforated

Size: 40W-50W



Description:

The LITELUME™ Linear Half Round Architectural Dual-Perforated (LL-LHRA-DP) brings style and performance together with a direct/indirect light distribution to commercial and retail lighting interiors. Incorporating a dual perforated design that creates soft and diffused lighting ensuring maximum visual comfort and balance. It can be installed individually or in continuous rows. An Excellent choice for grocery, library, hotels, offices, restaurants, retail and more.

Characteristics:

Lumen Output:	4,000 to 5,000 lm
Lumens per watt (typical):	100 lm/W
CCT:	3000K, 3500K, 4000K, 5000K
Lifespan:	Up to 100,000 running hours

Linear Half Round Architectural Full Perforated

Size: 60W-100W



Description:

The LITELUME™ Linear Half Round Architectural Full-Perforated (LL-LHRA-FP) brings style and performance together with a direct/indirect light distribution to commercial and retail lighting interiors. Incorporating a dual perforated design that creates soft and diffused lighting ensuring maximum visual comfort and balance. It can be installed individually or in continuous rows. An Excellent choice for grocery, library, hotels, offices, restaurants, retail and more.

Characteristics:

Lumen Output:	6,000 to 10,000 lm
Lumens per watt (typical):	100 lm/W
CCT:	3000K, 3500K, 4000K, 5000K
Lifespan:	Up to 100,000 running hours

LED TROFFER



Center Volumetric Troffer Econolume Series

Size: 20W-45W



*Not all product variations listed on this page are DLC qualified. Visit www.designlights.org/search to confirm qualification

Description:

The Litelume LED Center Volumetric Troffer (LL-CVTECO) Econolume Series is a recessed luminaire designed for retrofit or new construction. This architectural fixture adopts the latest in optical and LED technology providing an evenly pleasant volumetric illuminance. Featuring 3 level lumen output and 3 color adjustable CCT, allowing for customized energy savings and comfortability. High Power factor .90 and low THD. Controls Ready.

Characteristics:

Lumen Output:	2,500 to 5,715 lm
Lumens per watt (typical):	130 lm/W
CCT:	3500K/4000K/5000K Selectable
Lifespan:	Features SMD 2835 LED's with up to 100,000 running hours

Center Basket Volumetric Troffer Retrofit Kit

Size: 20W-45W



Description:

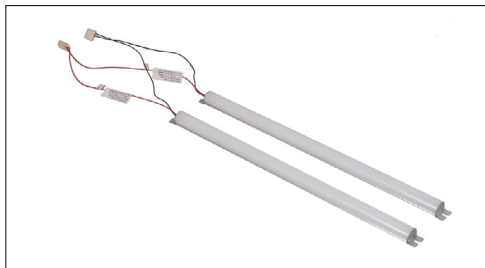
The Litelume LED Center Basket Volumetric Troffer Retrofit Kit (LL-CVTRK) is designed to transform existing 2X2, 1X4, and 2x4 fluorescent recessed luminaires into high performance LED luminaires. Delivering general ambient lighting in a variety of indoor settings, including schools, offices, hospitals and stores. This high-efficacy luminaire provides longlife and uniform illumination, as well as standard 1-10vdc dimming capability.

Characteristics:

Lumen Output:	2650 to 5490 lm
Lumens per watt (typical):	123 lm/W
CCT:	3500K/4000K/5000K Selectable
Lifespan:	122,000 hours @ 70% (L70)

Troffer Retrofit Strip

Size: 20W-90W



Description:

The Litelume Troffer Retrofit Strip (LL-TRS) is designed to transform existing fluorescent troffers or enclosures into high performance LED luminaires. Delivering general ambient lighting in a variety of indoor settings, including schools, offices, hospitals and stores. This high efficacy kit provides long-life and uniform illumination, as well as standard 0-10v DC dimming capability.

Characteristics:

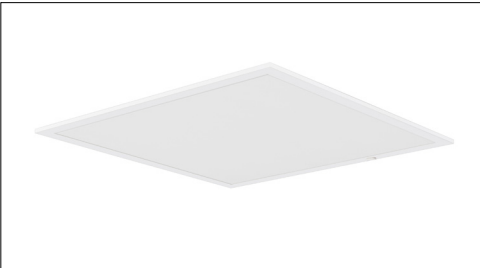
Lumen Output:	2,600 to 7,800 lm
Lumens per watt (typical):	130 lm/W
CCT:	4000K
Lifespan:	Up to 100,000 running hours

LED PANEL



Back Lit Panel Econolume Series

Size: 20W-46W



Description:

The Litelume LED Back Lit Panel (LL-BLPECO) Econolume Series is a recessed, surface or suspended mounted luminaire designed for retrofit or new construction. This architectural fixture adopts the latest in optical and LED technology providing an evenly pleasant volumetric illuminance. Featuring 3 level lumen output and 3 color adjustable CCT, allowing for customized energy savings and comfortability. High Power factor .90 and low THD.

Characteristics:

Lumen Output:	2,660 to 5,942 lm
Lumens per watt (typical):	130 lm/W
CCT:	3500K/4000K/5000K Selectable
Lifespan:	Features SMD 2835 LED's with up to 100,000 running hours



*Not all product variations listed on this page are DLC qualified. Visit www.designlights.org/search to confirm qualification

LED WRAP AROUND



Wrap Around Narrow

Size: 32W-48W



Description:

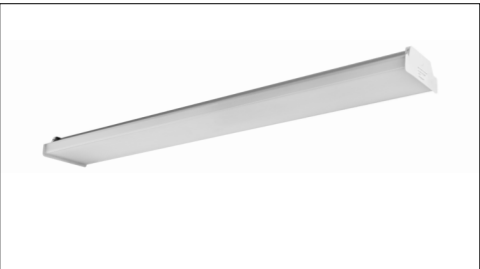
The LITELUME™ LED Wrap Around Narrow (LL-WAN) Adjustalume Series is a surface mounted luminaire designed for retrofit or new construction. Applications include offices, hallways, conference rooms, bathrooms and other low level traffic areas. Featuring 3 level lumen output and 3 color adjustable CCT, allowing for customized energy savings and comfortability. High Power factor .90 and low THD.

Characteristics:

Lumen Output:	3,936 to 5,616 lm
Lumens per watt (typical):	123 lm/W
CCT:	3500K/4000K/5000K Selectable
Lifespan:	Up to 100,000 running hours

Wrap Around Premium

Size: 30W-40W



Description:

The LITELUME™ LED Wrap Around Premium (LL-WAPR) is a ceiling mounted luminaire designed for retrofit or new construction. This fixture adopts the latest in optical and LED technology providing an evenly pleasant illuminance. Featuring 3 level lumen output and 3 color adjustable CCT, allowing for customized energy savings and comfortability. High Power factor .90 and low THD.

Characteristics:

Lumen Output:	4,110 to 5,240 lm
Lumens per watt (typical):	130 lm/W
CCT:	3500K/4000K/5000K Selectable
Lifespan:	Features SMD 2835 LED's with up to 100,000 running hours

*Not all product variations listed on this page are DLC qualified. Visit www.designlights.org/search to confirm qualification

LED VAPORTITE



Vaportite Adjustalume Series

Size: 20W-90W



Description:

The Litelume LED Vaportite (LL-VT) Adjustalume Series is a suspended or surface mounted vapor proof luminaire designed for retrofit or new construction. Applications include parking garage, stairwell lighting, car washes, food processing, commercial and industrial with applicable building and safety codes. Featuring 3 level lumen output and 3 color adjustable CCT, allowing for customized energy savings and comfortability. High Power factor .95 and low THD..

Characteristics:

Lumen Output:	2,872 to 12,364 lm
Lumens per watt (typical):	142 to 147 lm/W
CCT:	3500K/4000K/5000K Selectable
Lifespan:	Up to 100,000 running hours



LED STRIP



Strip Luminaire Adjustalume Series

Size: 15W-65W



Description:

The LITELUME™ LED Strip Luminaire (LL-SL) Adjustalume Series is a surface mounted luminaire designed for retrofit or new construction. Applications include offices, hallways, conference rooms, bathrooms and many other commercial, industrial and residential areas. Featuring 3 level lumen output and 3 color adjustable CCT, allowing for customized energy savings and comfortability. High Power factor .90 and low THD.

Characteristics:

Lumen Output:	2,285 to 9,677 lm
Lumens per watt (typical):	130 lm/W
CCT:	3500K/4000K/5000K Selectable
Lifespan:	Up to 100,000 running hours



LED DOWNLIGHT



Recessed Down Light Adjustalume Series

Size: 5W-32W



Description:

The LITELUME™ LED Recessed Adjustalume Series is a downlight luminaire designed for retrofit or new construction. The spring-action housing clamps and universal voltage allow for easy installation. Featuring 3 level lumen output and 3 color adjustable CCT, allowing for customized energy savings and comfortability.

Characteristics:

Lumen Output:	480 to 3,200 lm
Lumens per watt (typical):	96 to 100 lm/W
CCT:	3000K/3500K/4000K (Selectable)
Lifespan:	Up to 100,000 running hours

Flat Panel Kelvin Field Selectable

Size: 7W-15W



Description:

The LITELUME™ Flat Panel Kelvin Field Selectable is a downlight luminaire designed for retrofit or new construction. Featuring 5 color adjustable CCT for customized comfortability.

Characteristics:

Lumen Output:	600 to 1,000lm
Lumens per watt (typical):	66 to 86 lm/W
CCT:	2700K/3000K/3500K/4000K/5000K Selectable
Lifespan:	181,000 hours @ 70% (L70)

Module Kelvin Field Selectable

Size: 10W-14W



Description:

The LITELUME™ Module Kelvin Field Selectable is a downlight luminaire designed for retrofit or new construction. Featuring 5 color adjustable CCT for customized comfortability.

Characteristics:

Lumen Output:	700 to 1,000lm
Lumens per watt (typical):	70 to 71 lm/W
CCT:	2700K/3000K/3500K/4000K/5000K Selectable
Lifespan:	181,000 hours @ 70% (L70)

2” Cans & Trims

Size: 9W



Description:

The LITELUME™ 2” Cans and Trims is a downlight luminaire designed for retrofit or new construction.

Characteristics:

Lumen Output:	600 lm
Lumens per watt (typical):	67 lm/W
CCT:	3000K, 3500K, 4000K
Lifespan:	50,000 hours @ 70% (L70)

3.5" LED Trims

Size: 9W



Description:

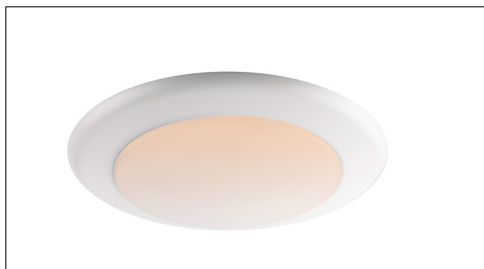
The LITELUME™ 3.5" Cans and Trims is a downlight luminaire designed for retrofit or new construction.

Characteristics:

Lumen Output:	560 lm
Lumens per watt (typical):	62 lm/W
CCT:	3000K, 4000K
Lifespan:	50,000 hours @ 70% (L70)

Downlight Disk

Size: 15W



Description:

The LITELUME™ LED Downlight Disk (LL-DLD) luminaire can be used in a wide variety of indoor applications (damp rated) for new construction or retrofit. Featuring 5 CCT's to choose from, and comes with and without PIR motion sensor. Applications include schools, hotels, office, commercial and residential use in 120v.

Characteristics:

Lumen Output:	1,218 lm
Lumens per watt (typical):	80 lm/W
CCT:	2700K/3000K/3500K/4000K/5000K Selectable
Lifespan:	50,000 hours @ 70% (L70)

6" LED Dedicated Cans



Description:

The LITELUME™ LED Dedicated Cans are designed for 6" LED trims suitable for new construction or remodel applications.

Characteristics:

Bar hangers for use with new construction models are adjustable from 13.6" to 25" and can be positioned up to 90°.

Remodel cans come standard with four torsion clips to secure housing – accommodates 0.5" and 0.6" ceilings.

Contains one 1.1" and six 0.9" knockouts and four romex pry-outs with strain relief.

4" LED Dedicated Cans



Description:

The LITELUME™ LED Dedicated Cans are designed for 4" LED trims suitable for new construction or remodel applications.

Characteristics:

Bar hangers for use with new construction models are adjustable from 13.6" to 25" and can be positioned up to 90°.

Remodel cans come standard with four torsion clips to secure housing – accommodates 0.5" and 0.6" ceilings.

Through branch wiring with maximum 6 No. AWG conductors.

3.5" LED Dedicated Cans



Description:

The LITELUME™ LED Dedicated Cans are designed for 3.5" LED trims suitable for new construction or remodel applications.

Characteristics:

Bar hangers for use with new construction models are adjustable from 13.6" to 25" and can be positioned up to 90°.

Remodel cans come standard with four torsion clips to secure housing – accommodates 0.5" and 0.6" ceilings.

Easy installation in new construction or retrofit applications. Remodel equipped with torsion springs.

DECORATIVE & RESIDENTIAL



Ceiling Modern

Size: 17W-23W



Description:

The LITELUME™ Ceiling Modern (LL-CM) luminaire incorporates special binned high CRI LED's placed for even distribution of lighting in this modern soft design. Features a die-formed cold rolled steel housing in satin nickel or oil rubbed bronze with a high transmission acrylic lens for a soft appearance. Offering 2 different sizes and wattages. Available in 3000k, high power factor and low THD.

Applications: commercial, residential, hospitality and entertainment.

Characteristics:

Lumen Output:	1,100 to 1,500 lm
Lumens per watt (typical):	65 lm/W
CCT:	3000K
Lifespan:	60,000 running hours

Ceiling Ring Light

Size: 21W-44W



Description:

The LITELUME™ Ceiling Ring Lite (LL-CRL) features a die-formed cold rolled steel housing in grey or oil rubbed bronze with a high transmission acrylic lite ring for an elegant soft appearance. Featuring 3 different sizes and wattages, and select wattage models available in a suspended mount. Available in 3000k or 4000k with optional EM battery backup and bi-level, high power factor and low THD.

Applications: hospitality and entertainment

Characteristics:

Lumen Output:	1,260 to 2,330 lm
Lumens per watt (typical):	53 to 63 lm/W
CCT:	3000K, 4000K
Lifespan:	60,000 running hours

Ceiling Round Glo

Size: 23W-35W



Description:

The LITELUME™ Ceiling Round Glo (LL-CRG) features a die-formed cold rolled steel housing in brushed aluminum, optional oil rubbed bronze with a diffused glass lens creating a uniformed soft appearance. Featuring 2 different sizes and wattages, available in ceiling or suspended mount. Available in 3000k, high power factor and low THD.

Applications: hospitality and entertainment.

Characteristics:

Lumen Output:	1,900 to 2,670lm
Lumens per watt (typical):	76 to 82 lm/W
CCT:	3000K
Lifespan:	60,000 running hours

Ceiling Now

Size: 18W-35W



Description:

The LITELUME™ Ceiling Now (LL-CN) luminaire incorporates built-in emergency lighting, sensed bi-level lighting or both in this multifunctional design. Features a die-formed cold rolled steel housing in satin nickel or oil rubbed bronze with a high transmission acrylic lens for a soft appearance. Offering 4 different sizes and wattages. Available in 3000k, high power factor and low THD. Applications: commercial, residential, hospitality and entertainment.

Characteristics:

Lumen Output:	1,430 to 3,364 lm
Lumens per watt (typical):	72 to 98 lm/W
CCT:	3000K
Lifespan:	60,000 running hours

Ceiling Lite Air

Size: 24W-35W



Description:

The LITELUME™ Ceiling Lite Air (LL-CLA) luminaire incorporates a unique cool look for a fresh design. Features a die-formed cold rolled steel housing with an inner and outer shade, high transmission acrylic lens front panel for uniformity. Offering 2 different sizes and wattages. Available in 3000k, high power factor and low THD.

Applications: commercial, residential, hospitality and entertainment.

Characteristics:

Lumen Output:	1,700 to 2,480 lm
Lumens per watt (typical):	70 lm/W
CCT:	3000K
Lifespan:	60,000 running hours

Ceiling Econolume Series

Size: 12W-32W



Description:

The LITELUME™ Ceiling Econolume Series (LL-CECO) luminaire incorporates a low profile design. Features a die-formed cold rolled steel housing in satin nickel or oil rubbed bronze with a high transmission acrylic lens for a soft appearance. Offering 4 different sizes and wattages with multiple color temperature options, high power factor and low THD. Select models come in MCT (multiple color temperature 3000k/35000k/4000k). Applications: commercial, residential, hospitality and entertainment.

Characteristics:

Lumen Output:	580 to 1,700 lm
Lumens per watt (typical):	48 to 62 lm/W
CCT:	3000K 4000K 3000K/3500K/4000K Selectable
Lifespan:	60,000 running hours

Pendant Series A

Size: 9W



Description:

The LITELUME™ Pendant Series A (LL-PSA) features a die-formed cold rolled steel housing in satin nickel or oil rubbed bronze with a opal glass shade for an elegant soft appearance.

Applications: Dining, Vanity lighting.

Characteristics:

Lumen Output:	800lm
Lumens per watt (typical):	85 lm/W
CCT:	3000K, 4000K
Lifespan:	50,000 running hours

LL-LEDUC

Size: 4W-18W



Description:

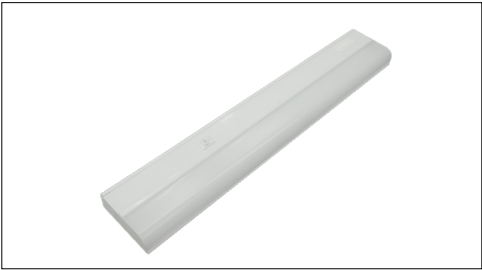
The LITELUME™ LL-LEDUC allows for easy replacement of existing Fluorescent, incandescent, halogen and xenon under cabinet lighting. Built-in driver, captive screws and knockouts for easy installation in new work or remodel applications.

Characteristics:

Lumen Output:	250 to 1,180 lm
Lumens per watt (typical):	53 to 63 lm/W
CCT:	2700K
Lifespan:	50,000 running hours

LL-UCE

Size: 5W-18W



Description:

The LITELUME™ Undercabinet Economy Kelvin Field Selectable

Characteristics:

Lumen Output:	334 to 1488 lm
Lumens per watt (typical):	67 to 83 lm/W
CCT:	2700K/3000K/3500K/4000K/5000K Selectable
Lifespan:	up to 196,000 hours @ 70% (L70)

Sconce Block Mood

Size: 10W



Description:

The LITELUME™ Sconce Block Mood (LL-SBM) luminaire incorporates a simple fresh small form factor design. Features a die-formed cold rolled steel housing in black, with availability to special order in satin nickel, oil rubbed bronze or custom colors with a crystal glass lens. Offering a standard 10w model in 3000k or 4000k, high power factor and low THD.

Applications: commercial, residential, hospitality and entertainment.

Characteristics:

Lumen Output:	650 lm
Lumens per watt (typical):	65 lm/W
CCT:	3000K, 4000K
Lifespan:	60,000 running hours

Sconce Wall Facade

Size: 15W



Description:

The LITELUME™ Sconce Wall Facade (LL-SWF) luminaire incorporates a traditional fresh design. Features a die-formed cold rolled steel housing in oil rubbed bronze with frosted glass lens for a subtle approach. Offering a standard model, and built-in emergency light model in 3000k, high power factor and low THD.

Applications: commercial, residential, hospitality and entertainment.

Characteristics:

Lumen Output:	1,250 lm
Lumens per watt (typical):	83 lm/W
CCT:	3000K
Lifespan:	60,000 running hours

Sconce Marina Jar

Size: 12W



Description:

The LITELUME™ Sconce Marina Jar (LL-SMJ) luminaire incorporates semi marina look with a fresh jar design. Features a die-formed cold rolled steel housing in black, with availability to special order in satin nickel, oil rubbed bronze or custom colors with a glass lens. Offering a standard 12W model in 3000k, high power factor and low THD.

Applications: commercial, residential, hospitality and entertainment.

Characteristics:

Lumen Output:	1,148 lm
Lumens per watt (typical):	96 lm/W
CCT:	3000K
Lifespan:	60,000 running hours

Sconce Thin Flat

Size: 15W



Description:

The LITELUME™ Sconce Thin Flat (LL-STF) luminaire incorporates a thin flat design. Features a die-formed cold rolled steel housing in satin nickel, optional oil rubbed bronze, with a high transmission acrylic lens. Offering a standard model in MCT (multiple color temperature 3000k/35000k/4000k), high power factor and low THD.

Applications: commercial, residential, hospitality and entertainment.

Characteristics:

Lumen Output:	1,300 lm
Lumens per watt (typical):	87 lm/W
CCT:	MCT 3000K/3500K/4000K Selectable
Lifespan:	60,000 running hours

Sconce Super Low

Size: 18W



Description:

The LITELUME™ Sconce Super Low (LL-SSL) luminaire incorporates a super low profile fresh design. Features a die-formed cold rolled steel housing in brushed aluminum or optional oil rubbed bronze with a high transmission acrylic lens for even distribution. Offering a standard model in MCT (multiple color temperature 3000k/35000k/4000k), high power factor and low THD.

Applications: commercial, residential, hospitality and entertainment.

Characteristics:

Lumen Output:	1,100 lm
Lumens per watt (typical):	61 lm/W
CCT:	MCT 3000K/3500K/4000K Selectable
Lifespan:	60,000 running hours

Sconce Prosper Elite

Size: 15W



Description:

The LITELUME™ Sconce Prosper Elite (LL-SPE) luminaire incorporates a low profile fresh design. Features a die-formed cold rolled steel housing in satin nickel or oil rubbed bronze with a high transmission glass lens for even distribution. Offering a standard model, and builtin emergency light model in 3000k, high power factor and low THD.

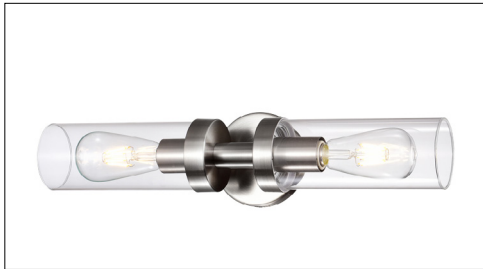
Applications: commercial, residential, hospitality and entertainment.

Characteristics:

Lumen Output:	700 lm
Lumens per watt (typical):	47 lm/W
CCT:	3000K
Lifespan:	60,000 running hours

Vanity Simple Mini

Size: 16W



Description:

The LITELUME™ Vanity Simple Mini (LL-VSM) features a die-formed cold rolled steel housing in satin nickel or oil rubbed bronze for a very simple look and small form factor. Featuring 2x8W bulbs in 2700k, high power factor and low THD.

Applications: Hallways, Vanity lighting.

Characteristics:

Lumen Output:	1,280 lm
Lumens per watt (typical):	80 lm/W
CCT:	2700K
Lifespan:	60,000 running hours

Vanity Elite Premium

Size: 24W



Description:

The LITELUME™ Vanity Elite Premium (LL-VEP) features a die-formed cold rolled steel housing in satin nickel or oil rubbed bronze with a high transmission acrylic shade for an elegant soft appearance.

Applications: Hallways, Vanity lighting

Characteristics:

Lumen Output:	1,980 lm
Lumens per watt (typical):	82.5 lm/W
CCT:	3000K
Lifespan:	60,000 running hours

Vanity Modern Open

Size: 15W-32W



Description:

The LITELUME™ Vanity Modern Open (LL-VMO) features a dieformed cold rolled steel housing in satin nickel or oil rubbed bronze with a high transmission acrylic shade for an elegant soft appearance.

Applications: Hallways, Vanity lighting

Characteristics:

Lumen Output:	1,100 to 3,000 lm
Lumens per watt (typical):	100 lm/W
CCT:	3000K, 3500K,4000K
Lifespan:	60,000 running hours

Vanity Marina Series

Size: 8W-24W



Description:

The LITELUME™ Vanity Marina Series (LL-VM1, VM2 and VM3) features a die-formed cold rolled steel housing with dark bronze & antique brass finish for a semi vintage marina look. Featuring 1, 2 or 3x8W bulbs in 2700k, high power factor and low THD.

Applications: Hallways, Vanity lighting

Characteristics:

Lumen Output:	640 to 1,920 lm
Lumens per watt (typical):	80 lm/W
CCT:	2700K
Lifespan:	60,000 running hours

Vanity Box Antique

Size: 16W



Description:

The LITELUME™ Vanity Box Antique (LL-VBA) features a die-formed cold rolled steel housing with a metal lens for a semi rustic look. Featuring 2x8W T10L bulbs in 2700k, high power factor and low THD.

Applications: Hallway and Vanity lighting.

Characteristics:

Lumen Output:	1,600 lm
Lumens per watt (typical):	100 lm/W
CCT:	2700K
Lifespan:	60,000 running hours

Vanity Vintage 3 Series

Size: 24W



Description:

The LITELUME™ Vanity Vintage 3 Series (LL-VV3) features a dieformed cold rolled steel housing in oil rubbed bronze for a vintage look. Featuring 3 x 8w bulbs in 2700k, high power factor and low THD.

Applications: Vanity lighting.

Characteristics:

Lumen Output:	2,600 lm
Lumens per watt (typical):	100 lm/W
CCT:	2700K
Lifespan:	60,000 running hours

Vanity Eve Series

Size: 9W-27W



Description:

The LITELUME™ Vanity Eve Series (LL-VE1, VE2 and VE3) features a die-formed cold rolled steel housing in oil rubbed bronze for an easy going look. Featuring 1, 2 or 3 x 9W bulbs in 3000k or 4000k, high power factor and low THD.

Applications: Hallways, Vanity lighting.

Characteristics:

Lumen Output:	800 to 2,400 lm
Lumens per watt (typical):	89 lm/W
CCT:	3000K, 4000K
Lifespan:	60,000 running hours

Vanity Opal Series

Size: 9W-27W



Description:

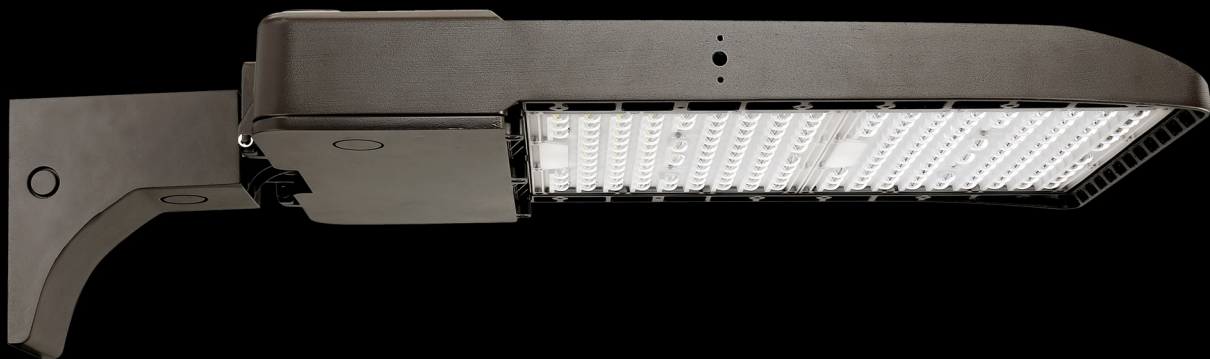
The LITELUME™ Vanity Opal (LL-VO1, VO2 and VO3) features a dieformed cold rolled steel housing in satin nickel or oil rubbed bronze with an opal glass lens and secondary clear glass shade for an elegant soft appearance. Featuring 1, 2 or 3 x 9W bulbs in 3000k or 4000k, high power factor and low THD.

Applications: Hallways, Vanity lighting.

Characteristics:

Lumen Output:	800 to 2,400 lm
Lumens per watt (typical):	89 lm/W
CCT:	3000K, 4000K
Lifespan:	60,000 running hours

LED AREA LIGHT



Area Light All Purpose Adjustalume Series

Size: 45W-145W



*Not all product variations listed on this page are DLC qualified. Visit www.designlights.org/search to confirm qualification

Description:

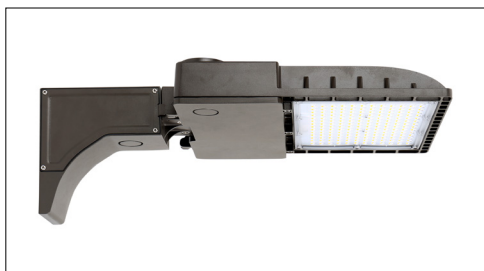
The LITELUME™ Area Light All Purpose (LL-ALAP) Adjustalume Series features an all new one piece extruded aluminum design with outstanding corrosion protection, and secondary UV resistant polycarbonate optics. Compact, low profile, IK08 and 3G vibration rated. The ALAP provides an aesthetically pleasing addition to any application with its steady well defined construction.

Characteristics:

Lumen Output:	6,300 to 20,300 lm
Lumens per watt (typical):	140 lm/W
CCT:	3000K/4000K/5000K Selectable
Distribution:	Type III
Lifespan:	Features 3030 LED's with up to 100,000 running hours

Area Light Econolume Series Luminaire

Size: 40W-300W



*Not all product variations listed on this page are DLC qualified. Visit www.designlights.org/search to confirm qualification

Description:

The LITELUME™ Area Light Econolume Series Luminaire (LL-ALECO) combines style, performance and competitiveness. Featuring a diecast aluminum housing with outstanding corrosion protection, and secondary UV resistant polycarbonate optics. Compact in design low profile 3G vibration rated. The ALECO provides an aesthetically pleasing addition to any roadway or parking lot with its steady welldefined construction. The highly functioning optics provide maximum lumen output and light distribution to make the ALECO the premier outdoor area light.

Characteristics:

Lumen Output:	5,360 to 42,000 lm
Lumens per watt (typical):	128 to 141 lm/W
CCT:	4000K, 5000K
Distribution:	Type III, Type IV, Type V
Lifespan:	up to 100,000 running hours

Area Light High Power

Size: 150W-350W



*Not all product variations listed on this page are DLC qualified. Visit www.designlights.org/search to confirm qualification

Description:

The LITELUME™ Area Light High Power Series (LL-ALHP) combines style and performance. Featuring a diecast aluminum housing with outstanding corrosion protection, and secondary UV resistant polycarbonate optics. Compact in design low profile 3G vibration rated. The ALHP provides an aesthetically pleasing addition to any roadway or parking lot with its steady well defined construction. The highly functioning optics provide maximum lumen output and light distribution to make the ALHP the premier outdoor area light.

Characteristics:

Lumen Output:	21,200 - 51,100 lm
Lumens per watt (typical):	146 lm/W
CCT:	4000K,5000K
Distribution:	Type III, Type IV, Type V
Lifespan:	Features Inventronics Driver & OSRAM 5050 LED's with up to 100,000 running hours

Area Light Slim Series

Size: 40W-300W



*Not all product variations listed on this page are DLC qualified. Visit www.designlights.org/search to confirm qualification

Description:

The LITELUME™ Area Light Slim Series Luminaire (LL-ALSL) combines style, performance and competitiveness. Featuring a rugged one piece diecast aluminum housing with outstanding corrosion protection, and secondary UV resistant polycarbonate optics. Compact in design low profile 3G vibration rated. Wattage and CCT Selectable with many accessories to customize. The ALSL provides an aesthetically pleasing addition to any roadway or parking lot with its steady well defined construction. The highly functioning optics provide maximum lumen output and light distribution to make the ALSL the premier outdoor area light.

Characteristics:

Lumen Output:	10,600 to 45,000 lm
Lumens per watt (typical):	150 to180 lm/W
CCT:	3000K, 4000K, 5000K
Distribution:	Type II, Type III, Type IV,Type V
Lifespan:	Features premium LED's with up to 100,000 running hours

LED ROADWAY



Roadway

Size: 70W-150W



Description:

The LITELUME™ Roadway (LL-RW) Draws attention with a heavy duty die-cast aluminum housing, outstanding corrosion protection, uncompromising optical performance and un-matched versatility for a wide variety of area and roadway applications. Featuring a single latch tool-less entry, terminal block power set up, industry leading surge protection options, superior lumen maintenance with a robust yet economical design.

Applications: Roadways, Multi-family, Community and general site illumination.

Characteristics:

Lumen Output:	9,600 to 20,000 lm
Lumens per watt (typical):	135 to 141 lm/W
CCT:	3000K, 4000K, 5000K
Distribution:	T2, T3
Lifespan:	Up to 100,000 running hours

Dusk to Dawn Low Power

Size: 27W-40W



Description:

The LITELUME™ Dusk to Dawn Low Power (LL-DDLP) is a multipurpose luminaire delivering ultra efficient lighting. Featuring an easy maintenance door for tool-less entry, light weight design, and 3G vibration rated construction. Applications: Roadways, Yards, Loading Docks, Multi-family, Community and general site illumination.

Characteristics:

Lumen Output:	3,780 to 5,600 lm
Lumens per watt (typical):	139 to 141 lm/W
CCT:	4000K, 5000K
Distribution:	T5
Lifespan:	Up to 100,000 running hours

Dusk to Dawn High Power

Size: 45W-90W



Description:

The LITELUME™ Dusk to Dawn High Power (LL-DDHP) is a multipurpose luminaire delivering ultra efficient lighting. Featuring an easy maintenance door for tool-less entry, light weight design, and 3G vibration rated construction.

Applications: Roadways, Yards, Loading Docks, Multi-family, Community and general site illumination.

Characteristics:

Lumen Output:	6,150 to 12,200 lm
Lumens per watt (typical):	133 to 138 lm/W
CCT:	4000K, 5000K
Distribution:	T5
Lifespan:	Up to 100,000 running hours



LED FLOOD LIGHT



Floodlight Small Size

Size: 15W-27W



*Not all product variations listed on this page are DLC qualified. Visit www.designlights.org/search to confirm qualification

Description:

The LITELUME™ Floodlight (LL-FL) small size is a high performance LED solution designed with versatility and a slim, low profile design. The rugged, die-cast aluminum housing with UV resistant powdercoat finish minimizes wind load requirements and features an integral, watertight LED driver compartment along with high performance aluminum heat sinks.

Applications: Parking lots, Auto dealerships, Billboard, Façade, Wall Washing, Landscape, and general outdoor lighting.

Characteristics:

Lumen Output:	1,950 to 3,600 lm
Lumens per watt (typical):	121 to 127 lm/W
CCT:	3000K, 4000K, 5000K
Beam Angle:	7H*6V
Lifespan:	Up to 100,000 running hours

Floodlight Medium Size

Size: 45W-60W



*Not all product variations listed on this page are DLC qualified. Visit www.designlights.org/search to confirm qualification

Description:

The LITELUME™ Floodlight (LL-FL) medium size is a high performance LED solution designed with versatility and a slim, low profile design. The rugged, die-cast aluminum housing with UV resistant powdercoat finish minimizes wind load requirements and features an integral, watertight LED driver compartment along with high performance aluminum heat sinks.

Applications: Parking lots, Auto dealerships, Billboard, Façade, Wall Washing, Landscape, and general outdoor lighting.

Characteristics:

Lumen Output:	5,650 to 7,250lm
Lumens per watt (typical):	130 to 133 lm/W
CCT:	3000K, 4000K, 5000K
Beam Angle:	7H*6V
Lifespan:	Up to 100,000 running hours

Floodlight Large Size

Size: 70W-100W



*Not all product variations listed on this page are DLC qualified. Visit www.designlights.org/search to confirm qualification

Description:

The LITELUME™ Floodlight (LL-FL) large size is a high performance LED solution designed with versatility and a slim, low profile design. The rugged, die-cast aluminum housing with UV resistant powdercoat finish minimizes wind load requirements and features an integral, watertight LED driver compartment along with high performance aluminum heat sinks.

Applications: Parking lots, Auto dealerships, Billboard, Façade, Wall Washing, Landscape, and general outdoor lighting.

Characteristics:

Lumen Output:	8,700 to 13,300 lm
Lumens per watt (typical):	124 to 133 lm/W
CCT:	3000K, 4000K, 5000K
Beam Angle:	7H*6V
Lifespan:	Up to 100,000 running hours

Floodlight Extra Large Size

Size: 135W-200W



*Not all product variations listed on this page are DLC qualified. Visit www.designlights.org/search to confirm qualification

Description:

The LITELUME™ Floodlight (LL-FL) extra large size is a high performance LED solution designed with versatility and a slim, low profile design. The rugged, die-cast aluminum housing with UV resistant powdercoat finish minimizes wind load requirements and features an integral, watertight LED driver compartment along with high performance aluminum heat sinks.

Applications: Parking lots, Auto dealerships, Billboard, Façade, Wall Washing, Landscape, and general outdoor lighting.

Characteristics:

Lumen Output:	17,100 to 25,600 lm
Lumens per watt (typical):	123 to 130 lm/W
CCT:	3000K, 4000K, 5000K
Beam Angle:	7H*6V
Lifespan:	Up to 100,000 running hours

Floodlight Extra Large Double Size

Size: 350W



Description:

The LITELUME™ Floodlight (LL-FL) extra large double size is a high performance LED solution designed with versatility and a slim, low profile design. The rugged, die-cast aluminum housing with UV resistant powdercoat finish minimizes wind load requirements and features an integral, watertight LED driver compartment along with high performance aluminum heat sinks.

Applications: Parking lots, Auto dealerships, Billboard, Façade, Wall Washing, Landscape, and general outdoor lighting.

Characteristics:

Lumen Output:	48,000 to 50,000 lm
Lumens per watt (typical):	137 to 142 lm/W
CCT:	3000K, 4000K, 5000K
Beam Angle:	7H*6V Optional 4H*4V
Lifespan:	Up to 100,000 running hours

Floodlight Small

Size: 15W-42W



Description:

The LITELUME™ Floodlight Small (LL-FLS) features a rugged, die-cast aluminum housing with a UV resistant powdercoat finish.

Applications: Billboard, Façade, Wall Washing and Landscape outdoor lighting.

Characteristics:

Lumen Output:	1,373 to 5,400 lm
Lumens per watt (typical):	94 to 100 lm/W
CCT:	4000K, 5000K
Beam Angle:	130°
Lifespan:	Up to 100,000 running hours

*Not all product variations listed on this page are DLC qualified. Visit www.designlights.org/search to confirm qualification

Floodlight Medium

Size: 65W-105W



*Not all product variations listed on this page are DLC qualified. Visit www.designlights.org/search to confirm qualification

Description:

The LITELUME™ Floodlight Medium (LL-FLM) features a rugged, diecast aluminum housing with a UV resistant powdercoat finish.

Applications: Billboard, Façade, Wall Washing and Landscape outdoor lighting.

Characteristics:

Lumen Output:	8,821 to 12,500 lm
Lumens per watt (typical):	94 to 100 lm/W
CCT:	4000K, 5000K
Beam Angle:	107°
Lifespan:	Up to 100,000 running hours

Floodlight All Purpose

Size: 10W-120W



Description:

The LITELUME™ Floodlight All Purpose (LL-FLAP) is a high performance LED luminaire designed with versatility, economy and flexibility. The rugged, die-cast aluminum housing with UV resistant powder coat finish comes in 3 wattage/size packages, includes photocell & cap with multiple mounting options stocked and ready to ship.

Applications: Parking lots, Auto dealerships, Billboard, Façade, Wall Washing, Landscape, and general outdoor lighting.

Characteristics:

Lumen Output:	1,600 to 18,000 lm
Lumens per watt (typical):	150 to 160 lm/W
CCT:	3000K, 4000K, 5000K
Beam Angle:	7H*7V
Lifespan:	Up to 100,000 running hours

LED POST TOP



Post Top Flat Round Luminaire

Size: 30W-150W



*Not all product variations listed on this page are DLC qualified. Visit www.designlights.org/search to confirm qualification

Description:

The LITELUME™ Post Top Flat Round Luminaire (LL-PTFR) combines style, performance and adjustability, with all of the optional accessories needed for site lighting. Featuring a die-cast aluminum housing with outstanding corrosion protection, and secondary UV resistant polycarbonate optics. The PTFR provides an aesthetically pleasing addition to any walkway, park, downtown corridor or parking lot with its steady well-defined construction. The highly functioning optics and adjustability provide maximum distribution to make the PTFR a premier choice for outdoor area lighting.

Characteristics:

Lumen Output:	4,200 to 21,000 lm
Lumens per watt (typical):	140 lm/W
CCT:	3000K, 4000K, 5000K
Distribution:	Type V
Lifespan:	Features 2835 SMD with up to 74,000 running hours.

Post Top Luminaire

Size: 45W-130W



*Not all product variations listed on this page are DLC qualified. Visit www.designlights.org/search to confirm qualification

Description:

The LITELUME™ Area Light Post Top Luminaire (LL-PTL) combines beauty and performance with it's fresh urban style. Featuring a die-cast aluminum housing with outstanding corrosion protection. Compact in design low profile dark sky rated with soft light. Suitable for mounting heights of 8-20' makes this aesthetically pleasing an excellent choice for pathway, walkway, municipality and general lighting applications.

Characteristics:

Lumen Output:	5,400 to 15,800 lm
Lumens per watt (typical):	120 to 122 lm/W
CCT:	3000K, 4000K, 5000K
Distribution:	Type V
Lifespan:	Up to 100,000 running hours

Post Top Round Premium

Size: 45W-150W



Description:

The Post Top Round Premium (LL-PTRP) combines style and performance with its seamless appearance. Featuring a die-cast aluminum housing with outstanding corrosion protection. Round and smooth in design with soft light. Suitable for mounting heights of 8-25' makes this an excellent choice for pathway, walkway, municipality and general lighting applications.

Characteristics:

Lumen Output:	6500 to 19500 lm
Lumens per watt (typical):	130 lm/W
CCT:	3000K/4000K/5000K Selectable
Distribution:	Type V
Lifespan:	Up to 100,000 running hours

Post Top Area Light Small

Size: 20W-35W



Description:

The LITELUME™ Post Top Area Light Small Luminaire (LL-PTALS) combines style with performance. Featuring a die-cast aluminum housing with outstanding corrosion protection, and secondary UV resistant polycarbonate optics. The PTALS provides an aesthetically pleasing addition to any walkway, park, downtown corridor or parking lot with its steady well-defined construction. The highly functioning optics provide maximum distribution to make the PTALS a premier choice for outdoor area lighting.

Characteristics:

Lumen Output:	2,543 to 4,830 lm
Lumens per watt (typical):	127 to 138 lm/W
CCT:	3000K, 4000K, 5000K
Distribution:	Type V
Lifespan:	Up to 100,000 running hours

*Not all product variations listed on this page are DLC qualified. Visit www.designlights.org/search to confirm qualification

Post Top Area Light Medium

Size: 50W-100W



*Not all product variations listed on this page are DLC qualified. Visit www.designlights.org/search to confirm qualification

Description:

The LITELUME™ Post Top Area Light Medium Luminaire (LL-PTALM) combines style with performance. Featuring a die-cast aluminum housing with outstanding corrosion protection, and secondary UV resistant polycarbonate optics. The PTALM provides an aesthetically pleasing addition to any walkway, park, downtown corridor or parking lot with its steady well-defined construction. The highly functioning optics provide maximum distribution to make the PTALM a premier choice for outdoor area lighting.

Characteristics:

Lumen Output:	6,358 to 13,800 lm
Lumens per watt (typical):	127 to 138 lm/W
CCT:	3000K, 4000K, 5000K
Distribution:	Type V
Lifespan:	Up to 100,000 running hours

Post Top Area Light Large

Size: 50W-300W



*Not all product variations listed on this page are DLC qualified. Visit www.designlights.org/search to confirm qualification

Description:

The LITELUME™ Post Top Area Light large Luminaire (LL-PTALL) combines style with performance. Featuring a die-cast aluminum housing with outstanding corrosion protection, and secondary UV resistant polycarbonate optics. The PTALL provides an aesthetically pleasing addition to any walkway, park, downtown corridor or parking lot with its steady well-defined construction. The highly functioning optics provide maximum distribution to make the PTALL a premier choice for outdoor area lighting.

Characteristics:

Lumen Output:	6,500 to 39,000 lm
Lumens per watt (typical):	130 lm/W
CCT:	3000K, 4000K, 5000K
Distribution:	Type V
Lifespan:	Up to 100,000 running hours

Post Top Acorn

Size: 40W-80W



Description:

The LITELUME™ LED Post Top Acorn (LL-PTA) features an anticorrosion, electrostatic polyester powder coated heavy duty die-cast aluminum housing for long-lasting durability. Glare free polycarbonate lens, radiator heat-releasing design and beautiful finished look makes this post top luminaire an excellent choice. Applications: Municipality, Pathway, Perimeter, Pedestrian and Walkway lighting.

Characteristics:

Lumen Output:	5,600 to 9,600 lm
Lumens per watt (typical):	120 to 140 lm/W
CCT:	3000K, 4000K, 5000K
Distribution:	T5
Lifespan:	Up to 100,000 running hours

Post Top Lantern Small

Size: 15W-42W



Description:

The LITELUME™ LED Post Top Lantern Small (LL-PTLS) features a polyester powder coated die-cast aluminum housing for long-lasting durability. Glare free polycarbonate lens, smooth design and beautiful finished look makes this post top luminaire an excellent choice.

Applications: Municipality, Pathway, Perimeter, Pedestrian and Walkway lighting.

Characteristics:

Lumen Output:	3,600 to 11,000 lm
Lumens per watt (typical):	108 to 125 lm/W
CCT:	3000K, 4000K, 5000K
Distribution:	T5
Lifespan:	Up to 100,000 running hours

Architectural Enclosed Post Top Small

Size: 37W-84W



Description:

The Architectural Enclosed Post Top Small (LL-AEPTS) is available in a Type V distribution with two lens options designed to replace HID lighting systems up to 250w MH or HPS. The fixture mounts to a pole top tenon. Typical area lighting applications include parking areas, walkways, and street lighting applications. Mounting heights of 12 to 20 feet can be used based on light level and uniformity requirements.

Characteristics:

Lumen Output:	2,856 to 6,921 lm
Lumens per watt (typical):	63 to 81 lm/W
CCT:	3000K, 4000K, 5000K
Distribution:	Type V
Lifespan:	473,000 hrs @ 25°C

Architectural Open Square Post Top Large

Size: 100W-276W



Description:

The Architectural Open Square Large Post Top (LL-AOSLPT) is available in Type III or V distributions with two lens options designed to replace HID lighting systems up to 1000w MH or HPS. The fixture mounts to a pole top tenon. Typical area lighting applications include parking areas, walkways, and street lighting applications. Mounting heights of 12 to 30 feet can be used based on light level and uniformity requirements.

Characteristics:

Lumen Output:	7,363 to 32,892 lm
Lumens per watt (typical):	73 to 119 lm/W
CCT:	3000K, 4000K, 5000K
Distribution:	Type III, Type V
Lifespan:	362,000 hrs @25°C

LED BOLLARD



Round and Square Bollards Lumen and Kelvin Field Selectable



*Not all product variations listed on this page are DLC qualified. Visit www.designlights.org/search to confirm qualification

Description:

Description
The LITELUME™ Round and Square Bollards -Lumen and Kelvin Field Selectable (LL-BOL) features an anti-corrosion die-cast aluminum housing and high-impact polycarbonate lens. Parabolic cone with even 360 degree distribution. Easy installation for new construction and retrofit applications.
Applications: Security, Pathway, Perimeter, Pedestrian and Walkway lighting.

Characteristics:

Lumen Output:	905 to 3,296 lm
Lumens per watt (typical):	69 to 148 lm/W
CCT:	3000K/4000K /5000K Selectable
Lifespan:	Up to 163,000 hours @ 70% (L70)

Bollard Luminaire 360

Size: 10W-26W



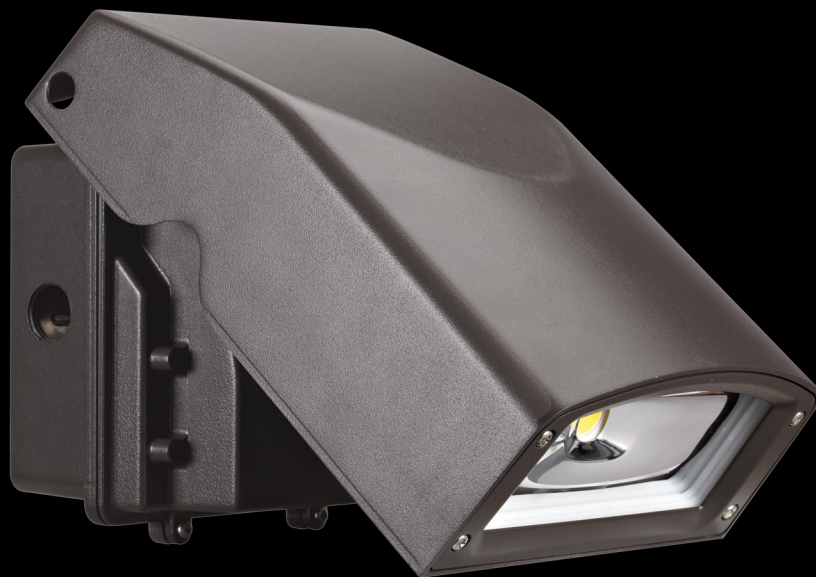
Description:

The LITELUME™ Bollard Luminaire 360 (LL-BL360) is a subtle luminaire with a high efficacy soft lens allowing zero uplight. 360 degree illumination with a Robust Ground Cage pre-buried installation. Applications: Security, Pathway, Perimeter, Pedestrian and Walkway lighting.

Characteristics:

Lumen Output:	1,300 to 3,200 lm
Lumens per watt (typical):	115 to 140 lm/W
CCT:	3000K, 4000K, 5000K
Distribution:	T5 120D
Lifespan:	Up to 100,000 running hours

LED WALL PACK



Wall Mount Luminaire

Size: 27W-100W



Description:

The LITELUME™ Wallmount luminaire (LL-WML) features a rugged die-cast aluminum housing with advanced thermal management. A UV resistant type 3 secondary optic with high performing LED's. Plug and Play Microwave Motion Sensor and Photocell ready, suitable for commercial applications. Applications: Auto Dealerships, Hotels, Grocery, Retail, warehouse, Over Door and general building illumination.

Characteristics:

Lumen Output:	3,330 to 13,300 lm
Lumens per watt (typical):	123 to 130 lm/W
CCT:	3000K, 4000K, 5000K
Distribution:	Forward Throw
Lifespan:	Up to 100,000 running hours

Small Pack

Size: 22W



Description:

The LITELUME™ LED Small Pack (LL-SMPK) is a new compact luminaire utilizing the latest generation of LED chips and a patented smart controller, this uniquely designed wall pack replaces traditional fixtures 70W - 250W metal halide, and also has multiple CCT to choose from based on different environments. Housing is made out of a die-cast aluminum with reliable powder coating specifically for a harsh outdoor environment. It is attractive in appearance and performance.

Characteristics:

Lumen Output:	3,000 lm
Lumens per watt (typical):	136 lm/W
CCT:	3000K/4000K/5000K Selectable
Distribution:	T5
Lifespan:	Up to 100,000 running hours

Wall Pack Quarter Sphere

Size: 15W-72W



Description:

The LITELUME™ Wall Pack Quarter Sphere (LL-WPQS) provides multiple wattages of down light. Featuring high performance LEDs and a long lasting driver, this fixture provides effective lighting all around. It can be used around retail malls, restaurants, dealerships, shopping centers, and hospitality.

Characteristics:

Lumen Output:	1,800 to 8,640 lm
Lumens per watt (typical):	63 to 81 lm/W
CCT:	3000K, 4000K, 5000K



Wall Pack Half Round Up/Down

Size: 40W



Description:

The LITELUME™ Wall Pack Half Round Up/Down (LL-WPHRUD) is elegant as it is functional. Providing 40W of total light up and down. Featuring high performance LEDs and a long lasting driver, this fixture provides effective lighting all around. It can be used around retail malls, restaurants, dealerships, shopping centers, and hospitality.

Characteristics:

Lumen Output:	6,056 lm
Lumens per watt (typical):	151 lm/W
CCT:	3000K, 4000K, 5000K



Wall Pack Half Round

Size: 15W-72W



Description:

The LITELUME™ Wall Pack Half Round (LL-WPHR) provides multiple wattages of down light. Featuring high performance LEDs and a long lasting driver, this fixture provides effective lighting all around. It can be used around retail malls, restaurants, dealerships, shopping centers, and hospitality.

Characteristics:

Lumen Output:	1,800 to 8,640 lm
Lumens per watt (typical):	120 lm/W
CCT:	3000K, 4000K, 5000K

Door Pack

Size: 15W-25W



Description:

The LITELUME™ LED Door Pack (LL-DP) features a heavy-duty diecast construction and polycarbonate optical lens with UV stabilizers. Compact in design and symmetry making this luminaire ideal for office buildings, apartments, townhomes, storage facilities, man doors and a broad spectrum of overall multi-family, service and industrial applications.

Characteristics:

Lumen Output:	1,900 to 2,600 lm
Lumens per watt (typical):	102 to 126 lm/W
CCT:	4000K, 5000K
Lifespan:	Up to 100,000 running hours

*Not all product variations listed on this page are DLC qualified. Visit www.designlights.org/search to confirm qualification

Wallpack Medium Full Cutoff

Size: 12W-30W



*Not all product variations listed on this page are DLC qualified. Visit www.designlights.org/search to confirm qualification

Description:

The LITELUME™ Wallpack Medium – Full Cutoff (LL-WPMFC) is a Dark Sky compliant LED fixture with a durable polycarbonate optical lens.

Applications: Entryways, Pathway, Perimeter and Security lighting.

Characteristics:

Lumen Output:	1,675 to 3,779 lm
Lumens per watt (typical):	132 to 142 lm/W
CCT:	3000K/4000K/5000K Selectable
Distribution:	Wide
Lifespan:	Up to 100,000 running hours

Wallpack Large Full Cutoff

Size: 28W-120W



*Not all product variations listed on this page are DLC qualified. Visit www.designlights.org/search to confirm qualification

Description:

The LITELUME™ Wallpack Large – Full Cutoff (LL-WPMFC) is a Dark Sky compliant LED fixture with a durable polycarbonate optical lens.

Applications: Entryways, Pathway, Perimeter and Security lighting.

Characteristics:

Lumen Output:	5,211 to 17,148 lm
Lumens per watt (typical):	160 to 170 lm/W
CCT:	3000K/4000K/5000K Selectable
Distribution:	Forward Throw
Lifespan:	Up to 100,000 running hours

Wall Pack Slim Series

Size: 17W-135W



Description:

The LITELUME™ Wall Pack Slim (LL-WPSL) is a full cutoff LED lighting fixture boasting excellent lumens per watt, uniformity and lumen maintenance. A stylish design, multiple power and CCT configurations make this the premier wall pack of the future.

Applications: Entryways, Pathway, Perimeter and Security lighting.

Characteristics:

Lumen Output:	2,800 to 20,000 lm
Lumens per watt (typical):	148 to 154 lm/W
CCT:	3000K, 4000K, 5000K
Lifespan:	Up to 100,000 running hours

Wallpack-Adjustable

Size: 20W-80W



Description:

The LITELUME™ Wallpack (LL-WPA) is a full cutoff LED lighting fixture that features a durable, die-cast aluminum profile and 20° head tilt. Applications: Garages, Hallways, Perimeter lighting and Walkways.

Characteristics:

Lumen Output:	2,522 to 10,500 lm
Lumens per watt (typical):	126 to 135 lm/W
CCT:	4000K, 5000K
Distribution:	Type III
Lifespan:	Up to 100,000 running hours

*Not all product variations listed on this page are DLC qualified. Visit www.designlights.org/search to confirm qualification

Wall Mounted Cylinder Downlight

Size: 9W-18W



Description:

The LITELUME™ Wall Mounted Cylinder Downlight (LL-WMCD) features a die-cast aluminum housing with a powder coated finish. This fixture features High Power Factor, and low THD. Universal voltage, multiple lumen package and size allows for use in residential and commercial applications. Applications: Security, Pathway, Accent, Hallway and Walkway lighting.

Characteristics:

Lumen Output:	750 to 1,600 lm
Lumens per watt (typical):	83 to 88 lm/W
CCT:	3000K, 4000K
Lifespan:	50,000 running hours

Wall Mounted Cylinder Uplight Downlight

Size: 9W-18W



Description:

The LITELUME™ Wall Mounted Cylinder Uplight Downlight (LL-WMCUD) features a die-cast aluminum housing with a powder coated finish. This fixture features High Power Factor, and low THD. Universal voltage, multiple lumen package and size allows for use in residential and commercial applications. Applications: Security, Pathway, Accent, Hallway and Walkway lighting.

Characteristics:

Lumen Output:	750 to 1,600 lm
Lumens per watt (typical):	83 to 88 lm/W
CCT:	3000K, 4000K
Lifespan:	50,000 running hours

Wall Mounted Square Downlight

Size: 9W-18W



Description:

The LITELUME™ Wall Mounted Square Downlight (LL-WMSQD) features a die-cast aluminum housing with a powder coated finish. This fixture features High Power Factor, and low THD. Universal voltage, multiple lumen package and size allows for use in residential and commercial applications. Applications: Security, Pathway, Accent, Hallway and Walkway lighting.

Characteristics:

Lumen Output:	750 to 1,600 lm
Lumens per watt (typical):	83 to 88 lm/W
CCT:	3000K, 4000K
Lifespan:	Up to 100,000 running hours

Wall Mounted Square Uplight Downlight

Size: 9W-18W



Description:

The LITELUME™ Wall Mounted Square Uplight Downlight (LL-WMSQUD) features a die-cast aluminum housing with a powder coated finish. This fixture features High Power Factor, and low THD. Universal voltage, multiple lumen package and size allows for use in residential and commercial applications. Applications: Security, Pathway, Accent, Hallway and Walkway lighting.

Characteristics:

Lumen Output:	750 to 1,600 lm
Lumens per watt (typical):	83 to 88 lm/W
CCT:	3000K, 4000K
Lifespan:	Up to 100,000 running hours

Crosspack

Size: 15W-34W



Description:

The LITELUME™ Crosspack (LL-CP) features a die-formed cold rolled steel housing with a high transmission UV-resistant acrylic lens for excellent uniformity. The 3 different size housings allows for multiple different architectural options.

Applications: Security, Pathway, Perimeter, Hallway and Walkway lighting.

Characteristics:

Lumen Output:	665 to 2,200 lm
Lumens per watt (typical):	44 to 65 lm/W
CCT:	3000K, 4000K
Lifespan:	Up to 50,000 running hours

Slimpack

Size: 15W



Description:

The LITELUME™ Slimpack (LL-SP) features a die-formed cold rolled steel housing with a UV-resistant polycarbonate optical lens for longlasting durability. The compact size allows for multi use in many different applications replacing up to100w. Applications: Security, Pathway, Perimeter, Hallway and Walkway lighting.

Characteristics:

Lumen Output:	550 to 660 lm
Lumens per watt (typical):	36 to 40 lm/W
CCT:	3000K, 4000K
Lifespan:	Up to 50,000 running hours

Wallpack All Purpose Series

Size: 30-125W



*Not all product variations listed on this page are DLC qualified. Visit www.designlights.org/search to confirm qualification

Description:

The LITELUME™ Wallpack (LL-WP) All Purpose Series features a die-cast aluminum housing with a UV-resistant polycarbonate optical lens for long-lasting durability. This “one size fits all” wattages, replaces 70W-400W HID lighting boasting huge energy savings and performance. Applications: Security, Pathway, Perimeter, Hallway and Walkway lighting.

Characteristics:

Lumen Output:	3,550 to 15,000 lm
Lumens per watt (typical):	111 to 125 lm/W
CCT:	3000K, 4000K, 5000K (Individual and Selectable)
Lifespan:	Up to 100,000 running hours

Wallpack Medium

Size: 26W-62W



Description:

The LITELUME™ Wallpack Medium (LL-WPM) features a die-cast aluminum housing with a UV-resistant polycarbonate optical lens for long-lasting durability. Installation can be done without opening the driver box. CCT and Wattage Selectable.

Applications: Hallway, Perimeter lighting and Walkway lighting.

Characteristics:

Lumen Output:	3,600 to 7,800 lm
Lumens per watt (typical):	131 to 133 lm/W
CCT:	3000K/4000K/5000K Selectable
Lifespan:	Up to 100,000 running hours

Wallpack Large

Size: 40W-100W



Description:

The LITELUME™ Wallpack Large (LL-WPL) features a die-cast aluminum housing with a UV-resistant polycarbonate optical lens for long-lasting durability. Installation can be done without opening the driver box. CCT and Wattage Selectable.

Applications: Hallway, Perimeter lighting and Walkway lighting.

Characteristics:

Lumen Output:	6,000 to 12,400 lm
Lumens per watt (typical):	132 to 137 lm/W
CCT:	3000K/4000K/5000K Selectable
Lifespan:	Up to 100,000 running hours

LED CANOPY



Garage Canopy Low Profile

Size: 30W-90W



*Not all product variations listed on this page are DLC qualified. Visit www.designlights.org/search to confirm qualification

Description:

The LITELUME™ LED Garage canopy Low Profile (LL-GCLP) is a low profile luminaire constructed with a IP65 rated one piece die cast housing suitable for both indoor and outdoor applications. Featuring a proprietary optical system with anti-glare lens making this fixture ideal for parking garages, storage areas, walkways and low or high security areas.

Characteristics:

Lumen Output:	3,800 to 11,600 lm
Lumens per watt (typical):	117 to 129 lm/W
CCT:	4000K, 5000K
Lifespan:	Up to 100,000 running hours

Square Canopy Low Profile

Size: 27W-60W



*Not all product variations listed on this page are DLC qualified. Visit www.designlights.org/search to confirm qualification

Description:

The LITELUME™ LED Square Canopy Low Profile Pack (LL-SCLP) boasts up to 140 lumens per watt. Featuring a sealed die-cast construction and shatter-resistant polycarbonate acrylic optical lens with UV stabilizers. Compact in design and symmetry making this luminaire ideal for walkways, parking garages, entrance ways, and over-all canopy applications.

Characteristics:

Lumen Output:	3,750 to 8,000 lm
Lumens per watt (typical):	130 to 141 lm/W
CCT:	3000K, 4000K, 5000K
Lifespan:	Up to 100,000 running hours

LED Canopy Heavy Duty

Size: 100W



*Not all product variations listed on this page are DLC qualified. Visit www.designlights.org/search to confirm qualification

Description:

The LITELUME™ LED Canopy Heavy Duty (LL-CHD) is a premium performance luminaire delivering up to 133 lumens per watt. Featuring a sealed IP65 rated heavy duty die-cast housing and shatter-resistant polycarbonate acrylic optical lens with UV stabilizers. Compact in design and symmetry making this luminaire ideal for industrial, commercial, storage, walkways, parking garages, entrance ways, and high illumination canopy applications.

Characteristics:

Lumen Output:	3,550 to 15,000 lm
Lumens per watt (typical):	126 to 133 lm/W
CCT:	4000K, 5000K, 5700K
Distribution:	160°
Lifespan:	Up to 100,000 running hours

Recessed Canopy Soffit Replacement

Size: 30W-65W



Description:

The LITELUME™ Recessed Canopy Soffit Replacement (LL-RCSR) is available with an optical distribution designed to replace HID lighting systems up to 250w MH or HPS. The low profile housing is designed to replace existing recessed canopy lights up to 12" round or square, and can be used in new construction. Typical applications include covered entryways and soffits in retail centers, schools and universities, office buildings and medical facilities. Mounting heights of 12 to 16 feet can be used based on light level and uniformity requirements.

Characteristics:

Lumen Output:	4,590 to 10,348 lm
Lumens per watt (typical):	135 to 144 lm/W
CCT:	3000K, 4000K, 5000K
Distribution:	Type V
Lifespan:	219,000 hrs @ 25°C

Architectural Round Canopy Small

Size: 37W-84W



Description:

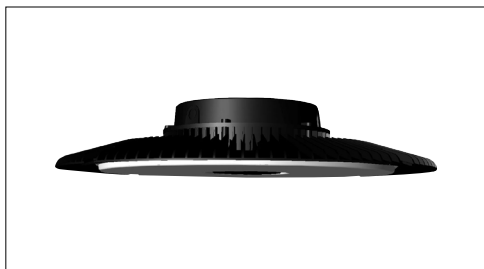
The LITELUME™ Architectural Round Canopy Small (LL- ARCS) is available in Type III or V distributions with two lens options designed to replace HID lighting systems up to 250w MH or HPS. Typical area lighting applications include retail centers, industrial parks, schools and universities, public transport and airports, office buildings and medical facilities. Mounting heights of 12 to 20 feet can be used based on light level and uniformity requirements.

Characteristics:

Lumen Output:	2,986 to 7,887 lm
Lumens per watt (typical):	77 to 92 lm/W
CCT:	3000K, 4000K, 5000K
Distribution:	Type III, Type IV
Lifespan:	473,000 hrs @ 25°C

Architectural Round Canopy Large

Size: 100W-276W



Description:

The LITELUME™ Architectural Round Canopy Large (LL- ARCL) is available in Type III or V distributions with two lens options designed to replace HID lighting systems up to 1000w MH or HPS. Typical area lighting applications include retail centers, industrial parks, schools and universities, public transport and airports, office buildings and medical facilities. Mounting heights of 12 to 30 feet can be used based on light level and uniformity requirements.

Characteristics:

Lumen Output:	7,661 to 32,477 lm
Lumens per watt (typical):	77 to 92 lm/W
CCT:	3000K, 4000K, 5000K
Distribution:	Type III, Type IV
Lifespan:	362,000 hrs @ 25°C

Parking Garage Ocular

Size: 28W-70W



Description:

The LITELUME™ LED Parking Garage Ocular (LL-PGO) is a low profile luminaire constructed with a IP65 rated one piece die cast housing suitable for both indoor and outdoor applications. Visually comfortable with 11.4% up light to provide enhance uniformity. Featuring a proprietary optical system with anti-glare lens making this fixture ideal for parking garages, storage areas, walkways and low or high security areas.

Characteristics:

Lumen Output:	4,326 to 9,080 lm
Lumens per watt (typical):	140 lm/W
CCT:	4000K/5000K Selectable
Distribution:	Type V
Lifespan:	Features High performance LED's with up to 100,000 running hours

Garage Canopy Equalizer

Size: 45W-70W



Description:

The LITELUME™ LED Garage Canopy Equalizer (LL-GCE) is a low profile luminaire constructed with a IP65 rated one piece die cast housing suitable for both indoor and outdoor applications. Subtle equal illumination with 15% uplight to provide enhance uniformity. Featuring a proprietary optical system with anti-glare lens making this fixture ideal for parking garages, storage areas, walkways and low or high security areas.

Characteristics:

Lumen Output:	5,625 to 8,750 lm
Lumens per watt (typical):	125 lm/W
CCT:	4000K, 5000K
Distribution:	Type V
Lifespan:	Features High performance LED's with up to 100,000 running hours

LED SPORTS LIGHT



Sports Light Elite

Size: 350W-600W



*Not all product variations listed on this page are DLC qualified. Visit www.designlights.org/search to confirm qualification

Description:

The LITELUME™ Sportlume Series Sports Lighter Elite (LL-SLE) incorporates an updated LED package, premium driver, built in surge suppression, laser site guide along with upgraded dynamic thermal management. Featuring a beautiful solid state die-cast aluminum body, with a premium patented design, 3G vibration rated, specifically tailored for sports field applications.

Characteristics:

Lumen Output:	51,000 to 84,000 lm
Lumens per watt (typical):	135 to 141 lm/W
CCT:	4000K, 5000K, 5700K
Beam Angle:	4H*4V
Lifespan:	Up to 100,000 running hours

Sports Light Premium

Size: 650W-850W



*Not all product variations listed on this page are DLC qualified. Visit www.designlights.org/search to confirm qualification

Description:

The LITELUME™ Sportlume Series Sports Lighter Premium Generation 2 (LL-SLP) incorporates an updated LED package, premium driver, built in surge suppression, laser site guide along with upgraded dynamic thermal management. Featuring a beautiful solid state diecast aluminum body, with a premium patented design, 3G vibration rated, specifically tailored for sports field applications .

Characteristics:

Lumen Output:	7,661 to 32,477 lm
Lumens per watt (typical):	140lm/W
CCT:	4000K, 5000K, 5700K
Distribution:	4H*4V, 3H*3V
Lifespan:	Up to 100,000 running hours

AMBERLUME SERIES



Area Light

Size: 22W-81W



Description:

The LITELUME™ Amberlume Series Area Light (LL-ALAL) is available in two sizes and three wattages with a wide choice of mounting configurations and an IES Type V distribution designed to replace HID lighting systems from 70w to 250w MH or HPS for wildlife or security applications requiring monochromatic AMBER light. LEDs operate between 585 and 595 nm, greater than 560nm required for wildlife protection. Typical applications include general area, parking, flood, security, and accent lighting for retail centers, industrial parks, schools and universities, public transit and airports, office buildings and medical facilities. Mounting heights of 10 to 25 feet can be used based on light level and uniformity requirements.

Characteristics:

Lumen Output:	1,159 to 2,607 lm
Lumens per watt (typical):	32 to 46 lm/W
CCT:	Amber
Lifespan:	429,000 hrs @ 25°C (L70)

Architectural Enclosed Post Top Small

Size: 46W-78W



Description:

The LITELUME™ Amberlume Series Architectural Enclosed Post Top Small (LL-ALAEPTS) is available in a Type V distribution designed to replace HID lighting systems up to 250w MH or HPS for wildlife or security applications requiring monochromatic AMBER light. LEDs operate between 585 and 595 nm, greater than 560nm required for wildlife protection. The fixture mounts to a pole top tenon. Typical area lighting applications include parking areas, walkways, and street lighting applications. Mounting heights of 12 to 20 feet can be used based on light level and uniformity requirements.

Characteristics:

Lumen Output:	1,012 to 1,717 lm
Lumens per watt (typical):	21 lm/W
CCT:	Amber
Lifespan:	473,000 hrs @ 25°C (L70)

Bollard Square Flat Top

Size: 15W



Description:

The LITELUME™ Amberlume Series Bollard Square Flat Top (LL-ALBSFT) LED Bollards are designed to replace HID lighting systems up to 70w MH or HPS for wildlife or security applications requiring monochromatic AMBER light. LEDs operate between 585 and 595nm, greater than 560nm required for wildlife protection. These fixtures are ideal for retail centers, industrial parks, schools and universities, public transit and airports, office buildings and medical facilities

Characteristics:

Lumen Output:	270 to 277 lm
Lumens per watt (typical):	16 lm/W
CCT:	Amber
Lifespan:	473,000 hrs @ 25°C (L70)

Wall Pack Small Full Cutoff

Size: 22W



Description:

The LITELUME™ Amberlume Series Wall Pack Small Full Cutoff (LLALWPSFC) luminaire is available in an IES Type V distribution and designed to replace HID lighting systems up to 175w MH or HPS for wildlife or security applications requiring monochromatic AMBER light. LEDs operate between 585 and 595 nm, greater than 560nm required for wildlife protection. Typical wall mounted lighting applications include retail centers, industrial parks, schools and universities, office buildings and medical facilities. Mounting heights of 12 to 18 feet can be used based on light level and uniformity requirements.

Characteristics:

Lumen Output:	794 lm
Lumens per watt (typical):	32 lm/W
CCT:	Amber
Lifespan:	196,000 hrs @ 25°C (L70)

Wall Pack Medium Full Cutoff

Size: 36W



Description:

The LITELUME™ Amberlume Series Wall Pack Medium Full Cutoff (LLALWPMFC) luminaire is available in an IES Type V distribution and designed to replace HID lighting systems 175w to 250w MH or HPS for wildlife or security applications requiring monochromatic AMBER light. LEDs operate between 585 and 595 nm, greater than 560nm required for wildlife protection. Typical wall mounted lighting applications include retail centers, industrial parks, schools and universities, office buildings and medical facilities. Mounting heights of 12 to 18 feet can be used based on light level and uniformity requirements.

Characteristics:

Lumen Output:	1,279 lm
Lumens per watt (typical):	32 lm/W
CCT:	Amber
Lifespan:	213,000 hrs @ 25°C (L70)

Canopy Square Low Profile

Size: 39W-52W



Description:

The LITELUME™ Amberlume Series Canopy Square Low Profile (LLALCSLP) luminaire with optional integral sensor is available in two wattages with an IES Type V distribution designed to replace HID lighting systems up to 175w MH or HPS for wildlife or security applications requiring monochromatic AMBER light. LEDs operate between 585 and 595nm, greater than 560nm required for wildlife protection. Typical parking garage applications include retail centers, industrial parks, schools and universities, public transit and airports, office buildings and medical facilities. Mounting heights of 8 to 14 feet can be used based on light level and uniformity requirements.

Characteristics:

Lumen Output:	1,248 to 1,664 lm
Lumens per watt (typical):	32 lm/W
CCT:	Amber
Lifespan:	196,000 hrs @ 25°C (L70)

LED BULKHEAD



Bulkhead Square Open Frame

Size: 12W-25W



Description:

The LITELUME™ Bulkhead Square Open Frame (LL-BSOF) is designed to replace HID lighting systems up to 250w MH or HPS. The open door frame allows for maximum light output. Typical applications include office and public buildings, condominiums, schools, shopping malls, and hospitality. Recommended mounting heights are 8 to 20 feet.

Characteristics:

Lumen Output:	1,545 to 3,667 lm
Lumens per watt (typical):	119 to 135 lm/W
CCT:	3000K, 4000K, 5000K
Lifespan:	187,000 hrs @ 25°C (L70)

Bulkhead Square Half Cutoff

Size: 12W-25W



Description:

The LITELUME™ Bulkhead Square Half Cutoff (LL-BSHC) is designed to replace HID lighting systems up to 250w MH or HPS. The open door frame allows for maximum light output. Typical applications include office and public buildings, condominiums, schools, shopping malls, and hospitality. Recommended mounting heights are 8 to 20 feet.

Characteristics:

Lumen Output:	1,458 to 3,667 lm
Lumens per watt (typical):	119 to 135 lm/W
CCT:	3000K, 4000K, 5000K
Lifespan:	187,000 hrs @ 25°C (L70)

Bulkhead Square Grid Frame

Size: 12W-25W



Description:

The LITELUME™ Bulkhead Square Grid Frame (LL-BSGF) is designed to replace HID lighting systems up to 250w MH or HPS. The open door frame allows for maximum light output. Typical applications include office and public buildings, condominiums, schools, shopping malls, and hospitality. Recommended mounting heights are 8 to 20 feet.

Characteristics:

Lumen Output:	1,313 to 3,115 lm
Lumens per watt (typical):	101 to 114 lm/W
CCT:	3000K, 4000K, 5000K
Lifespan:	187,000 hrs @ 25°C (L70)

Bulkhead Round Open Frame

Size: 12W-25W



Description:

The LITELUME™ Recessed Canopy Soffit Replacement (LL-RCSR) is available with an optical distribution designed to replace HID lighting systems up to 250w MH or HPS. The low profile housing is designed to replace existing recessed canopy lights up to 12” round or square, and can be used in new construction. Typical applications include covered entryways and soffits in retail centers, schools and universities, office buildings and medical facilities. Mounting heights of 12 to 16 feet can be used based on light level and uniformity requirements.

Characteristics:

Lumen Output:	1,586 to 3,763 lm
Lumens per watt (typical):	119 to 135 lm/W
CCT:	3000K, 4000K, 5000K
Lifespan:	187,000 hrs @ 25°C (L70)

Bulkhead Round Half Cutoff

Size: 12W-25W



Description:

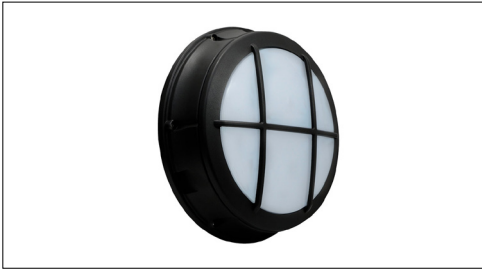
The LITELUME™ Bulkhead Round Half Cutoff (LL-BRHC) is designed to replace HID lighting systems up to 250w MH or HPS. The open door frame allows for maximum light output. Typical applications include office and public buildings, condominiums, schools, shopping malls, and hospitality. Recommended mounting heights are 8 to 20 feet.

Characteristics:

Lumen Output:	1,586 to 3,763 lm
Lumens per watt (typical):	119 to 135 lm/W
CCT:	3000K, 4000K, 5000K
Lifespan:	187,000 hrs @ 25°C (L70)

Bulkhead Round Grid Frame

Size: 12W-25W



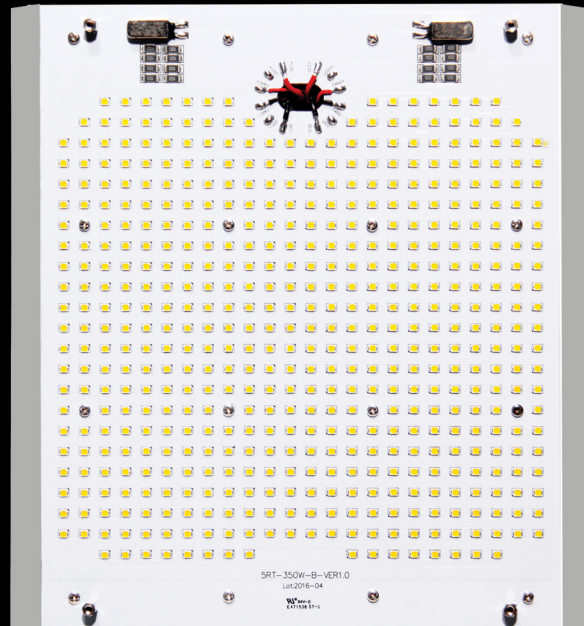
Description:

The LITELUME™ Bulkhead Round Grid Frame (LL-BRGF) is designed to replace HID lighting systems up to 250w MH or HPS. The open door frame allows for maximum light output. Typical applications include office and public buildings, condominiums, schools, shopping malls, and hospitality. Recommended mounting heights are 8 to 20 feet.

Characteristics:

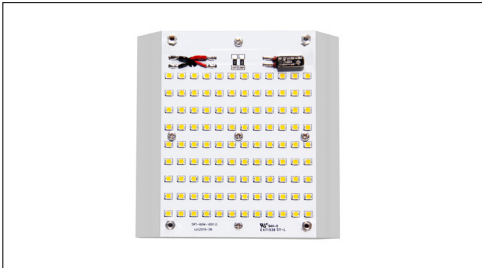
Lumen Output:	1,349 to 3,201 lm
Lumens per watt (typical):	104 to 118 lm/W
CCT:	3000K, 4000K, 5000K
Lifespan:	187,000 hrs @ 25°C (L70)

LED RETROFIT KIT



Retrofit Kit Small

Size: 30W-60W



Description:

The LITELUME™ Retrofit Kit Small Retrolume Series (LL-RKS) features a rigid die cast innovative optic design. High quality Nichia LEDS powered with a Meanwell driver and simple installation allows for complete upgrade while restoring fixtures originality.

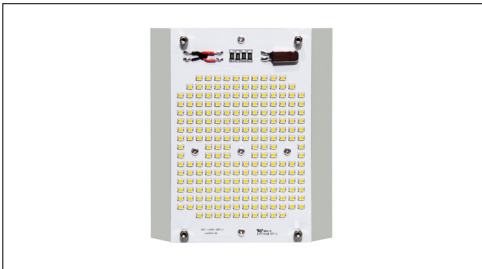
Applications: Area Lights, Flood lights, Wall packs, Canopies, General, and spec grade municipality fixtures.

Characteristics:

Lumen Output:	3,648 to 6,728 lm
Lumen's Per Watt (typical):	120 to 127 lm/W
CCT:	4000K, 5000K
Lifespan:	Features High Quality Nichia LED's with up to 100,000 running hours

Retrofit Kit Medium

Size: 75W-120W



Description:

The LITELUME™ Retrofit Kit Medium Retrolume Series (LL-RKM) features a rigid die cast innovative optic design. High quality Nichia LEDS powered with a Meanwell driver and simple installation allows for complete upgrade while restoring fixtures originality.

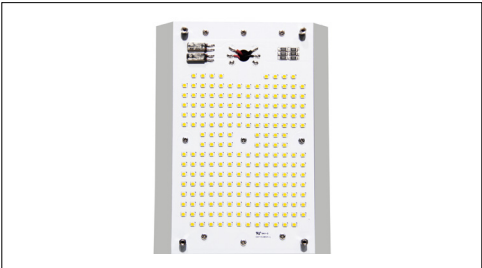
Applications: Area Lights, Flood lights, Wall packs, Canopies, General, and spec grade municipality fixtures.

Characteristics:

Lumen Output:	8,656 to 15,236 lm
Lumens per watt (typical):	120 to 127 lm/W
CCT:	4000K, 5000K
Lifespan:	Features High Quality Nichia LED's with up to 100,000 running hours

Retrofit Kit Large

Size: 150W-200W



Description:

The LITELUME™ Retrofit Kit Large Retrolume Series (LL-RKL) features a rigid die cast innovative optic design. High quality Nichia LEDS powered with a Meanwell driver and simple installation allows for complete upgrade while restoring fixtures originality.

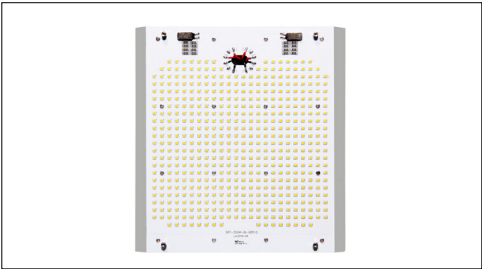
Applications: Area Lights, Flood lights, Wall packs, Canopies, General, and spec grade municipality fixtures.

Characteristics:

Lumen Output:	17,967 to 23,578 lm
Lumen's Per Watt (typical):	120 to 127 lm/W
CCT:	4000K, 5000K
Lifespan:	Features High Quality Nichia LED's with up to 100,000 running hours

Retrofit Kit Extra Large

Size: 280W-350W



Description:

The LITELUME™ Retrofit Kit Extra Large Retrolume Series (LL-RKXL) features a rigid die cast innovative optic design. High quality Nichia LEDS powered with a Meanwell driver and simple installation allows for complete upgrade while restoring fixtures originality.

Applications: Area Lights, Flood lights, Wall packs, Canopies, General, and spec grade municipality fixtures.

Characteristics:

Lumen Output:	33,336 to 43,514 lm
Lumens per watt (typical):	120 to 127 lm/W
CCT:	4000K, 5000K
Lifespan:	Up to 100,000 running hours

LED VANDAL RESISTANT



Vandal Resistant Square Medium Low Profile

Size: 23W



Description:

The LITELUME™ Vandal Resistant Square Medium Low Profile (LL-VRSMLP) Surface Mount luminaire is available with an optical distribution designed specifically to replace HID lighting systems up to 100w MH or HPS. Typical lighting applications include retail centers, industrial parks, schools and universities, public transit and airports, office buildings and medical facilities. Mounting heights of 8 to 14 feet can be used based on light level and uniformity requirements.

Characteristics:

Lumen Output:	2,774 to 2,890 lm
Lumen's Per Watt (typical):	103 to 107 lm/W
CCT:	4000K, 5000K
Distribution:	Type V
Lifespan:	169,000 hrs @ 25°C

Vandal Resistant Round Low Profile

Size: 34W



Description:

The LITELUME™ Vandal Resistant Round Low Profile (LL-VRRLP) Surface Mount luminaire is available for surface with an optical distribution designed specifically to replace HID lighting systems up to 100w MH or HPS. Typical lighting applications include retail centers, industrial parks, schools and universities, public transit and airports, office buildings and medical facilities. Mounting heights of 8 to 16 feet can be used based on light level and uniformity requirements.

Characteristics:

Lumen Output:	4,536 to 4,725 lm
Lumen's Per Watt (typical):	117 to 121 lm/W
CCT:	4000K, 5000K
Distribution:	Type V
Lifespan:	147,000 hrs @ 25°C

Vandal Resistant Square Large Low Profile

Size: 45W



Description:

The LITELUME™ Vandal Resistant Square Large Low Profile (LL-VRSLLP) Surface Mount luminaire is available with an optical distribution designed specifically to replace HID lighting systems up to 100w MH or HPS. Typical lighting applications include retail centers, industrial parks, schools and universities, public transit and airports, office buildings and medical facilities. Mounting heights of 8 to 14 feet can be used based on light level and uniformity requirements..

Characteristics:

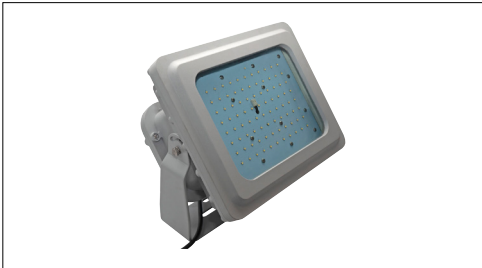
Lumen Output:	5,498 to 5,737 lm
Lumen's Per Watt (typical):	102 to 107 lm/W
CCT:	4000K, 5000K
Distribution:	Type V
Lifespan:	147,000 hrs @ 25°C

LED HAZARDOUS LOCATIONS



Flood Light Hazardous Location

Size: 132W



Description:

The LITELUME™ Flood Light Hazardous Location (LL-FLHL) Class 1, Division 2 is available with a clear tempered glass lens. Typical lighting applications include industrial facilities, oil, gas, painting facilities, manufacturing, and auto service facilities.

Characteristics:

Lumen Output:	14,482 to 15,046 lm
Lumen's Per Watt (typical):	104 to 108 lm/W
CCT:	4000K, 5000K
Lifespan:	329,000 hrs @ 25°C

All Purpose Luminaire Hazardous Location

Size: 57W



Description:

The LITELUME™ All Purpose Hazardous Location (LL-APLHL) Class 1, Division 2 Luminaire is available with a clear tempered glass lens. Typical lighting applications include industrial facilities, oil, gas, painting facilities, manufacturing, and auto service facilities.

Characteristics:

Lumen Output:	8,599 to 8,957 lm
Lumens per watt (typical):	135 to 140 lm/W
CCT:	4000K, 5000K
Lifespan:	183,000 hrs @ 25°C

Surface Mount Linear 12" Hazardous Location

Size: 22W-37W



Description:

The LITELUME™ Surface Mount Linear 12" Hazardous Location (LL-SML12HL) Class 1, Division 2 series wall and ceiling mount luminaire is available with clear or LumaLens lenses, and open, vertical half or horizontal half door frame designs designed to replace HID lighting systems from 70w to 175w MH or HPS. Typical lighting applications include industrial facilities, oil, gas, painting facilities, and auto service facilities. Mounting heights of 8 to 18 feet can be used based on light level and uniformity requirements.

Characteristics:

Lumen Output:	3,199 to 5,538 lm
Lumen's Per Watt (typical):	123 to 129 lm/W
CCT:	4000K, 5000K
Lifespan:	187,000 hrs

Surface Mount Linear 24" Hazardous Location

Size: 47W-66W



Description:

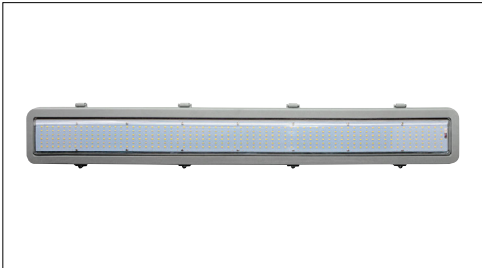
The LITELUME™ Surface Mount Linear 24" Hazardous Location (LLSML24HL) Class 1, Division 2 series wall and ceiling mount luminaire is available with clear or LumaLens lenses and open door frame designed to replace HID lighting systems from 175w to 250w MH or HPS. Typical lighting applications include industrial facilities, oil, gas, painting facilities, and auto service facilities. Mounting heights of 12 to 25 feet can be used based on light level and uniformity requirements.

Characteristics:

Lumen Output:	7,017 to 10,294 lm
Lumens per watt (typical):	121 to 134 lm/W
CCT:	4000K, 5000K
Lifespan:	62,000 hrs

Surface Mount Linear 48" Hazardous Location

Size: 112W-136W



Description:

The LITELUME™ Surface Mount Linear 48" Hazardous Location (LLSML48HL) Class 1, Division 2 series wall and ceiling mount luminaire is available with clear or LumaLens lenses and open door frame designed to replace HID lighting systems up to 400w MH or HPS. Typical lighting applications include industrial facilities, oil, gas, painting facilities, and auto service facilities. Mounting heights of 18 to 30 feet can be used based on light level and uniformity requirements.

Characteristics:

Lumen Output:	15,636 to 19,773 lm
Lumen's Per Watt (typical):	124 to 130 lm/W
CCT:	4000K, 5000K
Lifespan:	74,000 hrs

Wall Mount Linear 12" Hazardous Location

Size: 22W-37W



Description:

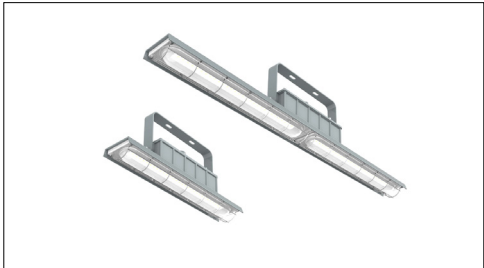
The LITELUME™ Wall Mount Linear 12" Hazardous Location (LL-WML12HL) Class 1, Division 2 Flood luminaire is available with a clear tempered glass lens. Typical lighting applications include industrial facilities, oil, gas, painting facilities, manufacturing, and auto service facilities.

Characteristics:

Lumen Output:	3,001 to 5,292 lm
Lumen's Per Watt (typical):	123 to 129 lm/W
CCT:	4000K, 5000K
Distribution:	Type II, Type III
Lifespan:	187,000 hrs

Linear H2/H4 Hazardous Location

Size: 20W-80W



Description:

The LITELUME™ Linear H2/H4 Hazardous Location (LL-LH2HL/LL-LH4HL) Class 1, Division 2 series luminaire is available with a heavy duty impact resistant polycarbonate lense and comes in 2' and 4' lengths. Designed to replace HID lighting systems up to 250w MH or HPS. Typical lighting applications include industrial facilities, oil, gas, painting facilities, and auto service facilities. Mounting heights of 18 to 30 feet can be used based on light level and uniformity requirements.

Characteristics:

Lumen Output:	15,636 to 19,773 lm
Lumens per watt (typical):	120 to 127 lm/W
CCT:	124 to 130 lm/W
Lifespan:	Up to 100,000 running hours

LED EXPLOSION PROOF



High Bay Round UFO Explosion Proof

Size: 20W-280W



Description:

The LITELUME™ High Bay Round UFO Explosion Proof (LL-HBRUEP) Class 1, Division 1 Luminaire is available with a clear tempered glass lens. Typical lighting applications include industrial facilities, marine vessels, mining, chemical production & processing, oil & gas refineries and high humidity, dust and temperature facilities.

Characteristics:

Lumen Output:	2,660 to 39,200 lm
Lumen's Per Watt (typical):	133 to 140 lm/W
CCT:	4000K, 5000K
Distribution:	Standard: 120°, Optional: 40°, 60° & 90°
Lifespan:	Up to 100,000 running hours

Bay Square Explosion Proof

Size: 20W-200W



Description:

The LITELUME™ Bay Square Explosion Proof (LL-BSEP) Class 1, Division 1 Luminaire is available with a clear tempered glass lens. Typical lighting applications include industrial facilities, marine vessels, mining, chemical production & processing, oil & gas refineries and high humidity, dust and temperature facilities.

Characteristics:

Lumen Output:	2,660 to 28,000 lm
Lumen's Per Watt (typical):	133 to 140 lm/W
CCT:	4000K, 5000K
Distribution:	Standard: 120°, Optional: 40°, 60° & 90°
Lifespan:	Up to 100,000 running hours

Jelly Jar Explosion Proof

Size: 30W-40W



Description:

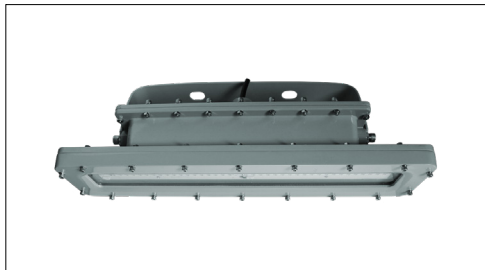
The LITELUME™ Jelly Jar Explosion Proof (LL-JJEP) Class 1, Division 1 Luminaire is a low wattage security light specifically designed for general illumination at hazardous locations. Typical lighting applications include industrial facilities, marine vessels, mining, chemical production & processing, oil & gas refineries and high humidity, dust and temperature facilities.

Characteristics:

Lumen Output:	3,848 to 5,600 lm
Lumen's Per Watt (typical):	133 to 140 lm/W
CCT:	4000K, 5000K
Distribution:	Standard: 120°, Optional: 40°, 60° & 90°
Lifespan:	Up to 100,000 running hours

Linear Explosion Proof

Size: 20W-120W



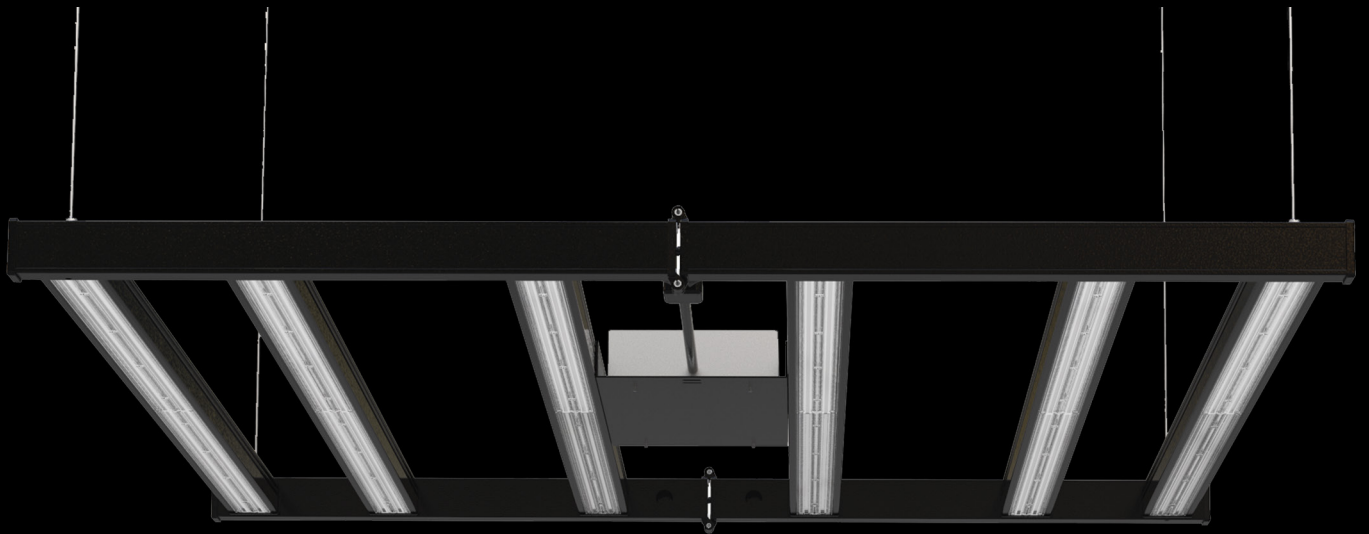
Description:

The LITELUME™ Linear Explosion Proof (LL-L2EP/LL-L4EP) Class 1, Division 1 Luminaire is available with a clear tempered glass lens. Typical lighting applications include industrial facilities, marine vessels, mining, chemical production & processing, oil & gas refineries and high humidity, dust and temperature facilities.

Characteristics:

Lumen Output:	2,660 to 16,800 lm
Lumen's Per Watt (typical):	133 to 140 lm/W
CCT:	4000K, 5000K
Distribution:	Standard: 120°, Optional: 40°, 60° & 90°
Lifespan:	Up to 100,000 running hours

HORTICULTURE



Veg Light – Multi-White Daylight Analog – 660W



Features:

- Industry Leading Performance
- Standard 2x4 Foot Print
- Power Pass Through Optional
- Natural White Light
- Patented 40-57 or 30-50 Spectrum
- Dimmable from 5%-100%
- UL1598D Horticultural Approval
- Architectural White Powder Coated Housing
- Made in the USA Patent #9820447

Characteristics:

Input Power:	150W-185W MAX
Input Voltage / Current (660W):	120 @ 1.8A 240 @ .80A 277 @ .70A
Spectra:	Multi-White Daylight Analog
Lifespan:	80,000 hours (L70)

ZBloom 660W



Features:

- Industry Leading Performance
- Industry Standard Footprint
- Fully Customizable to Suit Individual Growing Styles
- Natural White Light
- Patented Tunable Spectrum (USPN 9,820,447; 10,159,198; CAPN CA2994308C)
- Optional 385nm/660nm Kicker
- Powder Coated Aluminum Housing
- UL8800 Horticultural Approval
- Made in the USA

Characteristics:

Input Power:	660W MAX
Input Voltage / Current (660W):	120 @ 1.8A 240 @ .80A 277 @ .70A
Spectra:	Multi-White Daylight Analog
Lifespan:	80,000 hours (L70)

All Purpose Grow Light

Size: 400W-1000W



Description:

The LITELUME™ All Purpose Grow Light (LL-APGL) features a state of the art foldable design and tool free installation. Extruded AirCraft Aluminum light bar engines, removable driver, and secondary optics. This product is specialized for Cannabis growing with an offering of 2 different spectrums in 4 different wattages. Applications include Indoor and Greenhouse. This Luminaire achieves an impressive efficiency of 2.6 Qmol s-1 per watt. 4, 6, 8 or 10 passively cooled LED bars engines provide an intense light coverage with no fans.

Characteristics:

CCT Spectrum:	Greenhouse; WW(3000K) + CW(6000K) + 660nm Indoor; WW(3000K) + PW(5000K) + 660nm
LEDs:	Proprietary blend of high performance Sanan + EpiLEDs specially binned
Lifespan:	Up to 100,000 running hours

LED Residential Grow Luminaires



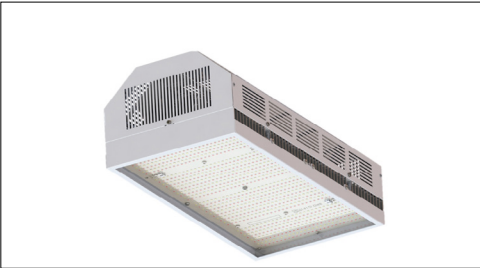
Description:

The LITELUME™ BBG series includes commercial-grade, premium performance LED luminaires for horticultural settings. Provides a full spectrum of PAR (photosynthetically active radiation) for full-cycle cultivation. High-efficacy LEDs (PPF/J of 2.4) reduce energy costs compared to traditional grow luminaires. Longlife LEDs (Q90 of 38,000 hours) virtually eliminates expensive relamping. High-gloss, painted aluminum housings withstand demanding environments. A variety of mounting options simplify height adjustments. Dimming levels are controlled by three-way switch Hi/Lo/ Off.

Characteristics:

Color Spectrum:	Full spectrum distribution of PAR (photosynthetically active radiation) for full-cycle cultivation US Patent 10,785,921.*
Lifespan:	Long-life LEDs provide 38,000 hours of operation with at least 90% (Q90) of initial PPF (photosynthetic photon flux)

640W Grow Light



Features:

- Replaces a 1000W DE 1:1
- Ideally Suited for GH Supplemental or Indoor Top Lighting
- Industry Leading Performance
- Patented Tunable Spectrum (USPN 9,820,447; 10,159,198; CAPN CA 2994308C)
- Natural White Light
- Patent Pending Thermal Solution
- Powder Coated Aluminum Housing
- UL8800 Horticulture Approved
- Made in the USA

Characteristics:

Input Power:	640W MAX
Input Voltage / Current (640W):	120 @5.3A 240 @ 2.7A 277 @ 2.3A
Spectra:	Multi-White Daylight Analog
Lifespan:	80,000 hours (L70)

Clone Light - Multi-White Daylight Analog - 660W



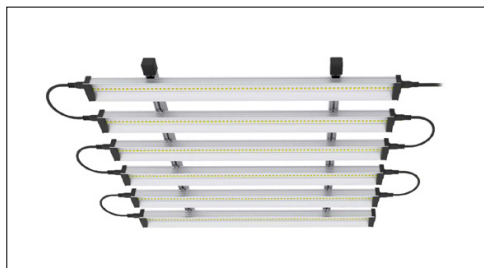
Features:

- Industry Leading Performance
- Standard 2x4 Foot Print
- Power Pass Through Optional
- Natural White Light
- Patented 40-57 or 30-50 Spectrum
- Dimmable from 5%-100%
- UL1598D Horticultural Approval
- Architectural White Powder Coated Housing
- Made in the USA Patent #9820447

Characteristics:

Input Power:	80W-100W MAX
Input Voltage / Current (660W):	120 @5.3A 240 @ 2.7A 277 @ 2.3A
Spectra:	Multi-White Daylight Analog
Lifespan:	80,000 hours (L70)

LED Grow Light - Multi-White Daylight Analog - 660W



Features:

- Anti-corrosion, waterproof IP65
- Free blue light hazard, light efficiency up to 150LM/W
- Easy installation and wide application
- Patent Tunable Spectrum (USPN 9,820,447;10,159,198; CAPN (CA2994308C)
- Pure aluminum heatsink, low heat
- Various Spectrum and customization.

Characteristics:

Power:	12W-48W
Input Voltage:	AC110-277V
Lumen's Per Watt (typical):	150 lm/W
Lifespan:	50,000 hrs

RGB



LED Projector Floodlight

Size: 35W-150W



Description:

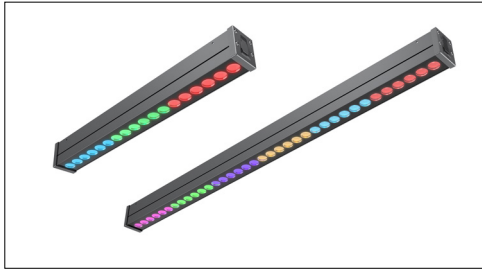
The LITELUME™ LED Projector Floodlight (LL-FL39) is designed for landscape lighting, with a variety of beam angles. The lamp has four kinds of light emitting modes, single white, CCT adjustable, RGB and RGBW, as well as four control functions of 0-10V dim, Dali dim, bluetooth control and DMX control, which can ensure normal use in various occasions.

Characteristics:

Lumen Output:	3,500 to 15,000 lm
Lumen's Per Watt (typical):	70 to 100 lm/W
CCT:	4000K (2200K,3000K, 5000K optional)/RGB/RGBW/ CCT adjustable(2200K -4000K)

LED Linear Wall Wash

Size: 18W-36W



Description:

The LITELUME™ LED Linear Wall Wash (LL-FL56) is used for landscape lighting, building facade, billboards, bridges and custom designs. The fixture provides single white, RGB and RGBW, as well as DALI dimming and DMX control functions to ensure normal use in various situations. Multiple beam angles, wattages and mounting options available.

Characteristics:

Lumen Output:	1,800 to 3,600 lm
Lumens per watt (typical):	100 lm/W
CCT:	4000K (2200K,3000K, 5000K optional)/RGB/RGBW

EXIT & EMERGENCY



Chicago Approved Edgelit Aluminum Exit/Stair Sign



Illumination:

- Ultra-bright, energy efficient, long-lasting white LEDs provide uniform illumination.
- UV stabilized, silk screened acrylic panels provide consistent, uniform illumination.

Electrical:

- Dual 120/277 voltage.
- Charge rate/power "ON" LED indicator light and pushto- test switch for mandated code compliance testing.
- 4.8V long life, maintenance-free, rechargeable NiCd battery (EM models only).
- Internal solid-state transfer switch automatically connects the internal battery to LED board for minimum 90-minute emergency illumination.
- Fully automatic solid-state, two rate charger initiates battery charging to recharge a discharged battery in 24 hours.

Mounting:

- Die-cast aluminum mounting canopy provided for universal top, end or back mount

Chicago Approved Recessed Edgelit Aluminum Exit/Stairs Signs



Illumination:

- Ultra-bright, energy efficient, long-lasting white LEDs provide uniform illumination.
- UV stabilized, silk screened acrylic panels provide consistent, uniform illumination.

Electrical:

- Dual 120V/277 voltage.
- Charge rate/power "ON" LED indicator light and pushto- test switch for mandated code compliance testing.
- 4.8V long life, maintenance-free, rechargeable NiCd battery (EM models only).
- Internal solid-state transfer switch automatically connects the internal battery to LED board for minimum 120-minute emergency illumination.
- Fully automatic solid-state, two rate charger initiates battery charging to recharge a discharged battery in 24 hours.

Mounting:

- Compatible with drywall or drop-thru ceiling mount installations.
- Wall mount capability optional.

Chicago Approved Steel Exit/Stair Sign



Illumination:

- Ultra-bright, energy efficient, long-lasting white LEDs provide uniform illumination.

Electrical:

- Universal 120V - 277V voltage.
- Charge rate/power "ON" LED indicator light and pushto- test switch for mandated code compliance testing.
- 4.8V long life, maintenance-free, rechargeable NiCd battery (EM models only).
- Internal solid-state transfer switch automatically connects the internal battery to LED board for minimum 90-minute emergency illumination.
- Fully automatic solid-state, two rate charger initiates battery charging to recharge a discharged battery in 24 hours.

Mounting:

- Mounting canopy included for top or end mount.
- Universal knockout pattern on backplate for wall mount.

Edgelit Aluminum Exit Sign



Illumination:

- Ultra bright, energy efficient, long life Red or Green LEDs.
- UV-stabilized ultra-clear acrylic edgelit panel provides consistent, uniform illumination.
- Double face utilizes factory installed silver or white mylar background panel

Electrical:

- Dual 120/277 voltage.
- Charge rate/power "ON" LED indicator light and pushto- test switch for mandated code compliance testing.
- 4.8V long life, maintenance-free, rechargeable NiCd battery (EM models only).
- Internal solid-state transfer switch automatically connects the internal battery to LED board for minimum 90-minute emergency illumination.
- Fully automatic solid-state, two rate charger initiates battery charging to recharge a discharged battery in 24 hours.

Mounting:

- Aluminum mounting canopy included for top, end or back mount.

Thin Thermoplastic Exit Sign



Illumination:

- Ultra bright, energy efficient, long life Red or Green LEDs.

Electrical:

- Dual 120/277 voltage.
- Charge rate/power "ON" LED indicator light and push-to-test switch for mandated code compliance testing.
- 4.8V long life, maintenance-free, rechargeable NiCd battery (EM models only).
- Internal solid-state transfer switch automatically connects the internal battery to LED board for minimum 90-minute emergency illumination.
- Fully automatic solid-state, two rate charger initiates battery charging to recharge a discharged battery in 24 hours.

Mounting:

- Mounting canopy included for top or end mount.
- Universal knockout pattern on back plate for wall mount.

Compact Thermoplastic Exit Sign



Illumination:

- Ultra bright, energy efficient, long life Red or Green LEDs.

Electrical:

- Dual 120/277 voltage.
- Charge rate/power "ON" LED indicator light and push-to- test switch for mandated code compliance testing.
- 1.2V Long life, maintenance-free, rechargeable NiCd battery.
- Internal solid-state transfer switch automatically connects the internal battery to LED board for minimum 90-minute emergency illumination.
- Fully automatic solid-state, two rate charger initiates battery charging to recharge a discharged battery in 24 hours.

Mounting:

- EZ-snap mounting canopy included for top or end mount.
- Universal K/O pattern on back plate for wall mount.

Thermoplastic Exit Sign



Illumination:

- Ultra-bright, energy efficient, long-lasting white LEDs provide uniform illumination.

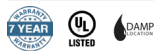
Electrical:

- Dual 120/277 voltage.
- Charge rate/power "ON" LED indicator light and push-to-test switch for mandated code compliance testing.
- 4.8V long life, maintenance-free, rechargeable NiCd battery (EM models only).
- Internal solid-state transfer switch automatically connects the internal battery to LED board for minimum 90-minute emergency illumination.
- Fully automatic solid-state, two rate charger initiates battery charging to recharge a discharged battery in 24 hours.

Mounting:

- EZ-snap mounting canopy included for top or end mount.
- Universal K/O pattern on back plate for wall mount.

Hazardous Location Exit Sign



Illumination:

- Ultra bright, energy efficient, long life Red or Green LEDs.

Electrical:

- Dual 120/277 voltage.
- Unique bi-color LED indicator light alerts occupant on battery condition (Green-normal, Red-check-battery).
- Charge rate/power "ON" LED indicator light and push-to-test switch for mandated code compliance testing.
- 4.8V long life, maintenance-free, rechargeable NiCd battery (EM models only).
- Internal solid-state transfer switch automatically connects the internal battery to LED board for minimum 90-minute emergency illumination.
- Fully automatic solid-state, two rate charger initiates battery charging to recharge a discharged battery in 24 hours.

Mounting:

- Die-cast mounting brackets provided for surface wallmount installation.
- Pre-installed conduit hub for conduit and pendantmount installations.

NEMA4X/NSF Exit Sign



Illumination:

- Ultra bright, energy efficient, long life Red or Green LEDs

Electrical:

- Dual 120/277 voltage.
- Unique bi-color LED indicator light alerts occupant on battery condition (Green-normal, Red-check-battery).
- Charge rate/power "ON" LED indicator light and pushto- test switch for mandated code compliance testing.
- 4.8V long life, maintenance-free, rechargeable NiCd battery (EM models only).
- Internal solid-state transfer switch automatically connects the internal battery to LED board for minimum 90-minute emergency illumination.
- Fully automatic solid-state, two rate charger initiates battery charging to recharge a discharged battery in 24 hours.

Mounting:

- Universal knockout pattern on back provided with gasket for watertight seal for back mount.
- Polycarbonate mounting canopy included for top or end mount.

Die-Cast Aluminum Exit Sign



Illumination:

- Ultra bright, energy efficient, long life Red or Green LEDs.

Electrical:

- Dual 120/277 voltage.
- Charge rate/power "ON" LED indicator light and pushto- test switch for mandated code compliance testing.
- 4.8V long life, maintenance-free, rechargeable NiCd battery (EM models only).
- Internal solid-state transfer switch automatically connects the internal battery to LED board for minimum 90-minute emergency illumination.
- Fully automatic solid-state, two rate charger initiates battery charging to recharge a discharged battery in 24 hours.

Mounting:

- Aluminum mounting canopy included for top or end mount.
- Universal knockout pattern on back plate for wall mount.

Thin Die-Cast Aluminum Exit Sign



Illumination:

- Ultra-bright, energy efficient, long-lasting white LEDs provide uniform illumination.

Electrical:

- Dual 120/277 voltage.
- Charge rate/power "ON" LED indicator light and push-to-test switch for mandated code compliance testing.
- 2.4V long life, maintenance-free, rechargeable NiCd battery (EM models only).
- Internal solid-state transfer switch automatically connects the internal battery to LED board for minimum 90-minute emergency illumination.
- Fully automatic solid-state, two rate charger initiates battery charging to recharge a discharged battery in 24 hours.

Mounting:

- Aluminum mounting canopy included for top or end mount.
- Universal knockout pattern on back plate for wall mount.

New York City Compliant Edgelit Aluminum Exit Sign



Illumination:

- Ultra bright, energy efficient, long life Red LEDs.
- UV-stabilized ultra-clear acrylic edgelit panel provides consistent, uniform illumination.
- Double face utilizes factory installed silver or white mylar background panel.
- New York City compliant 8" EXIT letters.

Electrical:

- Dual 120/277 voltage.
- Charge rate/power "ON" LED indicator light and push-to-test switch for mandated code compliance testing.
- 4.8V long life, maintenance-free, rechargeable NiCd battery (EM models only).
- Internal solid-state transfer switch automatically connects the internal battery to LED board for minimum 90-minute emergency illumination.
- Fully automatic solid-state, two rate charger initiates battery charging to recharge a discharged battery in 24 hours.

Mounting:

- Aluminum mounting canopy included for top, end or back mount. Available in optional black or white powdercoated finishes.

New York City Compliant Die-Cast Aluminum Exit Sign



Illumination:

- Ultra bright, energy efficient, long life Red LEDs.
- New York City compliant 8" EXIT letters.

Electrical:

- Dual 120/277 voltage.
- Charge rate/power "ON" LED indicator light and push-to-test switch for mandated code compliance testing.
- 4.8V long life, maintenance-free, rechargeable NiCd battery (EM models only).
- Internal solid-state transfer switch automatically connects the internal battery to LED board for minimum 90-minute emergency illumination.
- Fully automatic solid-state, two rate charger initiates battery charging to recharge a discharged battery in 24 hours.

Mounting:

- Aluminum mounting canopy included for top or end mount.
- Universal knockout pattern on back plate for wall mount.

New York Compliant Recessed Edgelit Aluminum Exit Signs



Illumination:

- Ultra bright, energy efficient, long life Red LEDs.
- UV-stabilized ultra-clear acrylic edgelit panel provides consistent, uniform illumination.
- Double face utilizes factory installed silver or white mylar background panel.
- New York City compliant 8" EXIT letters

Electrical:

- Dual 120V/277 voltage.
- Charge rate/power "ON" LED indicator light and pushto- test switch for mandated code compliance testing.
- 4.8V long life, maintenance-free, rechargeable NiCd battery (EM models only).
- Internal solid-state transfer switch automatically connects the internal battery to LED board for minimum 90-minute emergency illumination.
- Fully automatic solid-state, two rate charger initiates battery charging to recharge a discharged battery in 24 hours.

Mounting:

- Compatible with drywall or drop-thru ceiling mount installations. Bar hangers included.
- Wall mount capability optional.

New York City Compliant Steel Exit Sign



Illumination:

- Ultra bright, energy efficient, long life Red LEDs.
- New York City compliant 8" EXIT letters.

Electrical:

- Dual 120/277 voltage.
- Charge rate/power "ON" LED indicator light and push-to-test switch for mandated code compliance testing.
- 3.6V long life, maintenance-free, rechargeable NiCd battery (EM models only).
- Internal solid-state transfer switch automatically connects the internal battery to LED board for minimum 90-minute emergency illumination.
- Fully automatic solid-state, two rate charger initiates battery charging to recharge a discharged battery in 24 hours.

Mounting:

- Aluminum mounting canopy included for top or end mount.
- Universal knockout pattern on back plate for wall mount.
- Knockout provided for conduit feed applications.

Edgelit Thermoplastic Exit Sign



Illumination:

- Ultra bright, energy efficient, long life Red or Green LEDs.
- UV-stabilized ultra-clear acrylic edgelit panel provides consistent, uniform illumination.
- Double face utilizes factory installed silver or white mylar background panel

Electrical:

- Dual 120/277 voltage.
- Unique bi-color LED indicator light alerts occupant on battery condition (Green-normal, Red-check battery).
- Push-to-test switch for mandated code compliance testing.
- 4.8V long life maintenance-free, rechargeable NiCd battery (EM models only)
- Internal solid-state transfer switch automatically connects the internal battery to LED board for minimum 90-minute emergency illumination.
- Fully automatic solid-state, two rate charger initiates battery charging to recharge a discharged battery in 24 hours.

Mounting:

- EZ-snap mounting canopy included for top, end or back mount.

Recessed Edgelit Aluminum Exit Signs



Illumination:

- Ultra bright, energy efficient, long life Red or Green LEDs.
- UV-stabilized ultra-clear acrylic edgelit panel provides consistent, uniform illumination.
- Double face utilizes factory installed silver or white mylar background panel.

Electrical:

- Dual 120V/277 voltage.
- Charge rate/power "ON" LED indicator light and push-to-test switch for mandated code compliance testing.
- 4.8V long life, maintenance-free, rechargeable NiCd battery (EM models only).
- Internal solid-state transfer switch automatically connects the internal battery to LED board for minimum 90-minute emergency illumination.
- Fully automatic solid-state, two rate charger initiates battery charging to recharge a discharged battery in 24 hours.

Mounting:

- Compatible with drywall or drop-thru ceiling mount installations. Bar hangers included.
- Wall mount capability optional.

Running Man LED Exit Sign



Illumination:

- Ultra bright, energy efficient, long-lasting white LED provides even, fully illuminated panel.

Electrical:

- Dual 120/347 voltage.
- Charge rate/power "ON" LED indicator light and push-to-test switch for mandated code compliance testing.
- 9.6V Long life, maintenance-free, rechargeable NiCd battery.
- Internal solid-state transfer switch automatically connects the internal battery to LED board and LED lamp heads for minimum 90-minute emergency illumination.
- Fully automatic solid-state, two rate charger initiates battery charging to recharge a discharged battery in 24 hours.

Mounting:

- EZ-snap mounting canopy included for top or end mount.
- Universal knockout pattern on back plate for wall mount.
- Field selectable, universal directional indication provided with three (Left, Right and No Arrow) pictogram legends.

Steel Exit Sign



Illumination:

- Ultra bright, energy efficient, long life Red or Green LEDs.

Electrical:

- Dual 120/277 voltage.
- Charge rate/power “ON” LED indicator light and push-to-test switch for mandated code compliance testing.
- 4.8V long life, maintenance-free, rechargeable NiCd battery (EM models only).
- Internal solid-state transfer switch automatically connects the internal battery to LED board for minimum 90-minute emergency illumination.
- Fully automatic solid-state, two rate charger initiates battery charging to recharge a discharged battery in 24 hours.

Mounting:

- Mounting canopy included for top or end mount.
- Universal knockout pattern on back plate for wall mount.

Compact Wet Location Polycarbonate Exit Sign



Illumination:

- Ultra bright, energy efficient, long life Red or Green LEDs.

Electrical:

- Dual 120/277 voltage.
- Unique bi-color LED indicator light alerts occupant on battery condition (Green-normal, Red-check battery).
- 4.8V long life, maintenance-free, rechargeable NiCd battery (EM models only).
- Internal solid-state transfer switch automatically connects the internal battery to LED board for minimum 90-minute emergency illumination.
- Fully automatic solid-state, two rate charger initiates battery charging to recharge a discharged battery in 24 hours.

Mounting:

- Polycarbonate mounting canopy included for top or end mount.
- Universal K/O pattern on back plate for wall mount.

Wet Location Polycarbonate Exit Sign



Illumination:

- Ultra bright, energy efficient, long life Red or Green LEDs.

Electrical:

- Dual 120V/277 voltage.
- Charge rate/power "ON" LED indicator light and push-to-test switch for mandated code compliance testing.
- 4.8V long life, maintenance-free, rechargeable NiCd battery (EM models only).
- Internal solid-state transfer switch automatically connects the internal battery to LED board for minimum 90-minute emergency illumination.
- Fully automatic solid-state, two rate charger initiates battery charging to recharge a discharged battery in 24 hours.

Mounting:

- Mounting hardware provided for back surface wall mount.

Chicago Approved All Led Exit/Stair Sign & Emergency Steel Combo



Illumination:

- Long lasting, energy efficient white LED EXIT or STAIR sign illumination .
- Two 6V 5.3W adjustable Chicago approved white LED lamp heads.

Electrical:

- Dual 120/277 voltage.
- Charge rate/power "ON" LED indicator light and push-to-test switch for mandated code compliance testing.
- 6V sealed lead acid, maintenance-free, rechargeable battery.
- LVD (low voltage disconnect) prevents battery from deep discharge.
- Internal solid-state transfer switch automatically connects the internal battery to LED board and LED lamp heads for minimum 120-minute emergency illumination.
- Fully automatic solid-state, two rate charger initiates battery charging to recharge a discharged battery in 24 hours.

Mounting:

- EZ-snap mounting canopy included for top or end mount.
- Universal knockout pattern on back plate for wall mount.

Reduced Profile All LED Exit & Emergency Thermoplastic Combo



Illumination:

- Ultra-bright, energy efficient, long-life Red or Green LED EXIT sign illumination.
- Ultra-bright, energy efficient, long-life White LED adjustable LED lamp heads provide up to 30-ft center-to-center spacing with 3-ft path of egress at 10-ft mounting height.
- 1.5 watt (3 LEDs x 0.50 watt) per head.
- Unique all-inclusive lamp, reflector and lens assembly

Electrical:

- Dual 120/277 voltage.
- Unique bi-color LED indicator light alerts occupant on battery condition (Green-normal, Red-check battery).
- 3.6V long life, maintenance-free, rechargeable NiCd battery.
- Internal solid-state transfer switch automatically connects the internal battery to LED lamp heads for minimum 90-minute emergency illumination.
- Fully automatic solid-state, two rate charger initiates battery charging to recharge a discharged battery in 24 hours.

Mounting:

- Mounting canopy included for top or end mount
- Universal knockout pattern on back plate for wall mount.

Low Profile All LED Exit & Emergency Thermoplastic Combo



Illumination:

- Adjustable long lasting, efficient ultra bright white LED lamp heads.
- One, 0.5 watt white LED per lamp head.
- Unique all inclusive lamp, reflector and lens assembly.
- Long-lasting, energy efficient Red or Green LED EXIT sign illumination.

Electrical:

- Dual 120V/277 voltage standard. Optional dual 120V/230V available.
- Unique bi-color LED indicator light alerts occupant on battery condition (Green-normal, Red-check battery).
- 3.6V long life, maintenance-free, rechargeable NiCd battery.
- Internal solid-state transfer switch automatically connects the internal battery to LED board and LED lamp heads for minimum 90-minute emergency illumination.
- Fully automatic solid-state, two rate charger initiates battery charging to recharge a discharged battery in 24 hours.

Mounting:

- EZ-snap thermoplastic mounting canopy included - provides top or end mount.
- Universal knockout pattern on back plate for wall mount.

Die-Cast Aluminum LED Exit & Emergency Combo



Illumination:

- Ultra bright, energy efficient, long life Red or Green LED.
- High performance premium grade, ultra bright white LED lamps.
- 3W (1 LED x 3 watts) per head.

Electrical:

- Dual 120V/277 voltage,
- Charge rate/power "ON" LED indicator light and push-to-test switch for mandated code compliance testing.
- Internal solid-state transfer switch automatically connects the internal battery to LED board and LED lamp heads for minimum 90-minute emergency illumination.
- Fully automatic solid-state, two rate charger initiates battery charging to recharge a discharged battery in 24 hours.
- Remote capacity available as an option.

Mounting:

- Aluminum mounting canopy included for top or end mount.
- Universal knockout pattern on back plate for wall mount.

All LED Exit & Emergency Lightpipe Thermoplastic Combo



Illumination:

- Ultra bright, energy efficient white LED emergency lighting.
- 4.5 watt (36 LEDs x 0.125 watts) per light pipe.
- Adjustable high performance, smooth, chrome-plated, metallized reflector and acrylic, UV-stabilized "Light Pipe" lens for optimal light distribution.
- Long life, energy efficient Red or Green LED EXIT sign illumination

Electrical:

- Dual 120V/277 voltage,
- Charge rate/power "ON" LED indicator light and push-to-test switch for mandated code compliance testing.
- 4.8V long life, maintenance-free, rechargeable NiCd battery.
- Remote capacity of 3.0 watts standard.
- Internal solid-state transfer switch automatically connects the internal battery to LED board and LED lamp heads for minimum 90-minute emergency illumination.
- Fully automatic solid-state, two rate charger initiates battery charging to recharge a discharged battery in 24 hours.

Mounting:

- EZ-snap mounting canopy included for top or end mount.
- Universal knockout pattern on back plate for wall mount.

New York City Compliant LED Exit & Incandescent Emergency Steel Combo



Illumination:

- Two fully adjustable 12W, glare-free lamp heads with field installable 3rd emergency lighting head included.
- Knockouts provided on sides of unit to relocate lamp heads.
- High performance smooth metal reflector and glass lens for optimal light distribution.
- Ultra bright, energy efficient, long life Red LED exit sign illumination.
- New York Compliant 8" EXIT letters.

Electrical:

- Dual 120V/277 voltage,
- Charge rate/power "ON" LED indicator light and push-to-test switch for mandated code compliance testing.
- LVD (low voltage disconnect) prevents battery from deep discharge.
- 6V maintenance-free, rechargeable sealed lead acid battery.
- Internal solid-state transfer switch automatically connects the internal battery to LED board and LED lamp heads for minimum 90-minute emergency illumination.
- Fully automatic solid-state, two rate charger initiates battery charging to recharge a discharged battery in 24 hours.

Mounting:

- Mounting hardware provided for back surface wall mount.
- Knockouts provided for conduit feed applications.

Thin All LED Exit & Emergency Thermoplastic Combo



Illumination:

- Long lasting, efficient ultra bright white LED lamp heads.
- One 1.1 watt white LED per lamphead.
- Unique all-inclusive lamp, reflector and lens assembly.
- Long life ultra-bright, energy efficient Red or Green LED EXIT sign illumination.

Electrical:

- Dual 120V/277 voltage,
- Charge rate/power "ON" LED indicator light and push-to-test switch for mandated code compliance testing.
- Unique bi-color LED indicator alerts occupant on battery condition (Green-normal, Red-check battery).
- 3.6V Long life, maintenance-free, rechargeable NiCd battery.
- Internal solid-state transfer switch automatically connects the internal battery to LED board and LED lamp heads for minimum 90-minute emergency illumination.
- Fully automatic solid-state, two rate charger initiates battery charging to recharge a discharged battery in 24 hours.

Wet Location All Led Exit & Emergency Polycarbonate Combo



Illumination:

- Long lasting, efficient ultra bright white LED lamp heads.
- 3.6 watt (3 LEDs x 1.2 watt) per head.
- Adjustable LED lamp heads provide optimal center-to-center spacing.
- Long-life, energy efficient Red or Green LED EXIT sign illumination

Electrical:

- Dual 120V/277 voltage,
- Unique bi-color LED indicator alerts occupant on battery condition (Green-normal, Red-check battery).
- 6V Long life, maintenance-free, rechargeable NiCd battery.
- Internal solid-state transfer switch automatically connects the internal battery to LED board and LED lamp heads for minimum 90-minute emergency illumination.
- Fully automatic solid-state, two rate charger initiates battery charging to recharge a discharged battery in 24 hours.

Mounting:

- Die-cast aluminum mounting canopy included for top or end mount.
- Universal knockout pattern on back plate for wall mount.

All LED Hazardous Exit & Emergency Combo



Illumination:

- Two fully adjustable, ultra bright 3.3 watt high performance MR-16 base LED lamp heads for optimized center-to-center spacing.
- Long-life, energy efficient Red or Green LED EXIT sign illumination.

Electrical:

- Dual 120/277 voltage.
- Unique bi-color LED indicator light alerts occupant on battery condition (Green-normal, Red-check-battery).
- Charge rate/power "ON" LED indicator light and magnetic test switch for mandated code compliance testing.
- 6V/12V maintenance-free, rechargeable NiCd battery (12W, 15W models).
- Offers 4.8W and 7.8W of remote capacity (6V/12V DC output) standard on the 12W and 15W models.
- Internal solid-state transfer switch automatically connects the internal battery to LED board and lamp heads for minimum 90-minute emergency illumination.
- Fully automatic solid-state, two-rate charger initiates battery charging to recharge a discharged battery in 24 hours.

Mounting:

- Die-cast mounting brackets provided for surface wallmount installation.
- Pre-installed conduit hub for conduit and pendantmount installation.

All LED NEMA4X/NSF Exit & Emergency Combo



Illumination:

- Two fully adjustable, ultra bright 3.3 watt high performance MR-16 base LED lamp heads for optimized center-to-center spacing.
- Long-life, energy efficient Red or Green LED EXIT sign illumination

Electrical:

- Dual 120V/277 voltage,
- Unique bi-color LED indicator light alerts occupant on battery condition (Green-normal, Red-check-battery).
- Charge rate/power "ON" LED indicator light and push to- test switch for mandated code compliance testing.
- 6V/12V maintenance-free, rechargeable NiCd battery (12W, 15W models).
- 6V/12V maintenance-free, rechargeable sealed lead acid battery (28W model).
- Offers 4.8W, 7.8W, 20.8W of remote capacity (6V/12V DC output) standard on the 12W, 15W and 28W models.
- Internal solid-state transfer switch automatically connects the internal battery to LED board and LED lamp heads for minimum 90-minute emergency illumination.
- Fully automatic solid-state, two rate charger initiates battery charging to recharge a discharged battery in 24 hours.

Mounting:

- Universal knockout pattern on back provided with gasket for watertight seal for back mount.
- Polycarbonate mounting canopy included for top or end mount.

Low Level All LED Exit & Emergency Thermoplastic Combo



Illumination:

- Long lasting, efficient ultra bright white LED light strip.
- 3.1 watts (24 LEDs x 0.13 watts) per light strip.
- Patent-pending high performance, smooth, chrome plated, metalized reflector with acrylic UV stabilized lens for optimal light distribution.
- Long life ultra-bright, energy efficient Red or Green LED EXIT sign illumination

Electrical:

- Dual 120V/277 voltage,
- Unique bi-color LED indicator alerts occupant on battery condition (Green-normal, Red-check battery).
- Charge rate/power "ON" LED indicator light and pushto- test switch for mandated code compliance testing.
- 3.6V Long life, maintenance-free, rechargeable NiCd battery.
- Internal solid-state transfer switch automatically connects the internal battery to LED board and LED lamp heads for minimum 90-minute emergency illumination.
- Fully automatic solid-state, two rate charger initiates battery charging to recharge a discharged battery in 24 hours.

All LED Exit & Emergency Combo



Illumination:

- Long lasting, efficient ultra bright white LED lamp heads.
- 1 watt (8 LEDs x 0.125W) per head.
- High performance chrome-plated metallized reflector and plastic lens for optimal light distribution.
- Adjustable LED lamp heads provides optimal center-to-center spacing. Optional high-lumen heads are available for increased center-to-center spacing.
- Long life, energy efficient Red or Green LED EXIT sign illumination.

Electrical:

- Dual 120/277 voltage.
- Charge rate/power "ON" LED indicator light and push-to-test switch for mandated code compliance testing.
- 9.6V long life, maintenance-free, rechargeable NiCd battery.
- Internal solid-state transfer switch automatically connects the internal battery to LED board and LED lamp heads for minimum 90-minute emergency illumination.
- Fully automatic solid-state, two rate charger initiates battery charging to recharge a discharged battery in 24 hours.
- Remote capacity option available

Mounting:

- EZ-snap mounting canopy included for top or end mount.
- Universal knockout pattern on back plate for wall mount.

All LED Running Man Sign & Emergency Lightpipe Thermoplastic Combo



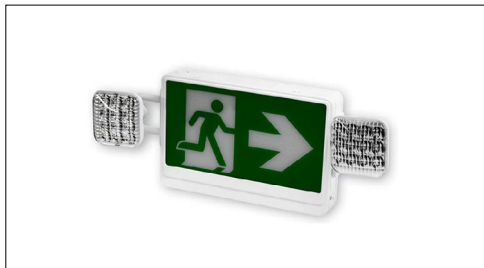
Illumination:

- Ultra bright, energy efficient white LED emergency lighting.
- 4.5 watt (36 LEDs x 0.125 watts) per light pipe.
- Adjustable high performance, smooth, chrome-plated, metalized reflector and acrylic, UV-stabilized "light pipe" lens for optimal light distribution.
- Ultra bright, energy efficient, long lasting white LED provides even, fully illuminated panel.

Electrical:

- Dual 120V/277 voltage,
- Charge rate/power "ON" LED indicator light and push-to-test switch for mandated code compliance testing.
- 4.8V Long life, maintenance-free, rechargeable NiCd battery.
- Remote capacity of 3.0 watts standard.
- Internal solid-state transfer switch automatically connects the internal battery to LED board and LED lamp heads for minimum 90-minute emergency illumination.
- Fully automatic solid-state, two rate charger initiates battery charging to recharge a discharged battery in 24 hours.

Running Man All LED Exit Sign & Emergency Combo



Illumination:

- Long lasting, efficient ultra bright white LED lamp heads.
- 1 watt (8 LEDs x 0.125W) per head.
- High performance chrome-plated metallized reflector and plastic lens for optimal light distribution.
- Adjustable LED lamp heads provides optimal center-to-center spacing. Optional high-lumen heads are available for increased center-to-center spacing.
- Ultra bright, energy efficient, long-lasting white LED provides even, fully illuminated panel.

Electrical:

- Dual 120/347 voltage.
- Charge rate/power "ON" LED indicator light and push-to-test switch for mandated code compliance testing.
- 9.6V Long life, maintenance-free, rechargeable NiCd battery.
- Internal solid-state transfer switch automatically connects the internal battery to LED board and LED lamp heads for minimum 90-minute emergency illumination.
- Fully automatic solid-state, two rate charger initiates battery charging to recharge a discharged battery in 24 hours.

Mounting:

- EZ-snap mounting canopy included for top or end mount.
- Field selectable, universal directional indication provided with three (Left, Right and No Arrow) pictogram legends

Low Level All LED Exit & Emergency Thermoplastic Combo



Illumination:

- Long lasting, efficient ultra bright white LED light strip.
- 3.1 watts (24 LEDs x 0.13 watts) per light strip.
- Patent-pending high performance, smooth, chrome plated, metalized reflector with acrylic UV stabilized lens for optimal light distribution.
- Long life ultra-bright, energy efficient Red or Green LED EXIT sign illumination

Electrical:

- Dual 120V/277 voltage,
- Unique bi-color LED indicator alerts occupant on battery condition (Green-normal, Red-check battery).
- Charge rate/power "ON" LED indicator light and push-to-test switch for mandated code compliance testing.
- 3.6V Long life, maintenance-free, rechargeable NiCd battery.
- Internal solid-state transfer switch automatically connects the internal battery to LED board and LED lamp heads for minimum 90-minute emergency illumination.
- Fully automatic solid-state, two rate charger initiates battery charging to recharge a discharged battery in 24 hours.

Chicago Approved Steel Emergency Unit



Illumination:

- Two, 6V/12V 12.0 watt adjustable bi-pin halogen lamp heads provide optimal center-to-center spacing.
- Long lasting, efficient, wedge base incandescent or bipin halogen lamps.
- High performance chrome-plated metallized reflector and glass lens for optimal light distribution

Electrical:

- Dual 120/277 voltage standard
- Charge rate/power "ON" LED indicator light and push-to-test switch for mandated code compliance testing
- LVD (low voltage disconnect) prevents battery from deep discharge
- 6V sealed lead acid, maintenance-free, rechargeable battery
- Internal solid-state transfer switch automatically connects the internal battery to LED lamp heads for minimum 120-minute emergency illumination.
- Fully automatic solid-state, two rate charger initiates battery charging to recharge a discharged battery in 24 hours.
- Remote capacity of 26W and 76W available on 50W and 100W models respectively.

Mounting:

- Knockouts on the back for wall mount.
- Side and top knockouts for conduit feed applications.

LED Chicago Approved Steel Emergency Unit



Illumination:

- Two, 6V, 3.3 watt adjustable white LED lamp heads in metal housing and PC lens provide optimal light distribution
- 3.3 watts of power per lamp head with a light output of 335 lumens

Electrical:

- Dual 120/277 voltage standard
- Unique bi-color LED indicator light alerts occupant on battery condition (Green-normal, Red-check battery)
- Charge rate/power "ON" LED indicator light and push-to-test switch for mandated code compliance testing
- LVD (low voltage disconnect) prevents battery from deep discharge
- 6V sealed lead acid, maintenance-free, rechargeable battery
- Internal solid-state transfer switch automatically connects the internal battery to LED lamp heads for minimum 120-minute emergency illumination.
- Fully automatic solid-state, two rate charger initiates battery charging to recharge a discharged battery in 24 hours.
- Remote capacity of 5.4 watts standard

Chicago Approved Steel Recessed Emergency Unit



Illumination:

- Two, 6V/12V 12W adjustable bi-pin halogen lamp heads.

Electrical:

- Dual 120/277 voltage standard
- Charge rate/power "ON" LED indicator light and push-to-test switch for mandated code compliance testing
- LVD (low voltage disconnect) prevents battery from deep discharge
- 6V sealed lead acid, maintenance-free, rechargeable battery
- Internal solid-state transfer switch automatically connects the internal battery to LED lamp heads for minimum 120-minute emergency illumination.
- Fully automatic solid-state, two rate charger initiates battery charging to recharge a discharged battery in 24 hours.
- Remote capacity of 26W standard on 50W models.

Mounting:

- Conveniently designed for use with T-bar grid ceilings.
- Holes provided on enclosure for wire-suspension mount.

LED Decorative Outdoor Die-Cast Ac/Emergency Unit



Illumination:

- Long lasting, efficient, ultra bright white LEDs.
- 12.0 watts (2 LEDs x 6.0 watt) per unit.
- Mirror-bright reflector and prismatic polycarbonate refractor.
- Can be used as a Normally-ON or Normally-OFF luminaire as well as on a switched circuit.
- Dissipates 1286 lumens in AC mode and 350 lumens in DC mode.

Electrical:

- Universal 120-277 voltage.
- Charge rate/power "ON" LED indicator light and push-to-test switch for mandated code compliance testing.
- 4.8V long life, maintenance-free, rechargeable NiCd battery.
- Internal solid-state transfer switch automatically connects the internal battery to LED lamp heads for minimum 90-minute emergency illumination.
- Fully automatic solid-state, two rate charger initiates battery charging to recharge a discharged battery in 24 hours.
- Self-diagnostic feature performs monthly, bi-annual, and annual tests to ensure reliable operation and meets electrical and life safety codes.
- Photocell control sensor included as standard for use as dusk-to-dawn luminaire.
- Field-selectable wiring allows for AC operation of unit to be controlled using a wall-switch, photocell or other switching mechanism.

LED Decorative Emergency Unit



Illumination:

- Long lasting, efficient, ultra bright white LED lamp heads.
- 1.0 watt (1 LED x 1.0 watt) per head.
- Unique all inclusive lamp, reflector and lens assembly.
- Adjustable LED lamp heads provide up to 50-ft center-to-center spacing with 3-ft path of egress at 12-ft mounting height.

Electrical:

- Dual 120/347 voltage.
- Charge rate/power "ON" LED indicator light and push-to-test switch for mandated code compliance testing.
- 4.8V maintenance-free, rechargeable nickel metal hydride battery.
- Internal solid-state transfer switch automatically connects the internal battery to LED board and LED lamp heads for minimum 90-minute emergency illumination.
- Fully automatic solid-state, two rate charger initiates battery charging to recharge a discharged battery in 24 hours.

Mounting:

- Universal knockout pattern on back plate for surface mount.
- Knockouts provided for conduit feed applications.
- Suitable for wall or ceiling mount.

Remote Capable Incandescent Emergency Unit



Illumination:

- Adjustable, glare-free PAR-Type lamp heads with 7.2W (on 6V models) and 9/12W (on 12V models) incandescent lamps.

Electrical:

- Dual 120/277 voltage standard
- Charge rate/power "ON" LED indicator light and push-to-test switch for mandated code compliance testing
- LVD (low voltage disconnect) prevents battery from deep discharge
- 6V sealed lead acid, maintenance-free, rechargeable battery
- Internal solid-state transfer switch automatically connects the internal battery to LED lamp heads for minimum 90-minute emergency illumination.
- Fully automatic solid-state, two rate charger initiates battery charging to recharge a discharged battery in 24 hours.

Mounting:

- Knockouts on the back for wall mount.
- Side and top knockouts for conduit feed applications.

LED Fixed Optics Thermoplastic Emergency Unit



Illumination:

- Adjustable long lasting, efficient, ultra bright white LED lamp heads.
- One, 0.5W white LED per lamp head.
- Unique all-inclusive lamp, reflector and lens assembly.

Electrical:

- Dual 120/277 voltage standard. Optional dual 120/230 voltage available.
- Unique bi-color LED indicator light alerts occupant on battery condition (Green-normal, Red-check battery).
- 3.6V long life, maintenance-free, rechargeable NiCd battery.
- Internal solid-state transfer switch automatically connects the internal battery to LED lamp heads for minimum 90-minute emergency illumination.
- Fully automatic solid-state, two rate charger initiates battery charging to recharge a discharged battery in 24 hours.

Mounting:

- Surface mount back plate fits most standard size junction boxes and snaps into place.
- Suitable for wall or ceiling mount.

LED Reduced Profile Thermoplastic Emergency Unit



Illumination:

- Long lasting, efficient, ultra bright white LED lamp heads.
- 1.5 watt (3 LEDs x 0.50 watt) per head.
- Unique all-inclusive lamp, reflector and lens assembly.
- Adjustable LED lamp heads provide up to 30-ft center-to-center spacing with 3-ft path of egress at 10-ft mounting height.

Electrical:

- Dual 120/277 voltage standard. Optional dual 120/230 voltage available.
- Unique bi-color LED indicator light alerts occupant on battery condition (Green-normal, Red-check battery).
- 3.6V long life, maintenance-free, rechargeable NiCd battery.
- Internal solid-state transfer switch automatically connects the internal battery to LED lamp heads for minimum 90-minute emergency illumination.
- Fully automatic solid-state, two rate charger initiates battery charging to recharge a discharged battery in 24 hours.

Mounting:

- Universal knockout pattern on back plate for surface mount.
- Knockouts provided for conduit feed applications.
- Suitable for wall or ceiling mount.

Adjustable Recessed Emergency Down-light Unit



Illumination:

- Adjustable ultra bright 8W bi-pin halogen or 1.5W LED lamp head.
- Sealed beam PAR36-type gimbal trim with smooth chrome-plated metallized reflector and plastic lens offers optimal light distribution.

Electrical:

- Dual 120/347 voltage.
- Charge rate/power "ON" LED indicator light and push-to-test switch for mandated code compliance testing.
- LVD (low voltage disconnect) prevents battery from deep discharge
- 6V sealed lead acid, maintenance-free, rechargeable battery
- Internal solid-state transfer switch automatically connects the internal battery to LED board and LED lamp heads for minimum 90-minute emergency illumination.
- Fully automatic solid-state, two rate charger initiates battery charging to recharge a discharged battery in 24 hours.

Mounting:

- Compatible with drop ceiling mount installations. Bar hangers included.

LED Hazardous Location Emergency Unit



Illumination:

- Two fully adjustable, ultra bright 3.3 watt high performance MR-16 base LED lamp heads for optimized center-to-center spacing.

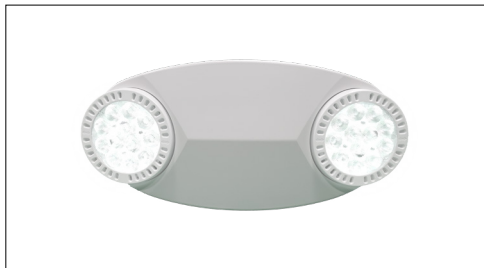
Electrical:

- Dual 120V/277 voltage,
- Unique bi-color LED indicator alerts occupant on battery condition (Green-normal, Red-check battery).
- Charge rate/power "ON" LED indicator light and pushto- test switch for mandated code compliance testing.
- 6V/12V maintenance-free, rechargeable NiCd battery.
- Offers 7.8W of remote capacity (6V/12V DC output) standard
- Internal solid-state transfer switch automatically connects the internal battery to LED board and LED lamp heads for minimum 90-minute emergency illumination.
- Fully automatic solid-state, two rate charger initiates battery charging to recharge a discharged battery in 24 hours.

Mounting:

- Die-cast mounting brackets provided for surface wall mount installation.
- Pre-installed conduit hub for conduit and pendant mount installation.

LED High Performance Emergency Thermoplastic Unit



Illumination:

- Ultra-bright, energy efficient, long-life White LED adjustable lamp heads provide up to 100-ft center-to-center spacing with a 3-ft path of egress at 7-1/2-ft mounting height.
- High performance chrome-plated metalized reflector and plastic lens.
- 12.0 watt (12 LEDs x 1.0 watt) per head.

Electrical:

- Dual 120/277 voltage standard
- Unique bi-color LED indicator light alerts occupant on battery condition (Green-normal, Red-check battery).
- Charge rate/power "ON" LED indicator light and push-to-test switch for mandated code compliance testing.
- 9.6V long-life, maintenance-free, rechargeable lithium iron phosphate battery.
- Remote capacity of 3.0 watts standard.
- Internal solid-state transfer switch automatically connects the internal battery to LED lamp heads for minimum 90-minute emergency illumination.
- Fully automatic solid-state, two rate charger initiates battery charging to recharge a discharged battery in 24 hours.

Mounting:

- Universal knockout pattern on back plate for surface mount.
- Knockouts provided for conduit feed applications.
- Suitable for wall or ceiling mount.

LED NEMA4X/NSF Emergency Unit



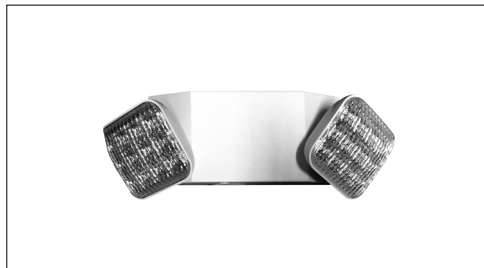
Illumination:

- Two fully adjustable, ultra bright 3.3 watt high performance MR-16 base LED lamp heads for optimized center-to-center spacing.

Electrical:

- Dual 120/277 voltage
- Unique bi-color LED indicator light alerts occupant on battery condition (Green-normal, Red-check-battery).
- Charge rate/power "ON" LED indicator light and magnetic test switch for mandated code compliance testing.
- 6V/12V maintenance-free, rechargeable NiCd battery (15W models).
- 6V/12V maintenance-free, rechargeable sealed lead acid battery (36W and 54W models).
- Offers 7.8W, 28.8W, 46.8W of remote capacity (6V/12V DC output) standard on the 15W, 36W and 54W models.
- Internal solid-state transfer switch automatically connects the internal battery to LED lamp heads for minimum 90-minute emergency illumination.
- Fully automatic solid-state, two-rate charger initiates battery charging to recharge a discharged battery in 24 hours (36 hours on the 54W model).

LED Thermoplastic Emergency Unit



Illumination:

- Long lasting, efficient, ultra bright white LEDs.
- 1.0 watt (8 LEDs x 0.125 watt) per head.
- High performance chrome-plated metalized reflector and plastic lens for optimal light distribution.
- Adjustable LED lamp heads provide optimal center-to-center spacing.

Electrical:

- Dual 120/277 voltage standard.
- Charge rate/power "ON" LED indicator light and push-to-test switch for mandated code compliance testing.
- 3.6V long life, maintenance-free, rechargeable NiCd battery.
- Internal solid-state transfer switch automatically connects the internal battery to LED lamp heads for minimum 90-minute emergency illumination.
- Fully automatic solid-state, two rate charger initiates battery charging to recharge a discharged battery in 24 hours.

Mounting:

- Universal knockout pattern on back plate for surface mount. Snaps into place making internal electrical connections.
- Suitable for wall or ceiling mount.
- Knockout for conduit applications.

LED Adjustable Optics Thermoplastic Emergency Unit



Illumination:

- Long lasting, efficient, ultra bright white LEDs.
- 1.0 watt (8 LEDs x 0.125 watt) per head.
- High performance chrome-plated metalized reflector and plastic lens for optimal light distribution.
- Two adjustable LED lamp heads provide optimal center-to-center spacing.

Electrical:

- Dual 120V/277 voltage,
- Charge rate/power "ON" LED indicator light and pushto- test switch for mandated code compliance testing.
- 3.6V Long life, maintenance-free, rechargeable NiCd battery.
- Internal solid-state transfer switch automatically connects the internal battery to LED board and LED lamp heads for minimum 90-minute emergency illumination.
- Fully automatic solid-state, two rate charger initiates battery charging to recharge a discharged battery in 24 hours.

Mounting:

- Universal knockout pattern on back plate for surface mount. Snaps into place making internal electrical connections.
- Suitable for wall or ceiling mount.
- Knockout for conduit applications.

LED Remote Capable Thermoplastic Emergency Unit



Illumination:

- Long lasting, efficient, ultra bright white LEDs.
- 1.0 watt (8 LEDs x 0.125 watt) per head.
- High performance chrome-plated metalized reflector and plastic lens for optimal light distribution.
- Adjustable LED lamp heads provides optimal center-to-center spacing.

Electrical:

- Dual 120/277 voltage standard.
- Charge rate/power "ON" LED indicator light and push-to-test switch for mandated code compliance testing.
- 3.6V long life, maintenance-free, rechargeable NiCd battery.
- Remote capacity of 3W standard.
- Internal solid-state transfer switch automatically connects the internal battery to LED lamp heads for minimum 90-minute emergency illumination.
- Fully automatic solid-state, two rate charger initiates battery charging to recharge a discharged battery in 24 hours.

Mounting:

- Universal knockout pattern on back plate for surface mount. Snaps into place making internal electrical connections.
- Suitable for wall or ceiling mount.
- Knockout for conduit applications.

LED Recessed Steel Emergency Unit



Illumination:

- Two fully adjustable 1.0 watt white LED lamp heads.
- High performance chrome-plated metal reflector and plastic lens for optimal light distribution.

Electrical:

- Dual 120/277 voltage.
- Charge rate/power "ON" LED indicator light and push-to-test switch for mandated code compliance testing.
- LVD (low voltage disconnect) prevents battery from deep discharge.
- 6V maintenance-free, rechargeable sealed lead acid battery.
- Remote capacity of 10.0 watts standard.
- Internal solid-state transfer switch automatically connects the internal battery to lamp heads for minimum 90-minute emergency illumination
- Fully automatic solid-state, two rate charger initiates battery charging to recharge a discharged battery in 24 hours.

Mounting:

- Bar hangers on the back box for recessed mount.
- Compatible with drop ceiling mount installations.

LED High Lumen Thermoplastic Emergency Unit



Illumination:

- Long lasting, efficient ultra bright white LED lamp heads.
- 1.5 watt (8 LEDs x 0.125) per head.
- High performance chrome-plated metalized reflector and plastic lens for optimal light distribution.
- Adjustable LED lamp heads provides optimal center-to-center spacing.

Electrical:

- Dual 120/277 voltage.
- Charge rate/power "ON" LED indicator light and push-to-test switch for mandated code compliance testing.
- LVD (low voltage disconnect) prevents battery from deep discharge.
- 6V sealed lead acid, maintenance-free, rechargeable battery.
- Remote capacity of 20.0 watt standard.
- Runs up to 8 hours without remote heads.
- Internal solid-state transfer switch automatically connects the internal battery to LED lamp heads for minimum 90-minute emergency illumination.
- Fully automatic solid-state, two rate charger initiates battery charging to recharge a discharged battery in 24 hours.

Mounting:

- Universal knockout pattern on back plate for wall mount.
- Side and top knockouts for conduit feed applications.

Wet Location Remote Capable LED Emergency Unit



Illumination:

- Sealed and gasketed weatherproof lamp heads with high performance chrome-plated metalized reflector and tempered glass lenses for optimal light distribution.
- Long lasting efficient ultra bright white LED lamp heads.
- 1.875W (15 LEDs x 0.125) per head.

Electrical:

- Dual 120V/277 voltage,
- Unique bi-color LED indicator alerts occupant on battery condition (Green-normal, Red-check battery).
- Charge rate/power "ON" LED indicator light and push-to-test switch for mandated code compliance testing.
- 9.6V long life, maintenance-free, rechargeable NiCd battery.
- Internal solid-state transfer switch automatically connects the internal battery to LED board and LED lamp heads for minimum 90-minute emergency illumination.
- Fully automatic solid-state, two rate charger initiates battery charging to recharge a discharged battery in 24 hours.
- Remote capacity of 3.7W standard in operating temperatures of 0°C - 50°C.

New York City Approved Emergency Unit



Illumination:

- Adjustable, glare-free PAR-Type lamp heads with 9W (on 6V models) and 12W (on 12V models) incandescent lamps.
- Field installable third lamp head included with the 27W and 50W models.

Electrical:

- Dual 120/277 voltage.
- Remote capacity of 14W standard on the 12V 3-head model
- Charge rate/power "ON" LED indicator light and push-to-test switch for mandated code compliance testing.
- 6V maintenance-free, rechargeable sealed lead acid battery.
- Internal solid-state transfer switch automatically connects the internal battery to lamp heads for minimum 90-minute emergency illumination.
- Fully automatic solid-state, two rate charger initiates battery charging to recharge a discharged battery in 24 hours.

Mounting:

- Knockouts on the back for wall mount.
- Side and top knockouts for conduit feed applications.

LED Recessed Emergency Unit



Illumination:

- Ultra-bright, energy efficient, long-life white LED lamp heads.
- 1.0 watt (1 LED x 1.0 watt) per head.
- Unique all-inclusive lamp, reflector, and lens assembly.
- Adjustable LED lamp heads provide up to 50-ft center-to-center spacing with a 3-ft path of egress at 12-ft mounting height.

Electrical:

- Dual 120/277 voltage
- Unique bi-color LED indicator light alerts occupant on battery condition (Green-normal, Red-check battery).
- Charge rate/power "ON" LED indicator light and push-to-test switch for mandated code compliance testing
- 4.8V long-life, maintenance-free, rechargeable nickel metal hydride battery.
- Internal solid-state transfer switch automatically connects the internal battery to LED lamp heads for minimum 90-minute emergency illumination.
- Fully automatic solid-state, two rate charger initiates battery charging to recharge a discharged battery in 24 hours.

Semi-Recessed MR-16 Emergency Unit



Illumination:

- Two fully adjustable ultra bright, round, 7.0 watt, MR-16 halogen lamp heads standard.
- High performance MR16 halogen lamps with smooth metallized reflector and glass lens for optimal light distribution.

Electrical:

- Dual 120/277 voltage.
- Charge rate/power "ON" LED indicator light and push-to-test switch for mandated code compliance testing.
- LVD (low voltage disconnect) prevents battery from deepdischarge.
- 6V maintenance-free, rechargeable sealed lead acid battery.
- Internal solid-state transfer switch automatically connects the internal battery to lamp heads for minimum 90-minute emergency illumination.
- Fully automatic solid-state, two rate charger initiates battery charging to recharge a discharged battery in 24 hours.

Mounting:

- Universal knockout pattern on the backplate for wall mount. Snaps into place making internal electrical connections.
- Knockout for conduit applications.

Remote Capable MR-16 Emergency Unit



Illumination:

- Two fully adjustable ultra bright, round, 12W, MR-16 halogen lamp heads standard.

Electrical:

- Offer 26W of remote capacity when using standard 12W halogen lamps, 43W of remote capacity when using 3.3W LED lamp.
- Dual 120/277 voltage.
- Charge rate/power "ON" LED indicator light and pusht-o-test switch for mandated code compliance testing.
- LVD (low voltage disconnect) prevents battery from deep discharge.
- 6V maintenance-free, rechargeable sealed lead acid battery.
- Internal solid-state transfer switch automatically connects the internal battery to lamp heads for minimum 90-minute emergency illumination.
- Fully automatic solid-state, two rate charger initiates battery charging to recharge a discharged battery in 24 hours.

Mounting:

- Surface mount via easy connect back plate, which fits most standard junction boxes and snaps into place making internal electrical connections.
- Conduit mount knockout on top of housing and backplate.
- Suitable for wall mount.

Wet Location Semi-Recessed MR-16 Emergency Unit



Illumination:

- Two fully adjustable, ultra bright, round, 7.2W MR-16 halogen lamp heads standard.
- Optional 3.6W white LED lamp heads available

Electrical:

- Dual 120/277 voltage.
- Charge rate/power "ON" LED indicator light and push-to-test switch for mandated code compliance testing.
- LVD (low voltage disconnect) prevents battery from deep discharge.
- 6V maintenance-free, rechargeable sealed lead acid battery.
- Internal solid-state transfer switch automatically connects the internal battery to lamp heads for minimum 90-minute emergency illumination.
- Fully automatic solid-state, two rate charger initiates battery charging to recharge a discharged battery in 24 hours.

Mounting:

- Conveniently designed for use with T-bar grid ceilings.
- Holes provided on enclosure for wire-suspension mount.

Emergency Driver For Led Lamps (With Internal/External Driver)



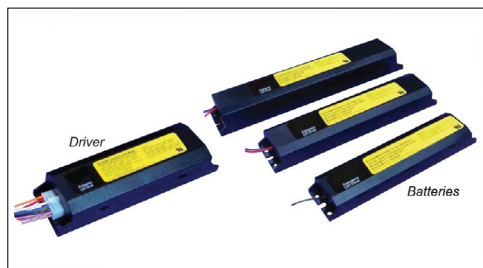
Illumination:

- Provides 180-320VDC (equals to 120-230VAC) to the load during emergency mode operation.
- For use with switched or unswitched fixtures.
- Can be used with LED lamp loads of up to 20W and provide 100% lumen output.

Electrical:

- Universal 120-277V, 50-60 Hz input.
- Charge/Power "ON" LED indicator light and push-to-test switch for mandated code compliance testing.
- Long-life, maintenance free, rechargeable NiCad battery.
- Output short/over current protection: Electronic limiting, with normal operation resuming upon removal of fault.
- 90 Minute minimum emergency operating time over full temperature range.
- 24 Hour maximum battery recharge time.

Constant-Current Emergency LED Driver



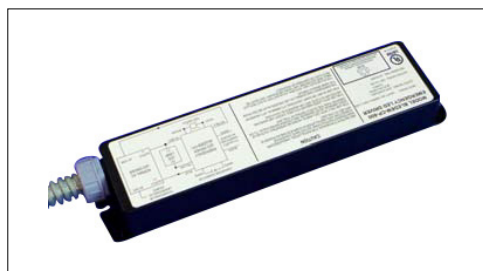
Illumination:

- Provides constant current (350 or 500 mA) output to the load during emergency mode operation.
- Can be operated as NORMALLY-ON, NORMALLY-OFF or SWITCHED LOAD.

Electrical:

- Universal 120-277V, 50/60 Hz input.
- Charge/Power "ON" LED indicator light and push-to-test switch for mandated code compliance testing.
- Long-life, maintenance free, rechargeable NiCad battery.
- Output short/over current protection: Electronic limiting, with normal operation resuming upon removal of fault.
- 90 Minute minimum emergency operating time over full temperature range.
- 24 Hour maximum battery recharge time.
- LED emergency driver is equipped with a switch to choose 350mA or 500mA constant current output.
- Output classification: Class 2 Compliant.
- Surge protection: Per C62.41 (TVS).
- Input overcurrent protection: Fusible link.

Constant-Power Emergency LED Driver



Illumination:

- Provides constant power output to the load during emergency mode operation.
- Can be operated as NORMALLY-ON, NORMALLY-OFF or SWITCHED LOAD.

Electrical:

- Universal 120-277V, 50/60 Hz input.
- Charge/Power "ON" LED indicator light and push-to-test switch for mandated code compliance testing.
- Long-life, maintenance free, rechargeable NiCad battery.
- Output short/over current protection: Electronic limiting, with normal operation resuming upon removal of fault.
- 90 Minute minimum emergency operating time over full temperature range.
- 24 Hour maximum battery recharge time.
- Output classification: Class 2 Compliant. (excludes -MV/-HV models).
- Surge protection: Per C62.41 (TVS).
- Input overcurrent protection: Fusible link.

Emergency Power Systems



Description:

Midsize-electrical inverter systems for powering up to 375 to 600 watts of incandescent, fluorescent, induction or LED lighting loads. Pulse width modulated (PWM) output design provides clean, 60 Hz. sinusoidal emergency power to loads.

- All models are designed for fast, easy wall mounting

Features:

- For powering incandescent, fluorescent, induction and LED fixtures *
- Sinusoidal output eliminates compatibility problems
- Universal 120/277VAC, 60Hz. input/output
- Unit capacities up to 600 watts
- "Soft Start" design reduces fixture inrush current
- Unit may be installed up to 1,000 feet from controlled fixture(s)
- Lumen output from fixture is 100% of nominal
- Unique design eliminates compatibility problems with LED drivers as well as fluorescent and induction ballasts
- Compatible with dimming ballasts
- Normally-ON and/or Normally-OFF load output
- Provisions for local switching capability - Always on during emergency conditions regardless of local switch position
- Emergency fixtures can be ON, OFF or SWITCHED

Emergency Power Systems



Description:

Midsize-electrical inverter systems for powering up to 750 to 1150 watts of incandescent, fluorescent, induction or LED lighting loads. Pulse width modulated (PWM) output design provides clean, 60 Hz. sinusoidal emergency power to loads.

- All models are designed for fast, easy wall mounting

Features:

- For powering incandescent, fluorescent, induction and LED fixtures *
- Sinusoidal output eliminates compatibility problems
- Universal 120/277VAC, 60Hz. input/output
- Unit capacities up to 1150 watts
- "Soft Start" design reduces fixture inrush current
- Unit may be installed up to 1,000 feet from controlled fixture(s)
- Lumen output from fixture is 100% of nominal
- Unique design eliminates compatibility problems with LED drivers as well as fluorescent and induction ballasts
- Compatible with dimming ballasts
- Normally-ON and/or Normally-OFF load output
- Provisions for local switching capability - Always on during emergency conditions regardless of local switch position
- Emergency fixtures can be ON, OFF or SWITCHED

Emergency Micro Power Systems



Description:

- LL-MPS Series inverter systems are designed to provide sinusoidal AC emergency power to connected incandescent, fluorescent or LED fixtures of between 20 and 55 watts.
- Surface, recessed or ceiling T-Grid mount models are designed for easy installation either on or near controlled fixtures. LL-MPS models support Normally-ON, Normally-OFF, switched operation or any combination thereof.

Electrical:

- For powering incandescent, fluorescent, and LED fixtures *
- True sinusoidal AC pulse width modulated (PWM) design provides clean 60Hz. emergency output
- Universal 120/277VAC, 60Hz. input/output
- Unit capacities of 20W to 55W
- "Soft Start" design reduces fixture inrush current
- Surface, recessed or T-Grid mount models
- Lumen output from fixture is 100% of nominal
- Unique design eliminates compatibility problems with LED drivers as well as fluorescent ballasts
- Normally-ON and/or Normally-OFF load output

Emergency Micro Power Systems



Description:

- Mini-electrical inverter systems for powering up to 220W/250VA of incandescent, fluorescent, induction or LED lighting loads. Pulse width modulated (PWM) output design provides clean, 60 Hz. sinusoidal emergency power to loads.
- Models are available for surface, recessed or T-Grid mounting as required

Features:

- For powering incandescent, fluorescent, induction and LED fixtures*
- Sinusoidal output eliminates compatibility problems
- Universal 120/277VAC, 60Hz. input/output
- Unit capacities up to 220W/250VA
- "Soft Start" design reduces fixture inrush current
- Unit may be installed up to 1,000 feet from controlled fixture(s)
- Surface, recessed or T-Grid mount models
- Lumen output from fixture is 100% of nominal
- Unique design eliminates compatibility problems with LED drivers as well as fluorescent and induction ballasts
- Compatible with dimming ballasts
- Normally-ON and/or Normally-OFF load output
- Provisions for local switching capability - Always on during emergency conditions regardless of local switch position

**For a digital version of this
catalog, scan below**



LITELUME™

PO Box 476, Everett WA 98206

T: 833.LED.LUME

info@litelume.com

www.litelume.com

©2023 LITELUME Corporation. All Rights reserved.



