



Round Tapered Steel Pole Made in USA - Virginia

LL-VA-RTS

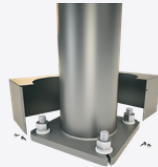
No Arm — 4-Bolt Base

Pole shaft shall be weldable-grade, hot-rolled, commercial quality carbon steel tubing conforming to ASTM A595 Grade A. Options include 11 gauge and 7 gauge. All welds shall conform to AWS D1.1 using ER70S-6 electrodes.



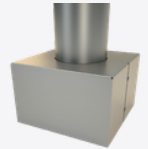
BASE STYLE

4-Bolt Steel Base Plate of fabricated hot rolled carbon steel conforming to ASTM A36 or equivalent (36 ksi minimum yield) with 2-piece Base Cover and attaching hardware. Base Cover will be fabricated from metal materials.



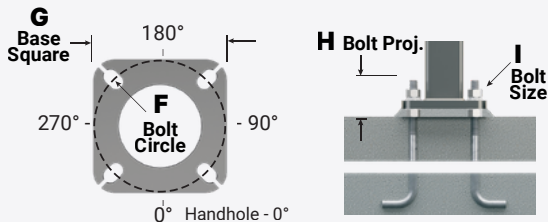
BASE COVER

Square Metal Powder Coated Base Covers are standard on all RTS poles.



ANCHORAGE

Anchorage Kit will include four (4) L-shaped Steel Anchor Bolts conforming to AASHTO M314-90 Grade 55. Ten inches (10") of threaded end will be galvanized per ASTM A153. Kits will contain eight (8) Hex Nuts, four (4) Lock Washers, and eight (8) Flat Washers (all components Galvanized Steel). A paper bolt circle template will be provided.



HANDHOLE

Up To 5.9" Butt Diameters - Reinforced, 3" x 5" Handhole with cover, stainless steel screw and backbar. A grounding provision incorporating a tapped 1/2"-13NC hole will be provided.

6"+ Butt Diameters - Reinforced, 4" x 6-1/2" Handhole with cover, stainless steel screw and backbar. A grounding provision incorporating a tapped 1/2"-13NC hole will be provided



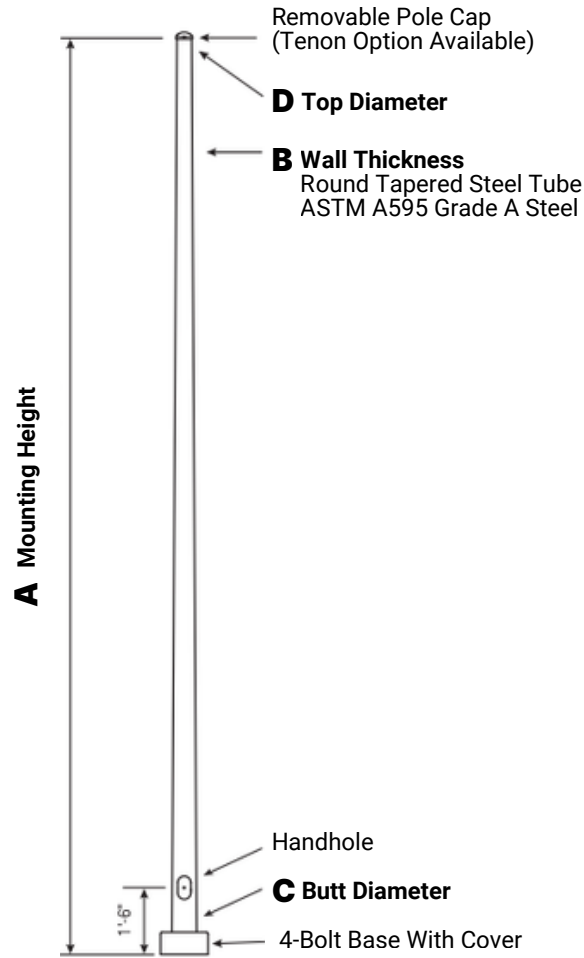
VIBRATION DAMPER

If determined necessary by LITELUME, or if specified by the customer, a first and/or second mode vibration damper will be provided.

WARNING: Do not install light pole without luminaire.



Round Tapered Steel Pole Made in USA - Virginia



Powder Coated, Galvanized or Powder Coated over Galvanized Finish Per Customer Specification

C	F	G	H	I
Butt Dia.	Bolt Cir. Dia.	Base SQ.	Bolt Proj.	Bolt Size
4.5	7.5 - 8.5	8	3.75	.75 x 17 x 3
5.2	8 - 9	8.5	3.75	.75 x 17 x 3
6.1 - 6.6	9.5 - 10.5	10	3.75	.75 x 30 x 3
6.8	10 - 11	10	3.75	.75 x 30 x 3
7.0* - 7.5	10.5 - 11.5	10.5	4.875	1 x 36 x 4
8.0	11 - 12	11	4.875	1 x 36 x 4
8.5	11.5 - 12.5	12	4.875	1 x 36 x 4
9.0 (11 Gauge)	12 - 13	12.375	4.875	1 x 36 x 4
9.0 (7 Gauge)	13 - 14	12.75	5.875	1.25 x 48 x 6
10	13.5 - 14.5	13	4.875	1 x 48 x 4
11	15 - 16	14	5.875	1.25 x 48 x 6
12	16 - 17	15.5	6.75	1.5 x 54 x 6

*Nominal

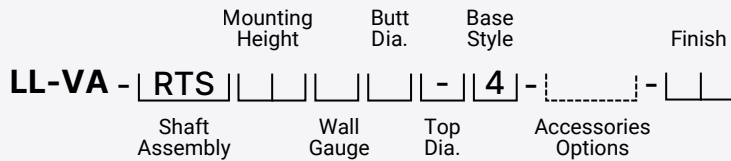
Dimensions in Inches



Round Tapered Steel Pole Made in USA - Virginia

CATALOG NUMBER SYSTEM

The catalog number for LITELUME poles utilizes the following identification system.



Catalog Number Example

LL-VA-RTS-30-B-8-4-DBZ

Round Tapered Steel, 30' Mounting Height, 11 Gauge, 8" Butt Diameter, Tapered, 4-Bolt Base, Dark Bronze Powder Coat Finish

A	B	C	D	TOTAL LUM. WEIGHT	MAXIMUM EPA						CATALOG NUMBER
					90	100	110	120	130	140	
MTG. HGT.	Wall Gauge	Butt Dia.	Top Dia.								
10	11	4.5	3.1	370	31.5	25.2	23.5	19.5	16.4	14.0	LL-VA-RTS-10-B-45-4-**
14	11	5.2	3.1	365	30.4	24.2	22.5	18.5	15.5	13.2	LL-VA-RTS-14-B-52-4-**
20	11	6.1	3.3	340	25.9	20.4	18.8	15.4	12.8	10.8	LL-VA-RTS-20-B-61-4-**
20	11	6.6	3.7	385	25.5	20.0	18.5	15.2	12.6	10.7	LL-VA-RTS-20-B-66-4-**
25	11	6.1	2.6	280	19.0	14.7	13.5	10.8	8.8	7.2	LL-VA-RTS-25-B-61-4-**
25	11	6.8	3.3	325	19.4	15.0	13.8	11.1	9.1	7.5	LL-VA-RTS-25-B-68-4-**
30	11	6.8	2.6	275	14.6	11.1	10.1	7.9	6.2	5.0	LL-VA-RTS-30-B-68-4-**
30	11	7.5	3.3	315	23.3	18.0	16.6	13.4	11.0	9.1	LL-VA-RTS-30-B-75-4-**
30	11	8	3.8	345	27.4	21.4	19.7	16.1	13.4	11.3	LL-VA-RTS-30-B-80-4-**
30	11	8.5	4.3	375	31.3	24.7	22.9	18.8	15.8	13.4	LL-VA-RTS-30-B-85-4-**
30	11	9	4.8	405	35.2	27.9	25.9	21.5	18.1	15.4	LL-VA-RTS-30-B-90-4-**
30	7	9	4.8	585	57.0	45.6	42.5	35.4	29.9	25.6	LL-VA-RTS-30-D-90-4-**
35	11	7.5	2.6	265	17.0	13.1	11.9	9.4	7.5	6.0	LL-VA-RTS-35-B-75-4-**
35	11	8	3.1	295	20.6	15.8	14.5	11.5	9.3	7.6	LL-VA-RTS-35-B-80-4-**
35	7	8.5	3.6	320	23.9	18.4	17.0	13.7	11.2	9.3	LL-VA-RTS-35-B-85-4-**
35	11	9	4.1	345	26.9	21.0	19.4	15.8	13.1	11.1	LL-VA-RTS-35-B-90-4-**
35	7	9	4.1	490	44.9	35.5	33.0	27.2	22.9	19.4	LL-VA-RTS-35-D-90-4-**

Continued on Next Page



Round Tapered Steel Pole Made in USA - Virginia

A	B	C	D	TOTAL LUM. WEIGHT	MAXIMUM EPA						CATALOG NUMBER
MTG. HGT.	Wall Gauge	Butt Dia.	Top Dia.		90	100	110	120	130	140	
39	11	8	2.5	260	15.8	12.1	11.1	8.7	6.8	5.4	LL-VA-RTS-39-B-80-4-**
39	11	9	3.5	305	21.9	16.8	15.4	12.3	10.0	8.2	LL-VA-RTS-39-B-90-4-**
39	7	9	3.5	425	36.6	28.8	26.7	21.9	18.2	15.4	LL-VA-RTS-39-D-90-4-**
39	11	10	4.5	350	25.4	19.8	18.2	14.9	12.4	10.4	LL-VA-RTS-39-B-10-4-**
39	7	11	5.5	600	53.7	43.0	40.0	33.2	27.8	23.6	LL-VA-RTS-39-D-11-4-**

2-Piece Shaft Design

A	B	C	D	TOTAL LUM. WEIGHT	MAXIMUM EPA						CATALOG NUMBER
MTG. HGT.	Wall Gauge	Butt Dia.	Top Dia.		90	100	110	120	130	140	
45	11	10	3.9	285	19.2	14.6	13.4	10.5	8.5	7.0	LL-VA-RTS-45-B-10-4-**
45	7	11	4.9	510	41.1	32.5	30.3	24.9	20.8	17.5	LL-VA-RTS-45-D-11-4-**
45	7	12	5.9	600	57.9	47.3	44.4	37.1	31.7	26.7	LL-VA-RTS-45-D-12-4-**
50	11	10	3.2	250	15.7	11.5	10.3	7.9	6.0	4.7	LL-VA-RTS-50-B-10-4-**
50	7	11	4.2	495	34.4	26.9	24.7	20.9	16.7	13.9	LL-VA-RTS-50-D-11-4-**
50	7	12	5.2	525	41.2	33.0	30.9	25.6	21.9	18.7	LL-VA-RTS-50-D-12-4-**

EPA Notes: Effective Projected Area (EPA) in square feet. EPA's calculated using wind velocity (mph) indicated in accordance with 2009 AASHTO LTS-5 using a 25-year design life. Maximum EPA is based on the luminaire weight shown. Increased luminaire weight may reduce the maximum EPA. If weight is exceeded, or if other design life or code is required, please consult the factory.

MOUNTING OPTIONS

Side Drill Mount

Includes removable pole cap.
NOTE: A luminaire drilling template must be supplied at time of order.

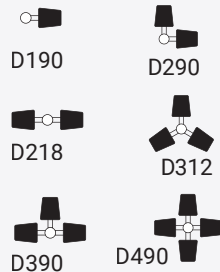


Tenon Mount

For Tenon Mount applications specify both Tenon diameter and length.



Drill Mount Options

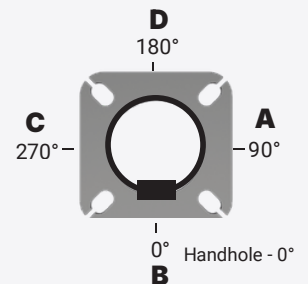


Electrical Box



NOTE: GFI Options must be specified in Accessories.

Pole Orientation





Round Tapered Steel Pole Made in USA - Virginia

PROJECT NAME	
CATALOG #	
JOB TYPE	
PREPARED BY	
NOTES	

ORDERING GUIDE

Brand	Location	Type		
LL LITELUME	VA Virginia	RTS Round Tapered Steel		
Height	Gauge	Butt Dia.	Top Dia.	Base Style
10 = 10' 14 = 14' 20 = 20' 25 = 25' 30 = 30' 35 = 35' 39 = 39' 45 = 45' 50 = 50'	B = 11 Gauge D = 7 Gauge	45 = 4.5" 52 = 5.2" 61 = 6.1" 66 = 6.6" 68 = 6.8" 75 = 7.5" 80 = 8" 85 = 8.5" 90 = 9" 10 = 10" 11 = 11" 12 = 12"	". " = No Taper	4 = 4-Bolt Base
Mounting Options	Electrical Box*	Accessories/Options*	Finish	
DRILL MOUNT D000 - No Drilling D190 - Std. "A" D290 - Std. "A" & "D" D218 - Std. "A" & "C" D390 - Std. "A", "D", & "C" D490 - Std. "A", "B", "C", & "D" DCUS - Custom* TENON T204 - 2-3/8" O.D. x 4" T304 - 2-7/8" O.D. x 4" T356 - 3-1/2" O.D. x 6" T406 - 4" O.D. x 6" TCUS - Custom Tenon** <i>* Specify Number and Orientation</i> <i>** Specify O.D. and Height</i>	FA - 30" Up, "D" FB - 30" Up, "B" FC - 30" Up, "A" FD - 30" Up, "C" FE - 36" Up, "D" FF - 36" Up, "B" FG - 36" Up, "A" FH - 36" Up, "C" FI - 24" Up, "D" FK - 24" Up, "A" FL - 24" Up, "C" FZ - Custom** <i>* GFI Receptacle Options Available (Specify in Accessories)</i> <i>** Specify Height and Orientation</i>	C12 - Threaded 1/2" Coupling** C34 - Threaded 3/4" Coupling** C10 - Threaded 1" Coupling** EHH - Extra Handhole** GF1 - Duplex GFI Receptacle (WR) with Cover GF2 - Duplex GFI (WR) with In-Use Cover LAB - Less Anchor Bolts LPC - Less Pole Cap PAB - Pre-Shipped Anchor Bolts VD2 - Vib. Damper - 2 nd Mode <i>* Add all that apply (Example: LPC-LAB-VD2)</i> <i>** Specify Location</i>	POWDER COAT COLORS BK - Black Powder Coat WH - White Powder Coat DBZ - Dark Bronze Powder Coat DGR - Dark Green Powder Coat GY - Gray Powder Coat CUS - Custom Color* GALVANIZED 1Q - Galvanized Only 1C - Black PC Over Galv. 1D - White PC Over Galv. 1B - D. Bronze PC Over Galv. 1Y - D. Green PC Over Galv. 1J - Gray PC Over Galv. XX - Special PC Over Galv.* <i>* Provide RAL # or Sample Color Chip</i>	