



Round Straight Steel Pole Made in USA - Virginia

LL-VA-RSS

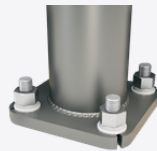
No Arm — 4-Bolt Base

Pole shaft shall be weldable-grade, cold-rolled, commercial quality carbon steel tubing conforming to ASTM A500 Grade B. Options include 11 gauge and 7 gauge. All welds shall conform to AWS D1.1 using ER70S-6 electrodes.



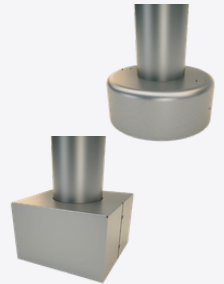
BASE STYLE

4-Bolt Steel Base Plate of fabricated hot rolled carbon steel conforming to ASTM A36 or equivalent (36 ksi minimum yield) with 2-piece Base Cover and attaching hardware.



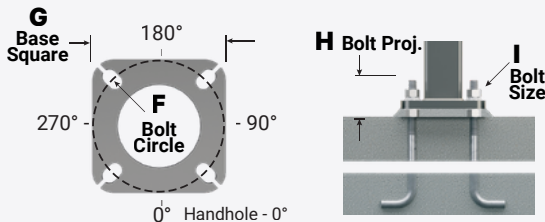
BASE COVER

Round ABS Plastic Base Covers are standard in all 11 Gauge RSS poles specified in powder coat finishes BK-Black, DBZ-Dark Bronze and WH-White. **Square Metal Powder Coated Base Covers** are standard in all 11 Gauge RSS poles that are specified in colors other than BK, DBZ, and WH and in all 7 Gauge poles in ALL COLORS. Custom specification of RSS Square Metal style Base Covers in BK, DBZ and WH powder coated finishes is available.



ANCHORAGE

Anchorage Kit will include four (4) L-shaped Steel Anchor Bolts conforming to AASHTO M314-90 Grade 55. Ten inches (10") of threaded end will be galvanized per ASTM A153. Kits will contain eight (8) Hex Nuts, four (4) Lock Washers, and eight (8) Flat Washers (all components Galvanized Steel). A paper bolt circle template will be provided.



HANDHOLE

3" Butt Diameter - Reinforced, 2" x 4" Handhole with cover and stainless steel screws. A grounding provision incorporating a tapped 1/2"-13NC hole will be provided. **4"+ Butt Diameters** - Reinforced, 3" x 5" Handhole with cover, stainless steel screw and backbar. A grounding provision incorporating a tapped 1/2"-13NC hole will be provided.



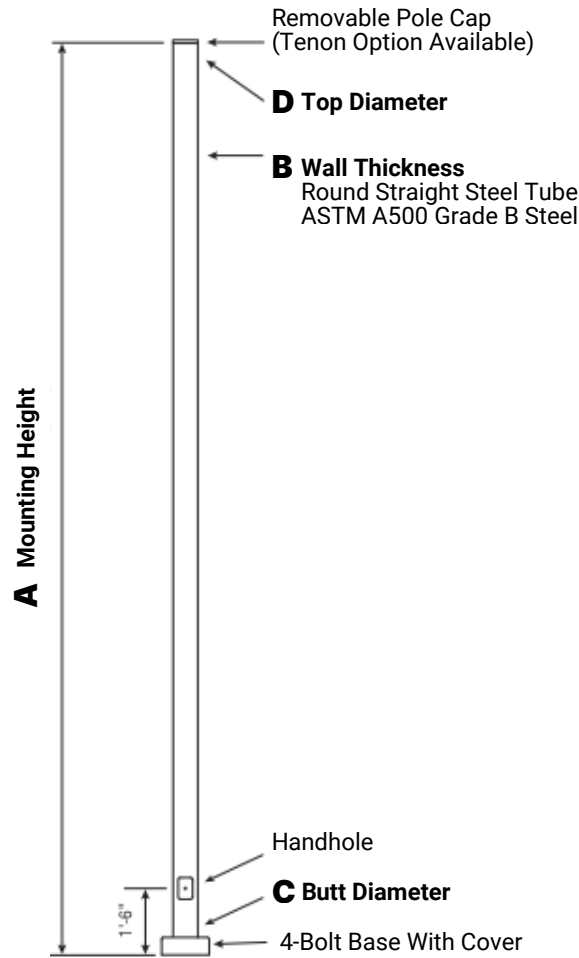
VIBRATION DAMPER

If determined necessary by LITELUME, or if specified by the customer, a first and/or second mode vibration damper will be provided.

WARNING: Do not install light pole without luminaire.



Round Straight Steel Pole Made in USA - Virginia



Powder Coated, Galvanized or Powder Coated over Galvanized Finish Per Customer Specification

C	D	F	G	H	I
Butt Dia.	Top Dia.	Bolt Cir. Dia.	Base SQ.	Bolt Proj.	Bolt Size
3	3	7.5 - 8.5	8	3.75	.75 x 17 x 3
4	4	7.5 - 8.5	8	3.75	.75 x 17 x 3
4.5	4.5	7.5 - 8.5	8	3.75	.75 x 17 x 3
5 (11 Gauge)	5	7.5 - 8.5	8	3.75	.75 x 17 x 3
5 (7 Gauge)	5	8 - 9	8.75	4.875	1 x 36 x 4

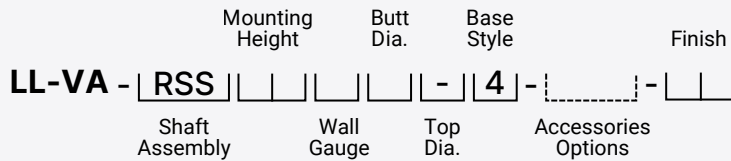
Dimensions in Inches



Round Straight Steel Pole Made in USA - Virginia

CATALOG NUMBER SYSTEM

The catalog number for LITELUME poles utilizes the following identification system.



Catalog Number Example

LL-VA-RSS-20-B-4-4-WH

Round Straight Steel, 20' Mounting Height, 11 Gauge, 4" Butt Diameter, No Taper, 4-Bolt Base, White Powder Coat Finish.

A	B	C	TOTAL LUM. WEIGHT	MAXIMUM EPA						CATALOG NUMBER
				90	100	110	120	130	140	
MTG. HGT.	Wall Gauge	Butt Dia.								
8	11	3	525	10.1	8.0	7.4	6.1	5.0	4.2	LL-VA-RSS-08-B-3-4-**-
8	11	4	600	21.4	17.1	15.9	13.1	11.0	9.4	LL-VA-RSS-08-B-4-4-**-
10	11	3	435	8.1	6.3	5.8	4.7	3.8	3.1	LL-VA-RSS-10-B-3-4-**-
10	11	4	600	16.7	13.2	12.2	10.0	8.3	7.0	LL-VA-RSS-10-B-4-4-**-
10	11	4.5	600	22.4	17.8	16.5	13.6	11.5	9.9	LL-VA-RSS-10-B-G-4-**-
12	11	3	370	6.4	4.9	4.5	3.5	2.8	2.2	LL-VA-RSS-12-B-3-4-**-
12	11	4	600	13.2	10.3	9.5	7.7	6.3	5.2	LL-VA-RSS-12-B-4-4-**-
12	11	4.5	600	18.1	14.2	13.1	10.7	9.0	7.7	LL-VA-RSS-12-B-G-4-**-
14	11	3	315	5.1	3.8	3.4	2.6	1.9	1.4	LL-VA-RSS-14-B-3-4-**-
14	11	4	550	10.7	8.3	7.6	6.0	4.7	3.9	LL-VA-RSS-14-B-4-4-**-
14	11	4.5	600	14.7	11.4	10.5	8.4	7.0	6.0	LL-VA-RSS-14-B-G-4-**-
16	11	3	275	3.9	2.8	2.5	1.8	1.2	0.7	LL-VA-RSS-16-B-3-4-**-
16	11	4	470	8.8	6.6	6.0	4.6	3.5	2.8	LL-VA-RSS-16-B-4-4-**-
16	11	4.5	595	11.9	9.0	8.2	6.5	5.4	4.5	LL-VA-RSS-16-B-G-4-**-
18	11	3	245	2.9	1.9	1.6	1.0	-	-	LL-VA-RSS-18-B-3-4-**-
18	11	4	400	7.1	5.2	4.6	3.4	2.5	1.9	LL-VA-RSS-18-B-4-4-**-
18	11	4.5	505	9.7	7.2	6.5	5.0	4.1	3.4	LL-VA-RSS-18-B-G-4-**-

Continued on Next Page



Round Straight Steel Pole Made in USA - Virginia

A	B	C	TOTAL LUM. WEIGHT	MAXIMUM EPA						CATALOG NUMBER
				90	100	110	120	130	140	
20	11	3	225	2.0	1.1	0.9	-	-	-	LL-VA-RSS-20-B-3-4-**
20	11	4	340	5.6	3.9	3.5	2.4	1.5	1.1	LL-VA-RSS-20-B-4-4-**
20	11	4.5	430	7.9	5.7	5.1	3.7	3.0	2.4	LL-VA-RSS-20-B-G-4-**
20	11	5	540	10.5	7.7	7.1	5.7	4.7	3.9	LL-VA-RSS-20-B-5-4-**
20	7	5	600	17.7	13.5	12.5	10.3	8.6	7.3	LL-VA-RSS-20-D-5-4-**
22	11	4.5	370	6.3	4.4	3.8	2.6	2.0	1.6	LL-VA-RSS-22-B-G-4-**
22	11	5	460	8.6	6.1	5.6	4.5	3.6	3.0	LL-VA-RSS-22-B-5-4-**
22	7	5	600	13.4	9.9	9.2	7.5	6.2	5.1	LL-VA-RSS-22-D-5-4-**
25	11	4	240	2.8	1.5	1.1	-	-	-	LL-VA-RSS-25-B-4-4-**
25	11	4.5	290	4.4	2.7	2.2	1.2	0.8	-	LL-VA-RSS-25-B-G-4-**
25	11	5	365	6.2	4.1	3.7	2.8	2.2	1.7	LL-VA-RSS-25-B-5-4-**
25	7	5	565	11.1	8.0	7.4	5.9	4.8	4.0	LL-VA-RSS-25-D-5-4-**
30	11	4.5	205	1.7	-	-	-	-	-	LL-VA-RSS-30-B-G-4-**
30	11	5	245	3.1	1.3	1.1	0.6	-	-	LL-VA-RSS-30-B-5-4-**
30	7	5	395	7.0	4.5	4.0	3.1	2.4	1.8	LL-VA-RSS-30-D-5-4-**
35	7	5	270	3.8	1.7	1.4	0.8	-	-	LL-VA-RSS-35-D-5-4-**

EPA Notes: Effective Projected Area (EPA) in square feet. EPA's calculated using wind velocity (mph) indicated in accordance with 2009 AASHTO LTS-5 using a 25-year design life. Maximum EPA is based on the luminaire weight shown. Increased luminaire weight may reduce the maximum EPA. If weight is exceeded, or if other design life or code is required, please consult the factory.

MOUNTING OPTIONS

Side Drill Mount

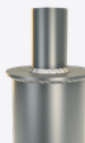
Includes removable pole cap.

NOTE: A luminaire drilling template must be supplied at time of order.

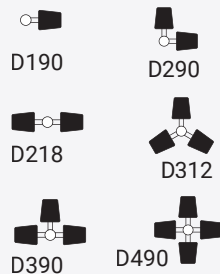


Tenon Mount

For Tenon Mount applications specify both Tenon diameter and length.



Drill Mount Options



Electrical Box



Box Only



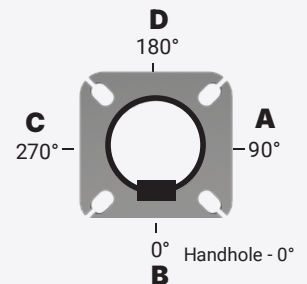
GF1
Duplex GFI Receptacle with Cover



GF2
Duplex GFI with In-Use Cover

NOTE: GFI Options must be specified in Accessories. Not Available in 3" Diameter.

Pole Orientation





Round Straight Steel Pole Made in USA - Virginia

PROJECT NAME	
CATALOG #	
JOB TYPE	
PREPARED BY	
NOTES	

ORDERING GUIDE

Brand	Location	Type		
LL LITELUME	VA Virginia	RSS Round Straight Steel		
Height	Gauge	Butt Dia.	Top Dia.	Base Style
8 = 8' 10 = 10' 12 = 12' 14 = 14' 16 = 16' 18 = 18' 20 = 20' 22 = 22' 25 = 25' 30 = 30' 35 = 35'	B = 11 Gauge D = 7 Gauge	3 = 3" 4 = 4" G = 4.5" 5 = 5"	". " = No Taper	4 = 4-Bolt Base
Mounting Options	Electrical Box*	Accessories/Options*	Finish	
DRILL MOUNT D000 - No Drilling D190 - Std. "A" D290 - Std. "A" & "D" D218 - Std. "A" & "C" D390 - Std. "A", "D", & "C" D490 - Std. "A", "B", "C", & "D" DCUS - Custom* TENON T204 - 2-3/8" O.D. x 4" T304 - 2-7/8" O.D. x 4" T356 - 3-1/2" O.D. x 6" T406 - 4" O.D. x 6" TCUS - Custom Tenon** <i>* Specify Number and Orientation</i> <i>** Specify O.D. and Height</i>	FA - 30" Up, "D" FB - 30" Up, "B" FC - 30" Up, "A" FD - 30" Up, "C" FE - 36" Up, "D" FF - 36" Up, "B" FG - 36" Up, "A" FH - 36" Up, "C" FI - 24" Up, "D" FK - 24" Up, "A" FL - 24" Up, "C" FZ - Custom** <i>* GFI Receptacle Options Available (Specify in Accessories)</i> <i>** Specify Height and Orientation</i>	C12 - Threaded 1/2" Coupling** C34 - Threaded 3/4" Coupling** C10 - Threaded 1" Coupling** EHH - Extra Handhole** GF1 - Duplex GFI Receptacle (WR) with Cover GF2 - Duplex GFI (WR) with In-Use Cover LAB - Less Anchor Bolts LPC - Less Pole Cap PAB - Pre-Shipped Anchor Bolts VD2 - Vib. Damper - 2 nd Mode <i>* Add all that apply (Example: LPC-LAB-VD2)</i> <i>** Specify Location</i>	POWDER COAT COLORS BK - Black Powder Coat WH - White Powder Coat DBZ - Dark Bronze Powder Coat DGR - Dark Green Powder Coat GY - Gray Powder Coat CUS - Custom Color* GALVANIZED 1Q - Galvanized Only 1C - Black PC Over Galv. 1D - White PC Over Galv. 1B - D. Bronze PC Over Galv. 1Y - D. Green PC Over Galv. 1J - Gray PC Over Galv. XX - Special PC Over Galv.* <i>* Provide RAL # or Sample Color Chip</i>	