



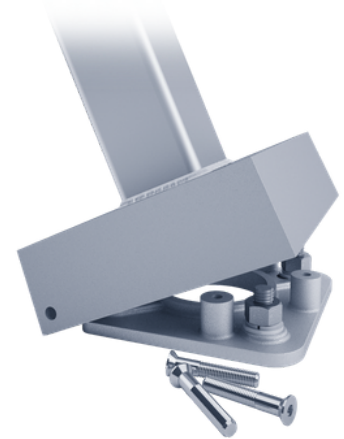
Square Straight Aluminum Pole Hinged Base

Made in USA - Virginia

LL-VA-SSA-H

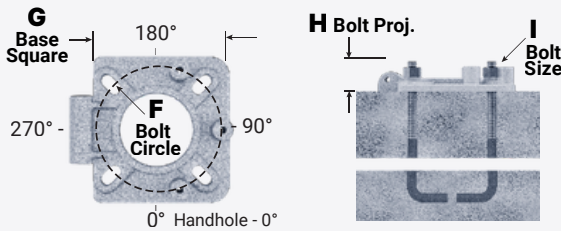
Square Straight Aluminum Pole Hinged Base

The pole shaft will be constructed of seamless extruded tube of 6063 Series Aluminum Alloy per the requirements of ASTM B221. The shaft assembly shall be full-length heat treated after base weld. 4-Bolt Cast Aluminum Base Flange of Alloy 356-T6 with three (3) Stainless Steel Tamper-Resistant Attaching Screws.



ANCHORAGE

Anchorage Kit will include four (4) L-shaped Steel Anchor Bolts conforming to AASHTO M314-90 Grade 55. Ten inches (10") of threaded end will be galvanized per ASTM A153. Kits will contain four (4) Hex Nuts, four (4) Lock Washers, and four (4) Flat Washers (all components Galvanized Steel). A bolt circle template will be provided.



HANDHOLE

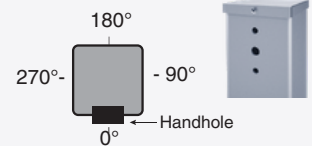
4"-5" Butt Squares - 2" x 4" Handhole with square Lap Style Aluminum Door and two (2) Stainless Steel Self-Tapping Attaching Screws. A Grounding Provision incorporating a tapped 1/4"-20NC Grounding Provision is provided.



MOUNTING DESIGNATION

Side Drill Mount Applications

Specify luminaire type, quantity and orientation. A luminaire drilling template must be supplied at time of order.



VIBRATION DAMPER

When determined necessary by LITELUME, a Vibration Damper will be factory-installed inside the pole shaft. Customer specification of the damper is available.

Tenon Mount Applications

Specify both Tenon diameter (2.375", 2.875", 3.5", etc.) and length (3", 4", etc.).

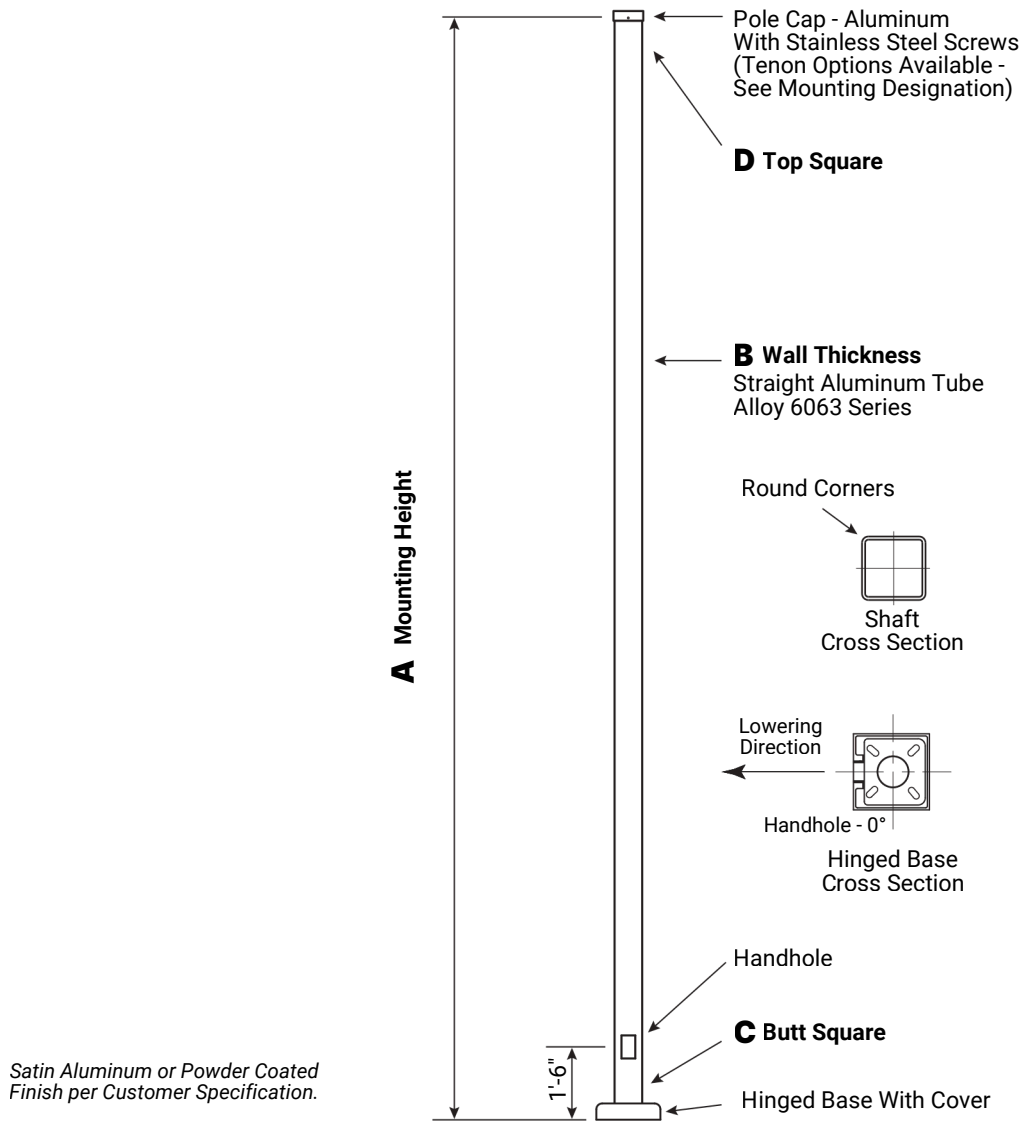


WARNING: Do not install light pole without luminaire.



Square Straight Aluminum Pole Hinged Base

Made in USA - Virginia



C	D	F	G	H	I
Butt SQ.	Top SQ.	Bolt Cir. Dia.	Base SQ.	Bolt Proj.	Bolt Size
4	4	7.5 - 9	10.75	2	.75 x 17 x 3
5	5	9	10.75	2	.75 x 30 x 3

Dimensions in Inches

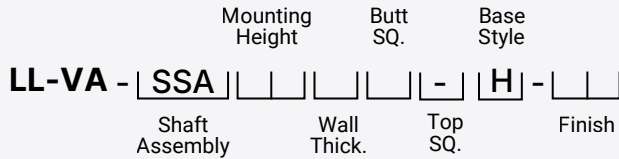


Square Straight Aluminum Pole Hinged Base

Made in USA - Virginia

CATALOG NUMBER SYSTEM

The catalog number for LITELUME poles utilizes the following identification system.



Catalog Number Example

LL-VA-SSA-20-D-5-H-BK

Square Straight Aluminum, 20' Mounting Height, .188" Wall Thickness, 5" Butt Square, No Taper, Hinged Base, Black Powder Coat Finish.

A MTG. HGT.	B Wall Thickness	C Butt SQ.	TOTAL LUM. WEIGHT	MAXIMUM EPA					CATALOG NUMBER
				90	100	110	120	130	
8	0.125	4	100	19.9	15.8	14.6	12.0	10.0	LL-VA-SSA-08-B-4-H-**
10	0.125	4	100	15.2	11.9	11.0	8.8	7.2	LL-VA-SSA-10-B-4-H-**
	0.188	5	100	26.0	20.5	19.0	15.4	12.7	LL-VA-SSA-10-D-5-H-**
12	0.125	4	100	11.8	9.1	8.4	6.6	5.2	LL-VA-SSA-12-B-4-H-**
	0.188	5	100	20.6	16.0	14.7	11.8	9.5	LL-VA-SSA-12-D-5-H-**
14	0.125	4	70	9.4	7.0	6.4	4.9	3.7	LL-VA-SSA-14-B-4-H-**
	0.188	5	100	16.6	12.6	11.5	9.0	7.0	LL-VA-SSA-14-D-5-H-**
15	0.125	4	55	8.4	6.2	5.6	4.2	3.0	LL-VA-SSA-15-B-4-H-**
	0.188	5	100	14.9	11.2	10.2	7.8	6.0	LL-VA-SSA-15-D-5-H-**
16	0.125	4	40	7.4	5.4	4.8	3.5	2.4	LL-VA-SSA-16-B-4-H-**
	0.188	4	100	7.4	5.4	4.8	3.5	2.4	LL-VA-SSA-16-D-4-H-**
	0.188	5	100	13.4	10.0	9.0	6.8	5.1	LL-VA-SSA-16-D-5-H-**
18	0.125	4	35	5.7	3.9	3.4	2.2	1.4	LL-VA-SSA-18-B-4-H-**
	0.188	4	100	5.7	3.9	3.4	2.2	1.4	LL-VA-SSA-18-D-4-H-**
	0.188	5	100	10.6	7.6	6.7	4.8	3.4	LL-VA-SSA-18-D-5-H-**
20	0.188	5	100	8.2	5.6	4.8	3.2	1.8	LL-VA-SSA-20-D-5-H-**

EPA Notes: Effective Projected Area (EPA) in square feet. EPA's calculated using wind velocity (mph) indicated in accordance with 2009 AASHTO LTS-5 using a 25 year design life. Maximum EPA is based on the luminaire weight shown. Increased luminaire weight may reduce the maximum EPA. If weight is exceeded, or if other design life or code is required, please consult the factory.



Square Straight Aluminum Pole Hinged Base

Made in USA - Virginia

PROJECT NAME	
CATALOG #	
JOB TYPE	
PREPARED BY	
NOTES	

ORDERING GUIDE

Brand	Location	Shaft Style	Height
LL LITELUME	VA Virginia	SSA Square Straight Aluminum	8 = 8' 10 = 10' 12 = 12' 14 = 14' 15 = 15' 16 = 16' 18 = 18' 20 = 20'

Wall Thick.	Butt SQ.	Top SQ.	Base Style	Mounting Options	Finish
B = .125" D = .188"	4 = 4" 5 = 5"	- = No Taper	H = Hinged Base	<p>DRILL MOUNT D000 - No Drilling D190 - Std. "A" D290 - Std. "A" & "D" D218 - Std. "A" & "C" D390 - Std. "A", "D", & "C" D490 - Std. "A", "B", "C", & "D" DCUS - Custom*</p> <p>TENON T204 - 2-3/8" O.D. x 4" T304 - 2-7/8" O.D. x 4" T356 - 3-1/2" O.D. x 6" T406 - 4" O.D. x 6" TCUS - Custom Tenon**</p> <p>* Specify Number and Orientation ** Specify O.D. and Height</p>	<p>SA - Satin Aluminum BK - Black Powder Coat WH - White Powder Coat DBZ - Dark Bronze Powder Coat DGR - Dark Green Powder Coat GY - Gray Powder Coat ** - Specify Finish</p>