



# Square Straight Steel Pole Made in USA - Virginia

## LL-VA-SSS

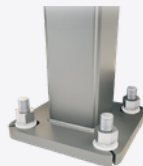
### No Arm — 4-Bolt Base

Pole shaft shall be weldable-grade, cold-rolled, commercial quality carbon steel tubing conforming to ASTM A500 Grade B. Options include 11 gauge and 7 gauge. All welds shall conform to AWS D1.1 using ER70S-6 electrodes.



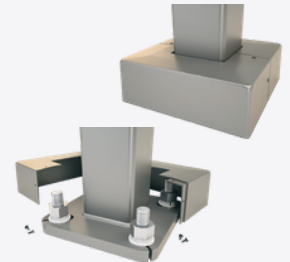
#### BASE STYLE

4-Bolt Steel Plate Base Flange of fabricated hot rolled carbon steel conforming to ASTM A36 or equivalent (36 ksi minimum yield) with 2-piece Base Cover and attaching hardware.



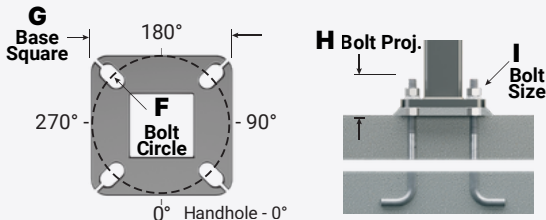
#### BASE COVER

Square ABS plastic Base Covers are standard on all SSS poles specified in BK-Black, DBZ-Dark Bronze and WH-White. SSS poles specified in all other colors will be manufactured of metal materials. Custom specification of SSS square metal style Base Covers in BK, WH and DBZ powder coated finishes is available.



#### ANCHORAGE

Anchorage Kit will include four (4) L-shaped Steel Anchor Bolts conforming to AASHTO M314-90 Grade 55. Ten inches (10") of threaded end will be galvanized per ASTM A153. Kits will contain eight (8) Hex Nuts, four (4) Lock Washers, and eight (8) Flat Washers (all components Galvanized Steel). A paper bolt circle template will be provided.



#### HANDHOLE

Reinforced, 3" x 5" Handhole with cover, stainless steel screw and backbar. A grounding provision incorporating a tapped 1/2"-13NC hole will be provided.



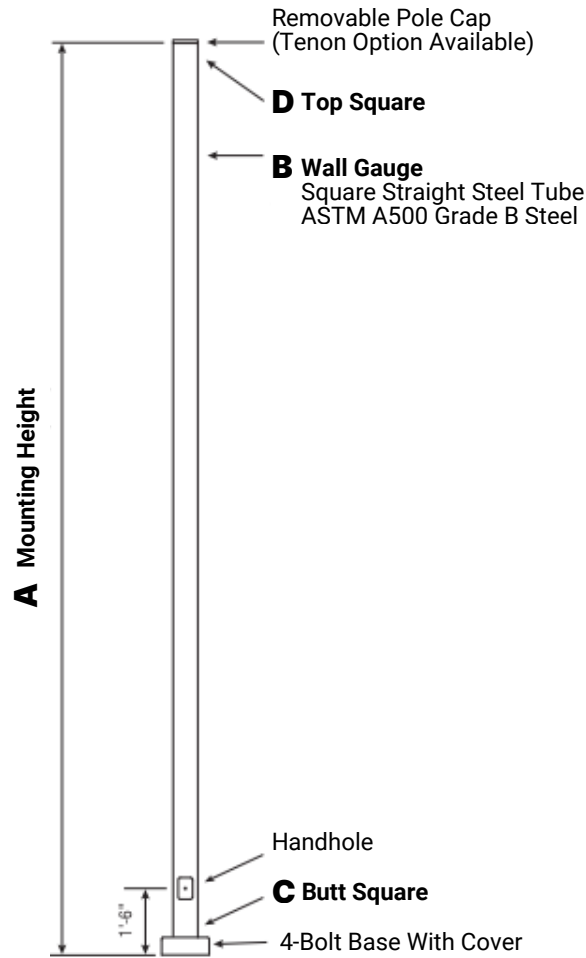
#### VIBRATION DAMPER

If determined necessary by LITELUME, or if specified by the customer, a first and/or second mode vibration damper will be provided.

**WARNING:** Do not install light pole without luminaire.



# Square Straight Steel Pole Made in USA - Virginia



*Powder Coated, Galvanized or Powder Coated over Galvanized Finish Per Customer Specification*

C	D	F	G	H	I
Butt SQ.	Top SQ.	Bolt Cir. Dia.	Base SQ.	Bolt Proj.	Bolt Size
4 (11 Gauge)	4	8 - 9	8	3.75	.75 x 17 x 3
4 (7 Gauge)	4	8 - 9	8	3.75	.75 x 30 x 3
5 (11 Gauge)*	5	10 - 12	11	3.75	.75 x 30 x 3
5 (7 Gauge)	5	10 - 12	11	4.875	1 x 36 x 4
6	6	11 - 13	12.5	4.875	1 x 36 x 4

\*Requires the use of oversized washers (provided).

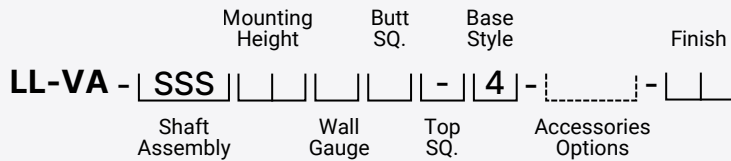
*Dimensions in Inches*



# Square Straight Steel Pole Made in USA - Virginia

## CATALOG NUMBER SYSTEM

The catalog number for LITELUME poles utilizes the following identification system.



### Catalog Number Example

**LL-VA-SSS-20-D-5-4-BK**

Square Straight Steel, 20' Mounting Height, 7 Gauge, 5" Butt Square, No Taper, 4-Bolt Base, Black Powder Coat Finish.

A	B	C	TOTAL LUM. WEIGHT	MAXIMUM EPA						CATALOG NUMBER
				90	100	110	120	130	140	
MTG. HGT.	Wall Gauge	Butt SQ.								
10	11	4	320	25.2	20.0	18.6	15.3	12.7	10.6	LL-VA-SSS-10-B-4-4-**
12	11	4	285	20.6	16.2	14.9	12.1	9.9	8.2	LL-VA-SSS-12-B-4-4-**
14	11	4	255	17.0	13.2	12.1	9.7	7.8	6.3	LL-VA-SSS-14-B-4-4-**
15	11	4	245	15.5	11.9	10.9	8.6	6.8	5.4	LL-VA-SSS-15-B-4-4-**
15	7	4	305	23.4	18.4	17.0	13.8	11.4	9.4	LL-VA-SSS-15-D-4-4-**
16	11	4	235	14.0	10.7	9.7	7.6	5.9	4.6	LL-VA-SSS-16-B-4-4-**
16	7	4	290	21.5	16.8	15.5	12.5	10.2	8.4	LL-VA-SSS-16-D-4-4-**
18	11	4	215	11.3	8.4	7.6	5.7	4.3	3.2	LL-VA-SSS-18-B-4-4-**
18	7	4	265	18.0	13.9	12.8	10.2	8.2	6.6	LL-VA-SSS-18-D-4-4-**
20	11	4	200	9.1	6.5	5.8	4.2	2.9	1.9	LL-VA-SSS-20-B-4-4-**
20	11	5	235	14.1	10.3	9.2	6.8	4.9	3.4	LL-VA-SSS-20-B-5-4-**
20	7	4	240	15.1	11.5	10.5	8.2	6.5	5.0	LL-VA-SSS-20-D-4-4-**
20	7	5	330	26.3	20.3	18.6	14.8	11.9	9.6	LL-VA-SSS-20-D-5-4-**
22	11	4	200	7.2	4.9	4.2	2.8	1.7	0.8	LL-VA-SSS-22-B-4-4-**
22	11	5	215	11.4	8.0	7.1	4.9	3.2	1.9	LL-VA-SSS-22-B-5-4-**
22	7	4	225	12.7	9.5	8.6	6.6	5.0	3.7	LL-VA-SSS-22-D-4-4-**
22	7	5	300	22.4	17.1	15.6	12.2	9.6	7.5	LL-VA-SSS-22-D-5-4-**

Continued on Next Page



# Square Straight Steel Pole Made in USA - Virginia

A	B	C	TOTAL LUM. WEIGHT	MAXIMUM EPA						CATALOG NUMBER
				90	100	110	120	130	140	
MTG. HGT.	Wall Gauge	Butt SQ.								
25	11	4	200	4.7	2.8	2.2	1.0	-	-	LL-VA-SSS-25-B-4-4-**
25	11	5	200	8.0	5.1	4.3	2.4	1.0	-	LL-VA-SSS-25-B-5-4-**
25	7	4	205	9.7	6.9	6.2	4.4	3.1	2.0	LL-VA-SSS-25-D-4-4-**
25	7	5	260	17.7	13.2	11.9	9.0	6.7	4.9	LL-VA-SSS-25-D-5-4-**
28	11	4	200	2.6	1.0	-	-	-	-	LL-VA-SSS-28-B-4-4-**
28	11	5	200	5.1	2.6	1.9	-	-	-	LL-VA-SSS-28-B-5-4-**
28	7	4	200	7.1	4.8	4.1	2.6	1.5	-	LL-VA-SSS-28-D-4-4-**
28	7	5	235	13.9	9.9	8.8	6.3	4.3	2.7	LL-VA-SSS-28-D-5-4-**
30	11	5	200	3.4	1.1	-	-	-	-	LL-VA-SSS-30-B-5-4-**
30	7	4	200	5.6	3.5	2.9	1.6	-	-	LL-VA-SSS-30-D-4-4-**
30	7	5	215	11.7	8.0	7.0	4.7	2.9	1.5	LL-VA-SSS-30-D-5-4-**
30	7	6	275	19.2	13.7	12.2	8.7	5.9	3.8	LL-VA-SSS-30-D-6-4-**
35	7	5	200	6.9	4.0	3.1	1.2	-	-	LL-VA-SSS-35-D-5-4-**
35	7	6	220	12.6	8.0	6.8	3.9	1.6	-	LL-VA-SSS-35-D-6-4-**
39	7	6	200	8.2	4.2	3.1	0.6	-	-	LL-VA-SSS-39-D-6-4-**

**EPA Notes:** Effective Projected Area (EPA) in square feet. EPA's calculated using wind velocity (mph) indicated in accordance with 2009 AASHTO LTS-5 using a 25-year design life. Maximum EPA is based on the luminaire weight shown. Increased luminaire weight may reduce the maximum EPA. If weight is exceeded, or if other design life or code is required, please consult the factory.

## MOUNTING OPTIONS

### Side Drill Mount

Includes removable pole cap.

**NOTE:** A luminaire drilling template must be supplied at time of order.

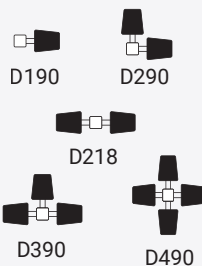


### Tenon Mount

For Tenon Mount applications specify both Tenon diameter and length.



### Drill Mount Options



### Electrical Box



Box Only



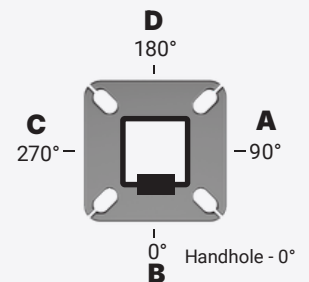
GF1  
Duplex GFI Receptacle with Cover



GF2  
Duplex GFI with In-Use Cover

**NOTE:** GFI Options must be specified in Accessories.

### Pole Orientation





# Square Straight Steel Pole Made in USA - Virginia

PROJECT NAME	
CATALOG #	
JOB TYPE	
PREPARED BY	
NOTES	

## ORDERING GUIDE

Brand	Location	Type		
LL LITELUME	VA Virginia	SSS Square Straight Steel		
Height	Gauge	Butt SQ.	Top SQ.	Base Style
10 = 10' 12 = 12' 14 = 14' 16 = 16' 18 = 18' 20 = 20' 22 = 22' 25 = 25' 28 = 28' 30 = 30' 35 = 35' 39 = 39'	B = 11 Gauge D = 7 Gauge	4 = 4" 5 = 5" 6 = 6"	". " = No Taper	4 = 4-Bolt Base

Mounting Options	Electrical Box*	Accessories/Options*	Finish
<p><b>DRILL MOUNT</b>  <b>D000</b> - No Drilling  <b>D190</b> - Std. "A"  <b>D290</b> - Std. "A" &amp; "D"  <b>D218</b> - Std. "A" &amp; "C"  <b>D390</b> - Std. "A", "D", &amp; "C"  <b>D490</b> - Std. "A", "B", "C", &amp; "D"  <b>DCUS</b> - Custom*</p> <p><b>TENON</b>  <b>T204</b> - 2-3/8" O.D. x 4"  <b>T304</b> - 2-7/8" O.D. x 4"  <b>T356</b> - 3-1/2" O.D. x 6"  <b>T406</b> - 4" O.D. x 6"  <b>TCUS</b> - Custom Tenon**</p> <p>* Specify Number and Orientation            ** Specify O.D. and Height</p>	<p>FA - 30" Up, "D"            FB - 30" Up, "B"            FC - 30" Up, "A"            FD - 30" Up, "C"            FE - 36" Up, "D"            FF - 36" Up, "B"            FG - 36" Up, "A"            FH - 36" Up, "C"            FI - 24" Up, "D"            FK - 24" Up, "A"            FL - 24" Up, "C"            FZ - Custom**</p> <p>* GFI Receptacle Options Available (Specify in Accessories)            ** Specify Height and Orientation</p>	<p><b>C12</b> - Threaded 1/2" Coupling**  <b>C34</b> - Threaded 3/4" Coupling**  <b>C10</b> - Threaded 1" Coupling**  <b>EHH</b> - Extra Handhole**  <b>GF1</b> - Duplex GFI Receptacle (WR) with Cover  <b>GF2</b> - Duplex GFI (WR) with In-Use Cover  <b>LAB</b> - Less Anchor Bolts  <b>LPC</b> - Less Pole Cap  <b>PAB</b> - Pre-Shipped Anchor Bolts  <b>VD1</b> - Vib. Damper - 1<sup>st</sup> Mode  <b>VD2</b> - Vib. Damper - 2<sup>nd</sup> Mode</p> <p>* Add all that apply (Example: LPC-LAB-VD1)            ** Specify Location</p>	<p><b>POWDER COAT COLORS</b>  <b>BK</b> - Black Powder Coat  <b>WH</b> - White Powder Coat  <b>DBZ</b> - Dark Bronze Powder Coat  <b>DGR</b> - Dark Green Powder Coat  <b>GY</b> - Gray Powder Coat  <b>CUS</b> - Custom Color*</p> <p><b>GALVANIZED</b>  <b>1Q</b> - Galvanized Only  <b>1C</b> - Black PC Over Galv.  <b>1D</b> - White PC Over Galv.  <b>1B</b> - D. Bronze PC Over Galv.  <b>1Y</b> - D. Green PC Over Galv.  <b>1J</b> - Gray PC Over Galv.  <b>XX</b> - Special PC Over Galv.*</p> <p>* Provide RAL # or Sample Color Chip</p>