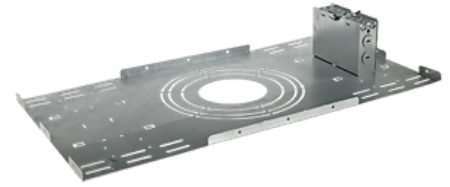




# Universal Mounting Kit for 4", 6", 8", 10" Canless Fixtures



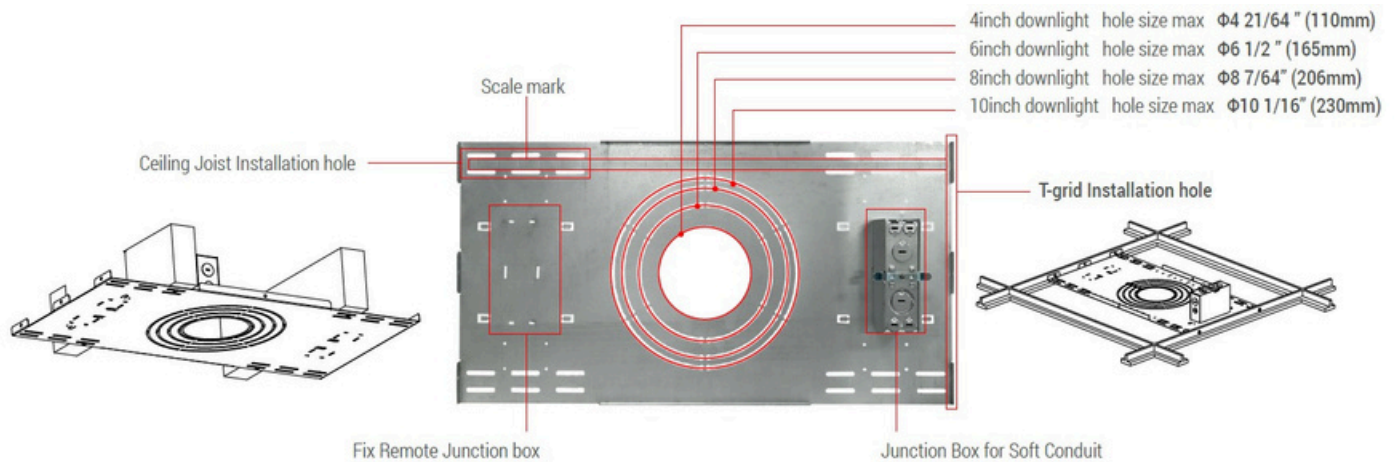
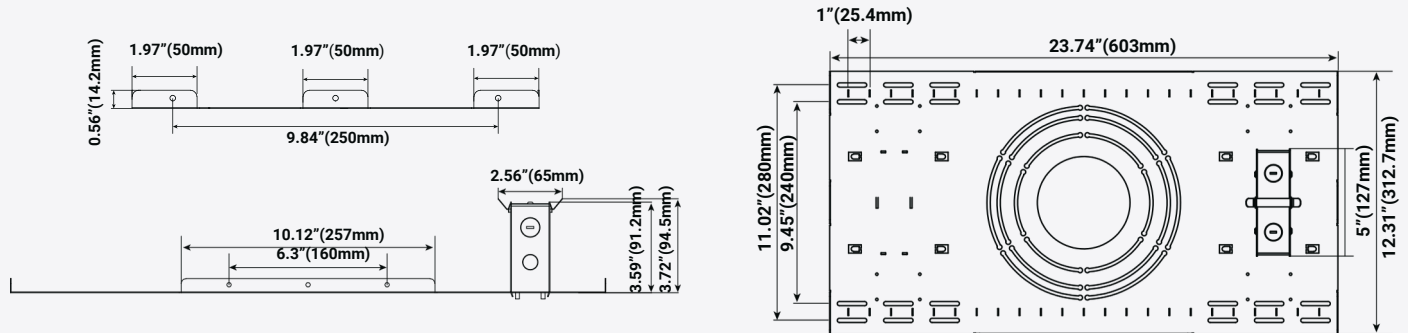
## LL-MP-UD46810-NC

### Universal Mounting Kit for 4", 6", 8", 10" Canless Fixtures

The LITELUME™ LL-MP-UD46810-NC Mounting Plate for recessed downlight. Suitable for canless fixtures.

MATERIAL	MOUNTING	FEATURES
<ul style="list-style-type: none"> <li>Galvanized Iron</li> </ul>	<ul style="list-style-type: none"> <li>Recessed</li> <li>Suitable for new construction joist &amp; T-Grid applications</li> </ul>	<ul style="list-style-type: none"> <li>Suitable for light type: 4 / 6 / 8 / 10 inch downlight</li> <li>Compatible with 4 types of hole size</li> <li>Equipped with a power card slot, easy to install</li> </ul>

## DIMENSIONS





# Universal Mounting Kit for 4", 6", 8", 10" Canless Fixtures

PROJECT NAME	
CATALOG #	
JOB TYPE	
PREPARED BY	
NOTES	

## COMPATIBLE FIXTURE TYPES

Canless Flat-Panel	Commercial Retrofit *	Canless Recessed Baffled	Canless Floating Gimbal
<a href="#">LL-FPR4</a> <a href="#">LL-FPR6</a> <a href="#">LL-FPR8</a>	<a href="#">LL-CDR4</a> <a href="#">LL-CDR6</a> <a href="#">LL-CDR8</a> <a href="#">LL-CDR10</a>	<a href="#">LL-IMODCR4</a> <a href="#">LL-IMODCR6</a>	<a href="#">LL-IFG4</a> <a href="#">LL-IFG6</a>

\* LL-CDR fixtures do not come equipped with a junction box. Installer must supply junction box for wiring in compliance with electrical code.

## ORDERING GUIDE

Brand	Product Type	Style	Can Size	Application
LL LITELUME	MP Mounting Plate	UD Universal Downlight	46810 4", 6", 8", 10"	NC New Construction

## FIXTURE ORDERING INFORMATION

Part #	Description
LL-MP-UD46810-NC	Universal Mounting Kit for 4", 6", 8", 10" Canless Fixtures