

# Boxy Canopy Premium Installation Instructions



## **Warning**

PLEASE READ ALL INSTRUCTIONS BEFORE ATTEMPTING INSTALLATION

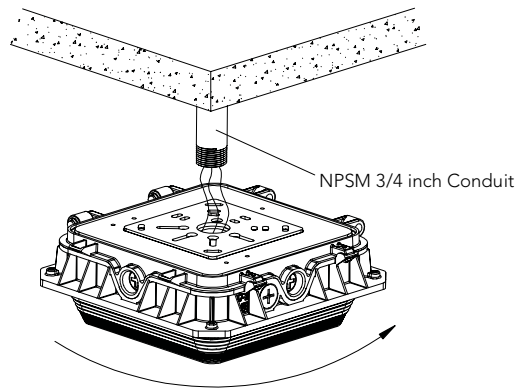
To avoid electric shock, disconnect power at source prior to installation

- Before installation, please carefully check whether the fixture is damaged, and contact the supplier in time if there is any damage.
- To prevent personal injury or product damage only licensed electricians should install.
- To avoid electric shock or component damage disconnect power before attempting installation or servicing.
- This product must be installed in accordance with the national electric code (NEC) and all applicable federal, state and local electric codes and safety standards.
- Disconnect product and allow cooling prior to servicing.
- Any alteration or modification of this product is expressly forbidden as it may cause serious personal injury, death, property damage and/or product malfunction.
- To prevent product malfunction and/or electrical shock this product must be properly grounded.
- This luminaire is designed to operate in ambient temperatures ranging from -40°C to 50°C and to be horizontally mounted with the LEDs facing down.
- This product must be installed in accordance with the applicable installation code by a person familiar with the construction and operation of the product and the hazards involved.
- Min 75°C supply conductor
- CONSULT A QUALIFIED ELECTRICIAN TO ENSURE CORRECT BRANCH CIRCUIT CONDUCTOR.
- CAUTION - RISK OF FIRE.
- This product is not available for several special environments, such as places with corrosive gas liquids or high pressure water vapor.

## Installation Instructions

### **1/2" NPS Knuckle Mount:**

1. Feed input leads through 3/4 inch conduit pipe (supplied by others and make wiring connections (See WIRING DIAGRAM)
2. Feed the power cords into the 3/4 inch conduit pipe and screw conduit pipe into fixture threading.

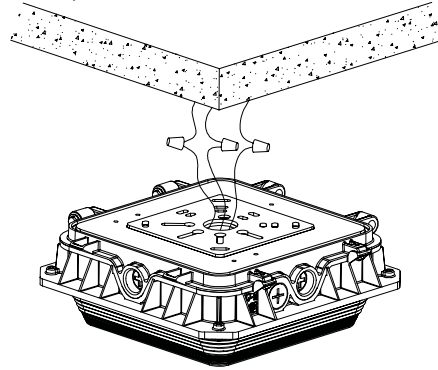


# Boxy Canopy Premium Installation Instructions



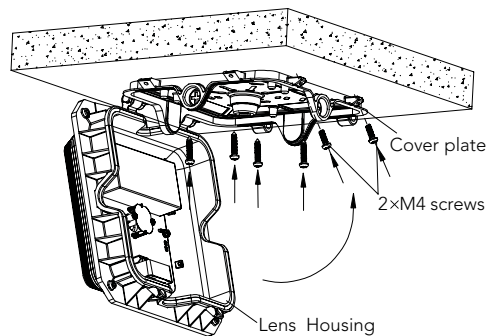
## Surface Mounted with J-box:

1. Make wiring connections (See WIRING DIAGRAM).



2. Loosen the 2pcs M4 screws on the side of housing and fix the Front housing to the ceiling using mounting screws (provided by others).

3. Re-attach the lens housing to the cover plate. Close the housing and screw down.

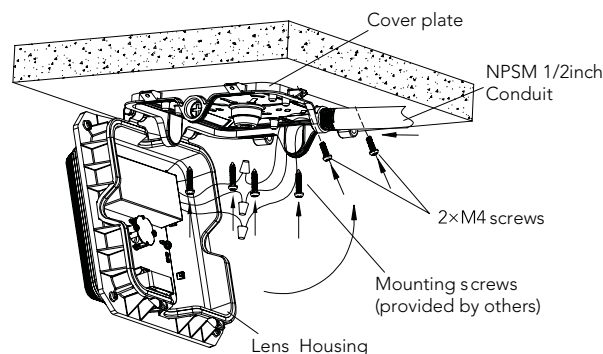


## Surface Mounted with J-box (side Conduit Entry):

1. Loosen the 2pcs M4 screws on the side and pull the power wires (which have passed through the center hole of cover plate) back to fixture, fix the back housing to the ceiling using mounting screws provided by others.

2. Use tool to knock the 1/2 inch hole which on the side of fixture. Feed input leads through 1/2 inch conduit pipe and screw pipe into fixture threading.

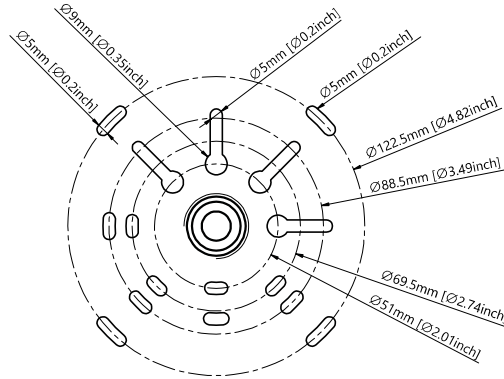
3. Make wiring connections (See WIRING DIAGRAM). Re-attach the lens housing to the cover plate. Close the housing and screw down.



# Boxy Canopy Premium Installation Instructions



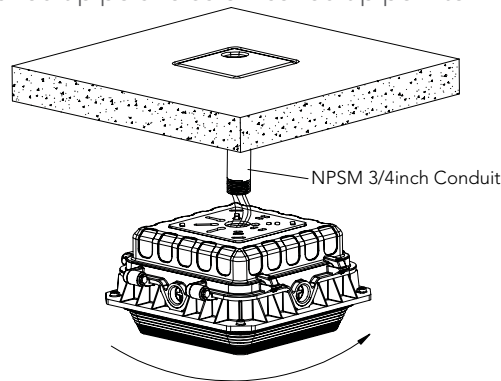
## Drill Location:



## With Emergency Backup

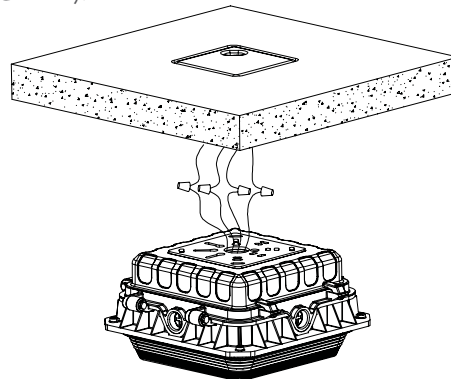
### Pendent with 3/4 inch Conduit:

1. Feed input leads through 3/4 inch conduit pipe (supplied by others and make wiring connections (See WIRING DIAGRAM)
2. Feed the power cords into the 3/4 inch conduit pipe and screw conduit pipe into fixture threading.



### Surface Mounted with J-box:

1. Make wiring connections See WIRING DIAGRAM).

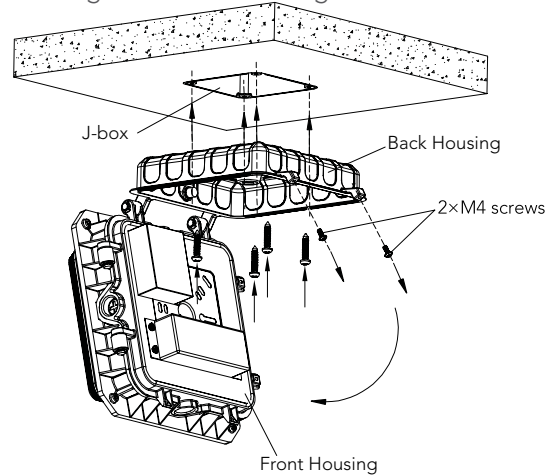


2. Loosen the 2pcs M4 screws (Which is only secured the back housing) and fix the back housing to the ceiling using mounting screws (provided by others).

# Boxy Canopy Premium Installation Instructions



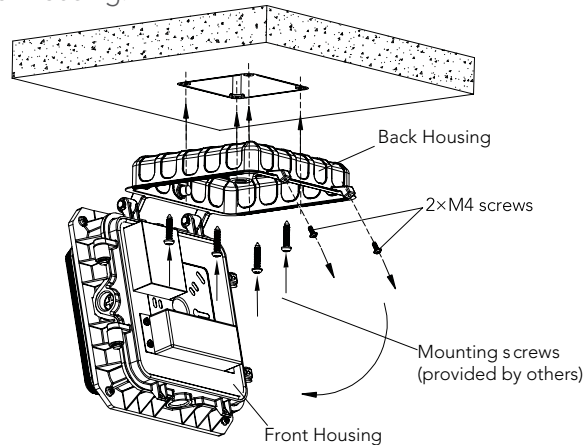
3. Re-attach the front housing to the back housing. Close the housing and screw down



## Surface Mounted with J-box (Side Conduit Entry):

1. Loosen the 2pcs M4 screws on the side and pull the power wires (which have passed through the center hole of back housing) back to fixture.

2. Re-attach the front housing to the back housing.



3. Loosen the 2pcs M4 screws (Which is secured the lens housing), and use tool to knock the 1/2 inch hole which on the side of fixture.

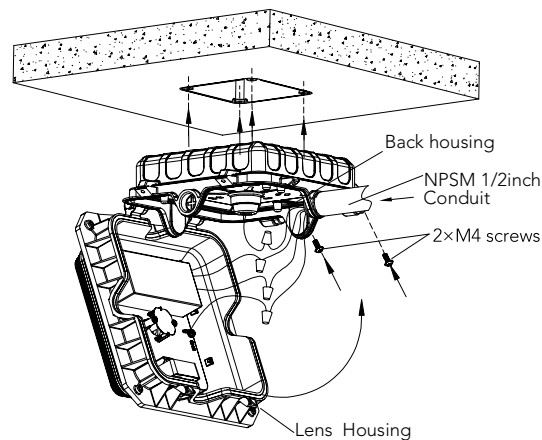
4. Pull the power wires(which have passed through the center hole of back housing) back to fixture.

5. Feed input leads through 1/2 inch conduit pipe and screw pipe into fixture threading.

# Boxy Canopy Premium Installation Instructions



6. Make wiring connections(See WIRING DIAGRAM). Re-attach the lens housing to the back housing. Close the housing and screw down.



## Wiring Diagram

**NOTE:** Two dimming wires are in the driver box.

WITHOUT EMERGENCY BATTERY			
LED FIXTURES	BLACK	⌋	Line
	White	⌋	Neutral
	Green/Yellow Green	⌋	Ground

---

WITH EMERGENCY BATTERY			
LED FIXTURES	RED	⌋	AC Line
	BLACK	⌋	AC Line switch
	White	⌋	Neutral
	Green/Yellow Green	⌋	Ground