

Keilton + autani

EFS106-AUX-W KIT

Plug and Play High Bay Long Range
Sensor Kit



WHBL1 Lens



EFS106-AUX-W Sensor



WSC01-AUX Accessory



WSC03-AUX Socket Extension
(All items shown included in kit)

Description

The EFS106-AUX-W series high bay sensor kits are optimized for Luminaire Level Lighting Control (LLLC) applications, particularly in outdoor environments. Each kit includes a sensor, lens, receptacle, and extension accessory in a single package. The sensors integrate daylight harvesting, passive infrared (PIR) motion detection, and long-range antennas within a UV-resistant black nylon housing. Designed for plug-and-play installation in linear and UFO high bay luminaires, these sensors utilize provided WSC01-AUX and WSC03-AUX accessories for easy mounting. Featuring the advanced **AlgoH²** algorithm, they ensure accurate detection in high bay applications up to 40 feet while minimizing false triggers, enhancing overall system efficiency and reliability.

Features

- Photocell+PIR sensing with **AlgoH²** algorithm for accurate detection up to 40ft without false triggers
- Photocell for Hold ON/OFF operation
- IP66 rated for wet locations and outdoor use
- UV-protection nylon housing for durability
- Enhanced long-range antenna, Bluetooth range up to 328ft
- WHBL1 lens included for optimal coverage
- WSC01-AUX receptacle and WSC03-AUX socket extension included for versatile installation
- Plug-and-play design for easy integration
- Compatible with linear and UFO high bay luminaires

Requirement

- Requires Dim-to-Off LED drivers with 12V AUX output

Specifications

Input Voltage	DC 12V
Input Current	50mA Max
Input Power	0.6W
Output Current	10mA Max
Output Power	0.1W
Dimming	Class 2, 0-10V DC 10mA Max
Sinking Current	10mA Max
Bluetooth Transmit	328ft Max
Radio Frequency	2.4GHz ± 75MHz
Bluetooth Version	4.2/5.0
Housing Material	UL 94-5VA Nylon
Detection Range	40-80ft
Mounting Height	20-40ft
Indoor/Outdoor Use	Outdoor Use
Operating Temperature	-30°C to 55°C, -22°F to 131°F
Storage Temperature	-30°C to 85°C, -22°F to 185°F
IP Rating	IP66/Wet Location
Color	Black/ White
Warranty	5 year warranty
Compliance	UL8750, RoHS
Safety	cULus Listed LED Controller E504054 FCC ID: 2A26YLTkTVT2022 DID: D061367 DLC: NLTRC5KL0TN

Mating Receptacle and Socket Extension (included in the product package)



Ordering Information - EFS106-W Series

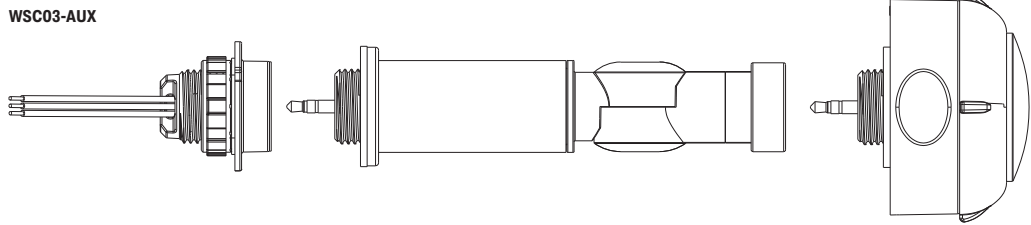
Model	BASE	Color	Photocell Type	Description
EFS106-AUX-W-KIT	AUX	Black	Hold ON/OFF	Plug and Play High Bay Long Range Sensor Kit
EFS106-AUX-W-KIT	AUX	White	Hold ON/OFF	Plug and Play High Bay Long Range Sensor Kit

* Photocell provides On/Off operation per threshold settings. Does not daylight harvest

Wiring



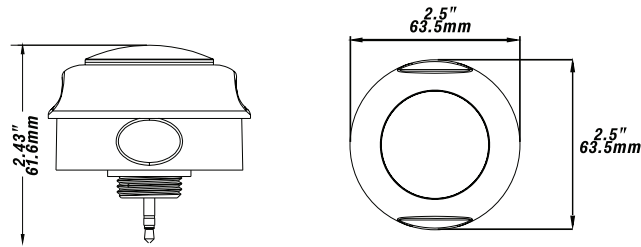
Socket Mounting Dimensions		1/2 inch US standard knockout
Size	T.P.I - inch	Major Dia. - inch
R1/2	14	0.825



Dimensions

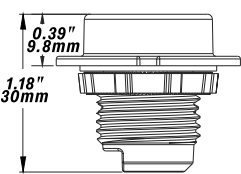
Unit:inch/mm

EFS106-AUX-W B1

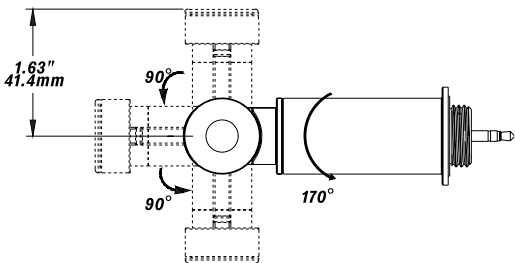
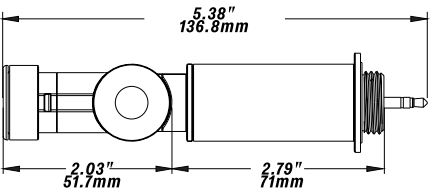


Dimensions - Accessories

WSC01-AUX



WSC03-AUX

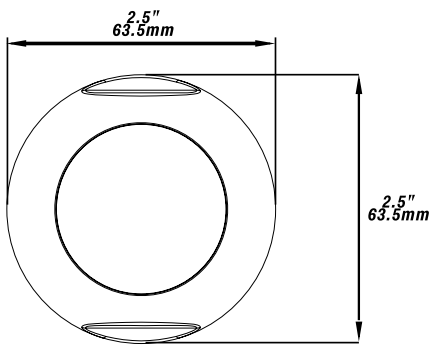
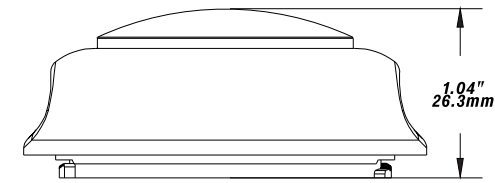


Socket Mounting Dimensions		1/2 inch US standard knockout
Size	T.P.I - inch	Major Dia. - inch
R1/2	14	0.825

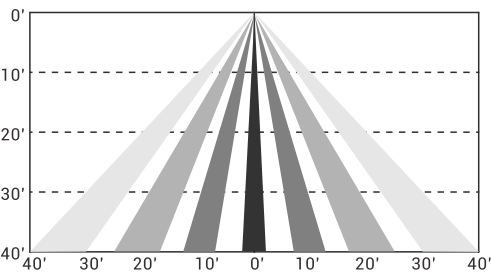
Dimensions - Accessories

Unit: inch/mm

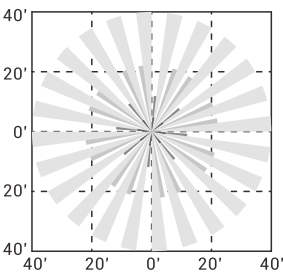
WHBL1



Coverage Side View



Coverage Top View



Height 40ft

Transmission

Wireless Signal Strength

Transmission Distance RSSI(dbm)

82ft(25m) -76

164ft(50m) -79

246ft(75m) -87

328ft(100m) -90

Note: The test transmission distance of two EFS106-W

Product Label



EFS106-AUX-W-KIT

The Bluetooth word mark and logos are registered trademarks owned by Bluetooth SIG, Inc. and any use of such marks by LiteTrace is under license. Other trademarks and trade names are those of their respective owners.

App Download



Due to our continued efforts to improve our products, specifications are subject to change without notice.

Contact Us

7001 Columbia Gateway Drive, Suite 210, Columbia, MD 21046, USA

T: +1 443-320-2233 (M-F 9am-5pm ET)

E: support@autani.com