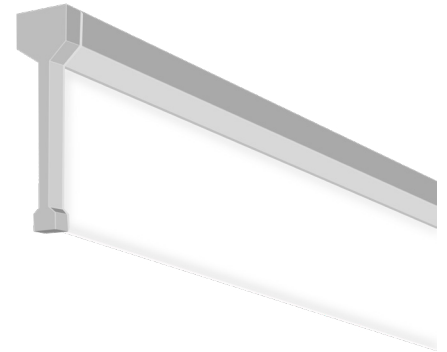




Avanta Surface Linear



Description

The LITELUME™ LED Avanta Surface Linear (LL-ASL) commercial lighting fixture delivers precise, textural and comfortable linear illumination for a variety of applications including, surface, wall, or suspended. Featuring 90 CRI, ultra-thin semi-transparent vertical optics enveloped in a sloping silhouette where the frame meets the optics with precisely controlled direct and indirect distribution. Perfect for applications that include conference rooms, open offices, retail settings, anywhere you want to make a statement.

Fixture Information

Size:	20W/30W/40W
Housing:	Extruded aluminum
Finish:	Protective powdercoat
Length:	2', 3' & 4'
Color:	Standard: White (WH), Black (BK)
Mounting:	Surface Mount, Pendant Dry ceiling or T-Grid ceiling compatible. Cable lengths choices of 4' or 12' or others are optional.
Cord length options:	Choices of 4' or 12' or others are optional.
Optics:	Semi transparent high precision allows distribution of controlled light to create direct-indirect vertical & downlight light distribution.
Driver Type:	External, constant current, class 2, high efficiency
Dimming:	0-10V dimming, dim to 10% or 0-10V dimming. Tested Dimmers : LUTRON DIVA-DVT, LEVITON IP710.
Operating Temperature:	-4° F to 104° F
Power Factor:	.90
THD:	<20%
CRI:	Standard: 90
Voltage:	Standard: 120-277V
Warranty:	10-Year Limited Warranty

Performance Data

Lumen Output:

2,400 to 4,800 lm

Lumens Per Watt (typical):

120 lm/W

CCT:

3000K
3500K
4000K

Distribution

Direct-indirect

Lifespan:

Features Premium LED's Minimum 50,000h with 87.8% of lumen maintenance in 25°C ambient temperature, in compliance with IES LM-80 testing measurements.

Ratings & Certificates

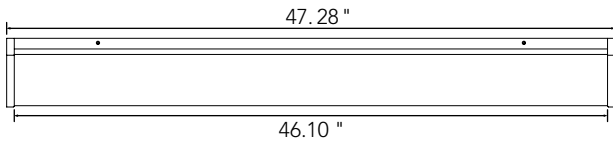
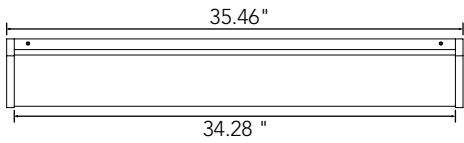
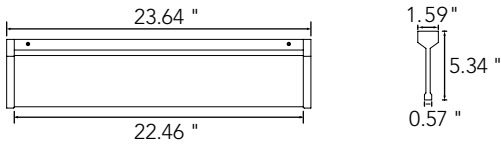
UL Listed For damp Location





Dimension

Item	Length	Width	Height
2'	23.64"	1.59"	5.34"
3'	35.46"	1.59"	5.34"
4'	47.28"	1.59"	5.34"

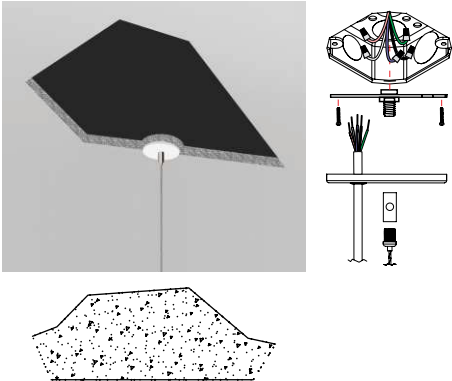


Mounting

Dry Ceiling / Off Grid (ORDER CODE: DW)

*Various hard ceilings (Mount to J-box)

Please see the installation instructions for more details



Pendant Accessories For Dry Ceiling

Canopy Kits



Mounting Kit 4' or 12' power cord



4' or 12' aircraft cable

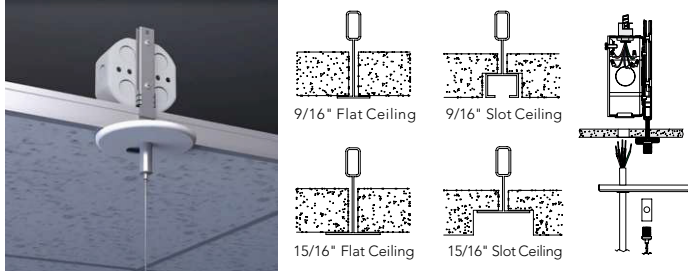


*Refer to accessories ordering guide to select specific canopy, power cord & aircraft cable combination



Drop ceiling / On grid (ORDER CODE(S):TF, TS or TX)

*Various T-grid ceilings 9/16" or 15/16" flat or 9/16" slot



Pendant Accessories For Drop Ceiling For 4'

Canopy Kits



Junction Box



Mounting Kit 4' or 12' power cord



4' or 12' aircraft cable



T-Grid Clips



For 9/16" and 15/16" Flat Ceiling (2 Clips/Set)



For 9/16" Slot Ceiling (2 Clips/Set)



For 15/16" Slot Ceiling (2 Clips/Set)

*Refer to accessories ordering guide to select specific canopy, power cord & aircraft cable combination

Canopy Style



1.6" Round (Non Power Feed)



4.5" Round (Power Feed)



4.5" Round With Emergency Driver (Non Power Feed)



5.8" Round With Occupancy Sensor (Power Feed)



1.6" Square (Non Power Feed)



4.5" Square (Power Feed)



4.5" Square With Emergency Driver (Non Power Feed)



Optional Accessories

Surface Mounting Kit





Optional Functions

Emergency Options

LITELUME™ offers UL& CEC Listed LED emergency drivers. When AC power fails it, immediately switches to the emergency mode operating for lighting minimum 90 minutes. When AC power is restored it, automatically returns to the charging mode which meets critical life-safety lighting requirements.



Emergency battery backup

Order Separated LED emergency driver

Optional 8w or 25w high voltage LED emergency driver can be provided if you need and do it wiring in field. For more info or spec sheet please visit our, website or contact sales.

Code-Required Testing

- Initial Self-Test After Installation

It will perform a functional test in 3 seconds after the driver installed to check the wiring and battery output when work. The indicator LED will be off or flicker in case of a failure or an error.

- Second Self-Test In 120 Minutes

It will perform second test in 120 minutes to check again. Upgrade in Gen 3: Repeat 4 times in every 120 minutes if fail in the second test.

- Monthly Self-Test

It will automatically perform a test every 30 days with a duration of 3 seconds, in which the wiring and battery output are checked. In case of a failure or an error, the indicator LED will be off or flicker.



Emergency battery backup

Order Separated LED emergency driver

Optional 8w or 25w high voltage LED emergency driver can be provided if you need and do it wiring in field. For more info or spec sheet please visit our, website or contact sales.

Code-Required Testing

- Initial Self-Test After Installation

It will perform a functional test in 3 seconds after the driver installed to check the wiring and battery output when work. The indicator LED will be off or flicker in case of a failure or an error.

- Second Self-Test In 120 Minutes

It will perform second test in 120 minutes to check again. Upgrade in Gen 3: Repeat 4 times in every 120 minutes if fail in the second test.

- Monthly Self-Test

It will automatically perform a test every 30 days with a duration of 3 seconds, in which the wiring and battery output are checked. In case of a failure or an error, the indicator LED will be off or flicker.





Occupancy Sensor

We can provide a factory-installed integrated sensor system for multi-level control based on motion and/or daylight contribution with BRI810-B-D level & daylight harvest microwave sensor from SHARKWARD. For more info or spec sheet, please contact sales.

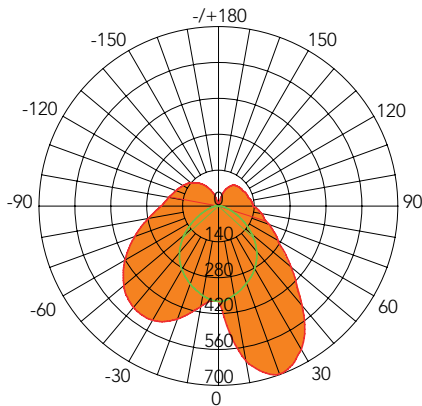


Specification

Power Supply	120/277 VAC 50/60Hz
Maximum load @-40°F~+158°F (-40°C~+70°C)	Resistive/ Tungsten-600W@120V Electronic Ballast(LED)-800VA@120V/1200VA@277V
HF System	5.8GHz CW
Dim Control Output	0-10V,max.25mA sinking current
Detection Radius/angle	Max 26ft.(8m)/360
Mounting Height	Max 12ft
Humidity	Max.95% RH
Temperature	-40°F~+158°F (-40°C~+70°C)

Photometrics

2' 3500K



AVERAGE BEAM ANGLE(50%): 134.4°

Lumens: 2513.51 Lm UNIT:cd

Watts: 20 W — C0/180, 172.9°

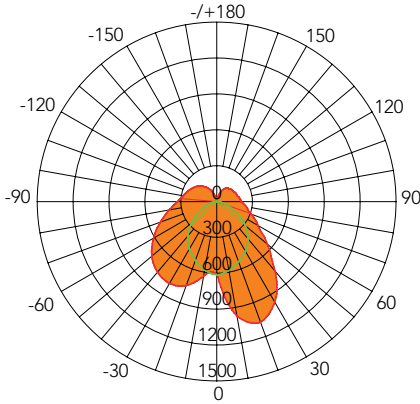
LPW: 128.60 Lm/W — C90/270, 95.9°

CCT: 3500K

Zonal Flux Diagram						Zonal Lumens		Luminance cd/(m2)		
γ	C0	C45	C90	C135	C180	γ	φ total	G(DEG)	C0/180	C90/270
10	611.9	529.4	353.2	372.8	398.2	0-10	39.83	85	17757	1235
20	696.7	605.3	321.0	405.9	469.0	10-20	172.8	80	9862	1231
30	646.1	587.6	282.2	434.1	514.3	20-30	397.3	75	7136	1355
40	507.3	499.5	233.0	434.4	516.3	30-40	682.1	70	6166	1547
50	370.0	396.0	170.6	406.3	482.6	40-50	983.6	65	5669	1817
60	268.7	307.9	105.5	362.4	421.9	50-60	1270	60	5384	2111
70	210.5	241.7	52.89	308.1	347.6	60-70	1524	55	5481	2397
80	170.9	192.0	21.38	254.4	278.2	70-80	1740	50	5768	2655
90	136.0	150.2	3.729	208.8	224.7	80-90	1916	45	6108	2868
100	129.3	141.9	0.7169	183.8	197.2	90-100	2066			
110	120.7	132.4	0	162.4	176.9	100-110	2195			
120	114.5	124.7	0	141.2	160.3	110-120	2305			
130	111.3	111.7	0	116.5	142.0	120-130	2392			
140	105.3	91.46	0	88.58	117.5	130-140	2455			
150	89.30	64.69	0	13.74	46.12	140-150	2494			
160	58.63	13.33	0	13.74	46.12	150-160	2511			
170	8.001	0.8131	0.0901	0.9910	3.441	160-170	2513			
180	0.2742	0.7223	0	0.5422	0.4570	170-180	2514			
DEG	LUMINOUS INTENSITY:cd					UNIT: lm				



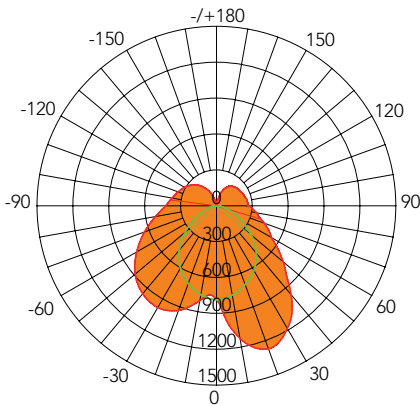
3' 3500K



AVERAGE BEAM ANGLE(50%): 131.8°
 Lumens: 3805.84 Lm UNIT:cd
 Watts: 30 W — C0/180, 172.9°
 LPW: 129.55 Lm/W — C90/270, 95.9°
 CCT: 3500K

Zonal Flux Diagram						Zonal Lumens		Luminance cd/(m2)			
γ	C0	C45	C90	C135	C180	γ	φ total	G(DEG)	C0/180	C90/270	
10	1124	1022	758.9	760.8	803.3	0-10	79.88	85	26130	2103	
20	1273	1138	701.6	829.5	929.4	10-20	340.0	80	14462	2074	
30	1185	1112	606.1	866.8	983.1	20-30	774.2	75	10471	2379	
40	973.0	958.4	519.0	842.6	961.5	30-40	1323	70	9068	2827	
50	729.5	773.1	379.3	774.9	887.5	40-50	1904	65	8384	3404	
60	531.8	612.2	230.6	686.5	770.2	50-60	2453	60	7975	3967	
70	426.6	486.9	117.9	585.1	640.8	60-70	2941	55	8151	4462	
80	340.1	390.7	50.83	486.0	519.1	70-80	3358	50	8620	4840	
90	269.6	309.6	9.746	399.4	426.1	80-90	3702	45	9128	5102	
100	259.8	293.4	1.830	352.8	377.8	90-100	3994				
110	247.9	274.0	1.542	312.7	342.5	100-110	4251				
120	236.4	254.7	1.541	268.5	310.9	110-120	4468				
130	227.1	227.3	1.540	219.2	271.1	120-130	4639				
140	213.0	184.6	1.599	164.2	221.8	130-140	4764				
150	184.7	114.4	1.665	102.2	158.7	140-150	4839				
160	125.8	49.61	1.731	33.69	82.85	150-160	4873				
170	34.73	13.20	2.806	3.606	13.88	160-170	4881				
180	2.040	3.092	2.889	2.495	1.943	170-180	4881				
DEG	LUMINOUS INTENSITY:cd					UNIT: lm					

4' 3500K



AVERAGE BEAM ANGLE(50%): 134.4°
 Lumens: 4593.3 Lm UNIT:cd
 Watts: 40 W — C0/180, 170.5°
 LPW: 125.53 Lm/W — C90/270, 95.5°
 CCT: 3500K

Zonal Flux Diagram						Zonal Lumens		Luminance cd/(m2)			
γ	C0	C45	C90	C135	C180	γ	φ total	G(DEG)	C0/180	C90/270	
10	1681	1536	1464	1540	1639	0-10	150.4	85	35045	3092	
20	1464	1389	1174	1251	1415	10-20	556.1	80	19601	2920	
30	1008	1008	825.6	852.5	999.1	20-30	1068	75	14272	3084	
40	645.8	654.5	421.9	578.8	733.5	30-40	1532	70	12484	3438	
50	441.9	428.7	220.7	429.0	564.5	40-50	1900	65	11396	3990	
60	320.7	316.0	147.9	342.3	460.6	50-60	2215	60	10646	4599	
70	224.5	227.9	88.91	263.3	343.1	60-70	2476	55	10947	5289	
80	149.4	161.2	39.14	192.8	239.4	70-80	2675	50	11358	5885	
90	95.30	105.0	0.5503	141.9	163.0	80-90	2812	45	11738	6380	
100	91.33	97.86	1.137	126.7	144.5	90-100	2918				
110	86.32	94.92	1.330	113.6	133.7	100-110	3012				
120	83.66	91.14	1.479	101.9	126.7	110-120	3094				
130	89.55	80.84	1.696	87.96	120.0	120-130	3162				
140	100.6	69.39	2.183	71.32	108.0	130-140	3214				
150	102.4	55.47	2.860	52.64	87.64	140-150	3251				
160	81.58	42.59	3.631	31.02	57.15	150-160	3271				
170	21.51	21.88	4.194	5.299	15.68	160-170	3278				
180	4.076	4.162	4.338	4.266	4.072	170-180	3279				
DEG	LUMINOUS INTENSITY:cd					UNIT: lm					



Application Images





Project Name	
Catalog #	
Job Type	
Prepared By	
Notes	

Ordering Guide

Brand	Fixture Type	Length	Lumen Package	Voltage	CCT	Power	Finish
LL	LITELUME ASL Avanta Surface Linear	2 2'	2L 2400 Lumens***	UNV 120-277V	SCT* Selectable Color Temperature	Blank 2' 20W	BK Black
		3 3'	5L 4800 Lumens****			SP Selectable Power**	WH White
		4 4'					

Emergency Battery		Controls	
Blank	No Emergency	Blank	No Sensor
EM8-H-170-HBF	Emergency battery backup 8W field installed	RDBK-BRI810-B-D	5.8" Round canopy black with Sharkward Line Voltage 0-10V Microwave Motion Sensor
EM25-H-170-HBF	Emergency battery backup 25W field installed	RDWH-BRI810-B-D	5.8" Round canopy white with Sharkward Line Voltage 0-10V Microwave Motion Sensor

Ceiling Type		Canopy		Power cord & aircraft cable	
SMK	Surface Mount Kit	Blank	Surface Mount	Blank	Blank Surface mount
DW	Drywall mount to j-box	RDBK	1.6" round black, 4'5" round black for power cable	C04BK	4' power cord black & 4' aircraft cable
TF	Drop ceiling clips for 9/16" and 15/16" flat ceiling	RDWH	1.6" round white, 4'5" round white for power cable	C04WH	4' power cord white & 4' aircraft cable
TS	Drop ceiling clips for 9/16" slot ceiling	SQBK	1.6" square black, 4'5" square black for power cable	C12BK	12' power cord black & 12' aircraft cable
TX	Drop ceiling clips for 15/16" slot ceiling	SQWH	1.6" square black, 4'5" square white for power cable	C12WH	12' power cord white & 12' aircraft cable

* SCT Selectable Color Temperature 3000K/3500K/4000K

** 3' & 4' only SP Selectable Power 20W/30W/40W

*** 2'

**** 3' & 4'

Fixture Ordering Information

****SELECT SURFACE MOUNT KIT or MUST SELECT CEILING TYPE, CANOPY, POWER CORD & AIRCRAFT CABLE COMBINATION ****

Part #	Wattage	Lumens	Kelvin	Voltage
LL-ASL-2-2L-UNV-SCT-BK	20W	2400	3000K 3500K 4000K	120-277
LL-ASL-2-2L-UNV-SCT-WH	20W	2400	3000K 3500K 4000K	120-277
LL-ASL-3-5L-UNV-SCT-SP-BK	20W/30W/40W	4800	3000K 3500K 4000K	120-277
LL-ASL-3-5L-UNV-SCT-SP-WH	20W/30W/40W	4800	3000K 3500K 4000K	120-277
LL-ASL-4-5L-UNV-SCT-SP-BK	20W/30W/40W	4800	3000K 3500K 4000K	120-277
LL-ASL-4-5L-UNV-SCT-SP-WH	20W/30W/40W	4800	3000K 3500K 4000K	120-277

Accessories Ordering Information

Part #	Description
EM8-H-170-HBF	Emergency Battery Back Up, 8W, High Voltage, 170V DC, Field Installed, 120-277V, 90 Minutes
EM25-H-170-HBF	Emergency Battery Back Up, 25W, High Voltage, 170V DC, Field Installed, 120-277V, 90 Minutes
RDBK-BRI810-B-D	5.8" Round Canopy Black With Sharkward Line Voltage 0-10V Microwave Motion Sensor
RDWH-BRI810-B-D	5.8" Round Canopy White With Sharkward Line Voltage 0-10V Microwave Motion Sensor
SMK	Surface Mount Kit
DW	Drywall Mount To J-Box
TF	Drop Ceiling Clips For 9/16" And 15/16" Flat Ceiling
TS	Drop Ceiling Clips For 9/16" Slot Ceiling
TX	Drop Ceiling Clips For 15/16" Slot Ceiling
RDBK	Canopy Kit 1.6" Round Black, 4'5" Round Black For Power Cable
RDWH	Canopy Kit 1.6" Round White, 4'5" Round White For Power Cable
SQBK	Canopy Kit 1.6" Square Black, 4'5" Square Black For Power Cable



SQWH	Canopy Kit 1.6" Square White, 4'5" Square White For Power Cable
C04BK	4' Power Cord Black & 4' Aircraft Cable
C04WH	4' Power Cord White & 4' Aircraft Cable
C12BK	12' Power Cord Black & 12' Aircraft Cable
C12WH	12' Power Cord White & 12' Aircraft Cable

* Please contact LITELUME for all Custom Option Requests