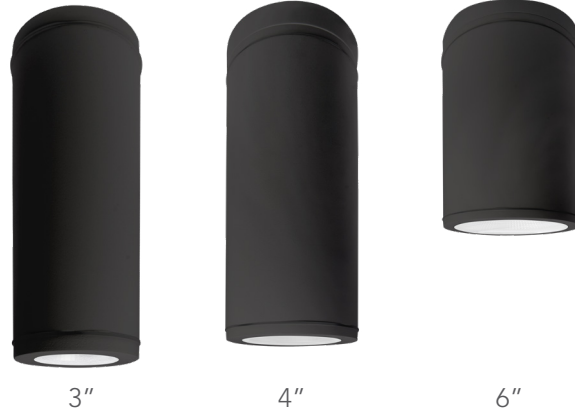




# Cylinder Small



## Description

The LITELUME™ LED Cylinder Small (LL-CYL-S) is a specification grade field adjustable Downlight luminaire designed for retrofit or new construction. Available in 3", 4", and 6" diameters. Featuring 3 color adjustable CCT, allowing for customized energy savings and comfortability.

Applications include hospitals, schools, restaurants, offices, hallways, conference rooms, bathrooms and many other commercial, residential & Hospitality areas.

## Fixture Information

Size:	13W/20W/33W
Housing:	Die-cast Aluminum Housing
Finish:	Protective powdercoat
Lens:	Glass
Color:	Standard: Black (BK) Optional: White (WH), Grey (GY)
Mounting:	Standard: Suspended up to 48" or Ceiling Mount Optional: Rigid Stem Mount up to 48" Standard: Direct Mount
Power Factor:	.90
CRI:	80
THD:	<15%
Operating Temperature:	-40°F to 104°F
Voltage:	Standard: 120-277V
Dimming:	Standard: 0-10V
Warranty:	10-Year Limited Warranty

## Performance Data

### Lumen Output:

1,559 to 4,571 lm

### Lumens Per Watt (typical):

120 to 138 lm/W

### CCT:

3000K/4000K /5000K Selectable

### Distribution:

45°  
75°

### Lifespan:

Up to 100,000 hours

### Ratings & Certificates

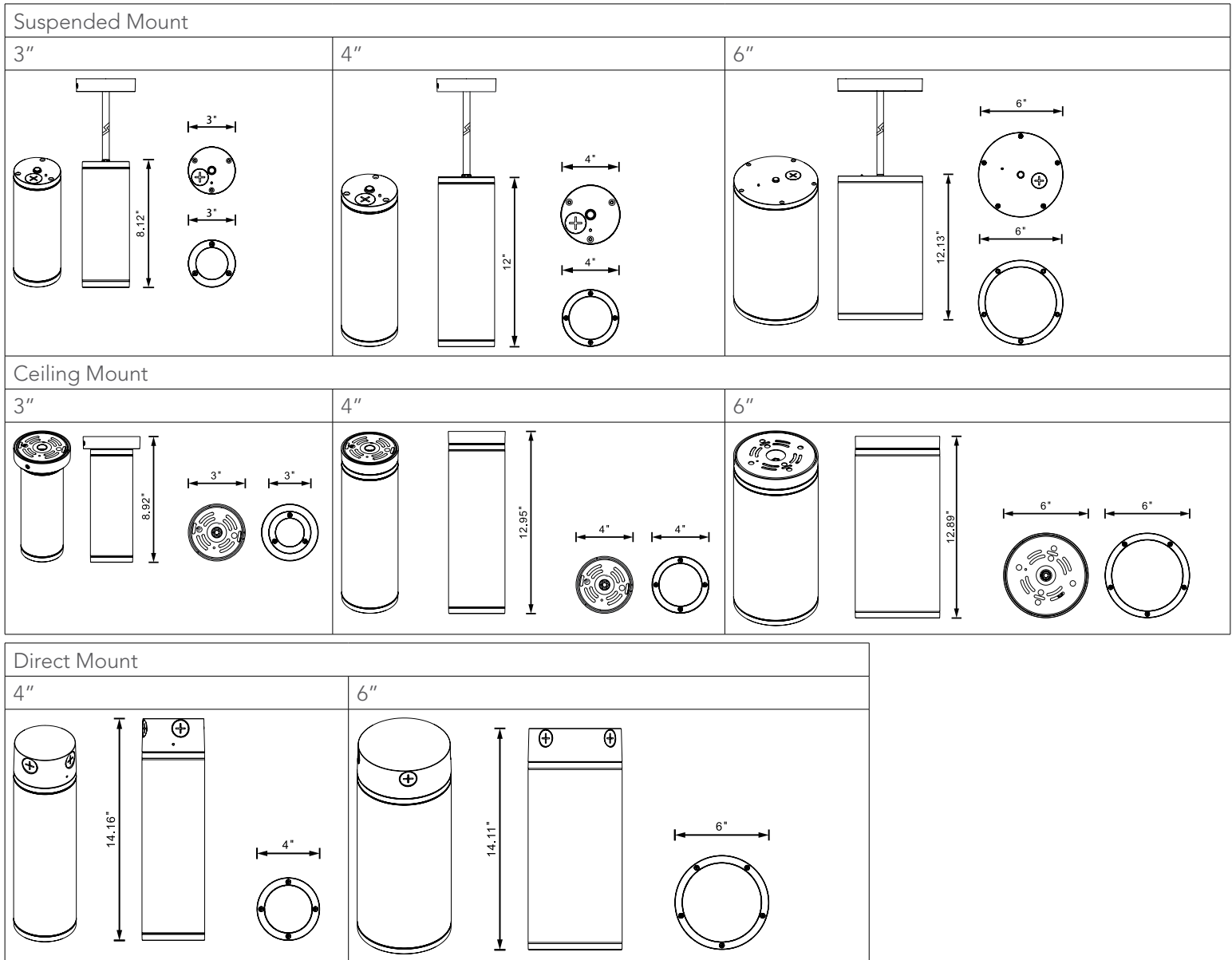
UL Listed for Wet Location





### Dimensions

Item	Diameter	Height
3" Suspended Mount	3"	8.12"
4" Suspended Mount	4"	12"
6" Suspended Mount	6"	12.13"
3" Ceiling Mount	3"	8.92"
4" Ceiling Mount	4"	12.95"
6" Ceiling Mount	6"	12.89"
4" Direct Mount	4"	14.16"
6" Direct Mount	6"	14.11"





## Features



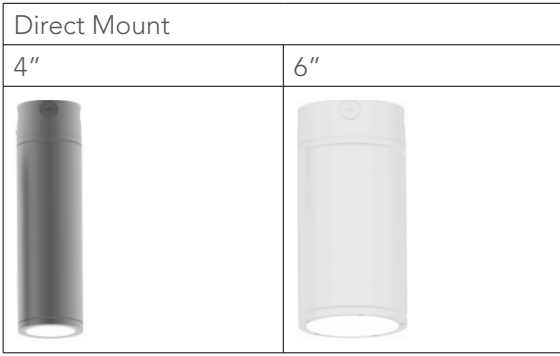
### FAO Controllers

Easy access to uplight and downlight switch. Smart control switch for selectable CCT and wattage.

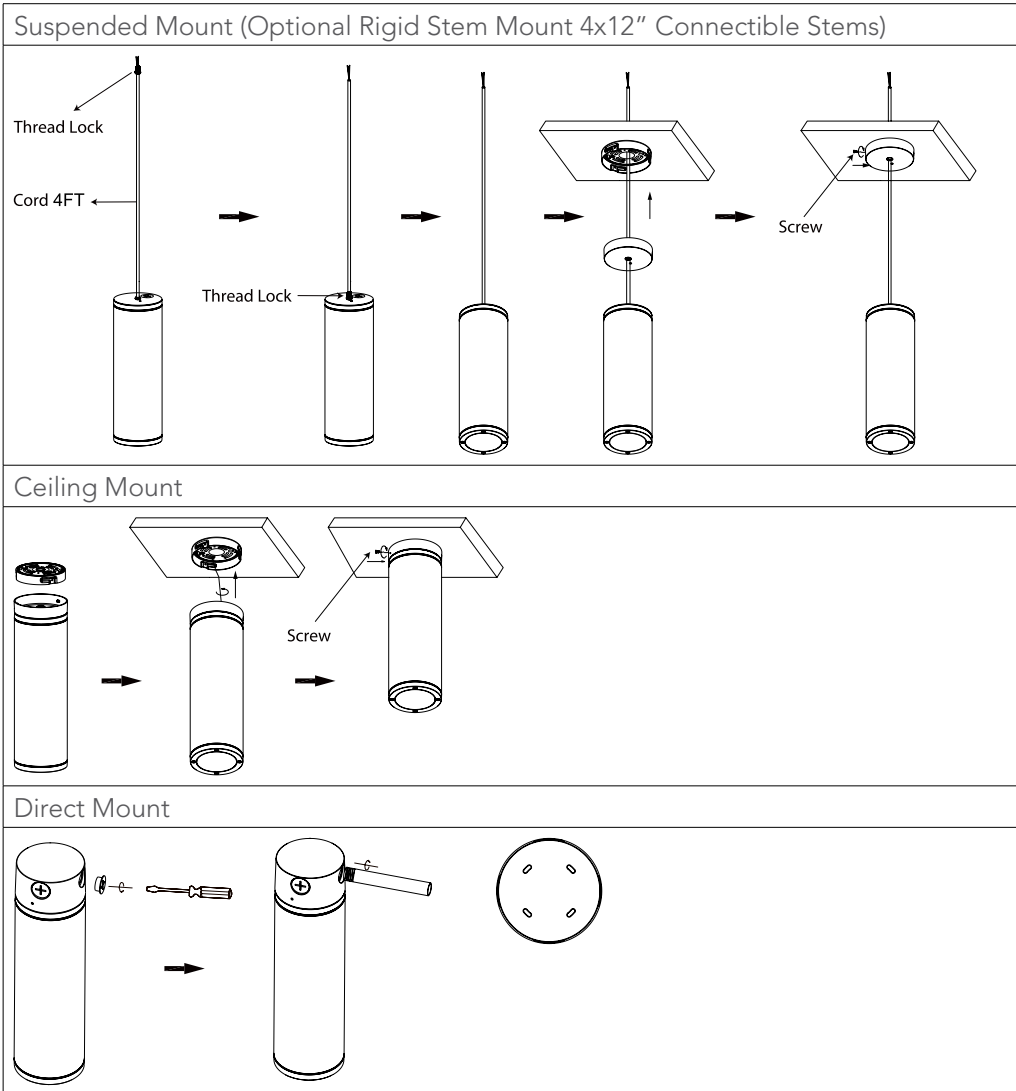


## Mounting Options

Suspended Mount (Optional Rigid Stem Mount 4x12" Connectible Stems)		
3"	4"	6"
Ceiling Mount		
3"	4"	6"



## Installation





<b>Project Name</b>	
<b>Catalog #</b>	
<b>Job Type</b>	
<b>Prepared By</b>	
<b>Notes</b>	

## Suspended or Ceiling Mount Ordering Information

Part #	Wattage	Lumens	CCT	Voltage	Distribution
LL-CYL-S-4-SC-20-3CCT-UNV-45D-BK	20	2542	3000K 4000K 5000K	120-277	45°
LL-CYL-S-6-SC-33-3CCT-UNV-45D-BK	33	4571	3000K 4000K 5000K	120-277	45°
LL-CYL-S-3-SC-13-3CCT-UNV-75D-BK	13	1559	3000K 4000K 5000K	120-277	75°
LL-CYL-S-4-SC-20-3CCT-UNV-75D-BK	20	2542	3000K 4000K 5000K	120-277	75°
LL-CYL-S-6-SC-33-3CCT-UNV-75D-BK	33	4571	3000K 4000K 5000K	120-277	75°
LL-CYL-S-4-SC-20-3CCT-UNV-45D-WH	20	2542	3000K 4000K 5000K	120-277	45°
LL-CYL-S-6-SC-33-3CCT-UNV-45D-WH	33	4571	3000K 4000K 5000K	120-277	45°
LL-CYL-S-3-SC-13-3CCT-UNV-75D-WH	13	1559	3000K 4000K 5000K	120-277	75°
LL-CYL-S-4-SC-20-3CCT-UNV-75D-WH	20	2542	3000K 4000K 5000K	120-277	75°
LL-CYL-S-6-SC-33-3CCT-UNV-75D-WH	33	4571	3000K 4000K 5000K	120-277	75°
LL-CYL-S-4-SC-20-3CCT-UNV-45D-GY	20	2542	3000K 4000K 5000K	120-277	45°
LL-CYL-S-6-SC-33-3CCT-UNV-45D-GY	33	4571	3000K 4000K 5000K	120-277	45°
LL-CYL-S-3-SC-13-3CCT-UNV-75D-GY	13	1559	3000K 4000K 5000K	120-277	75°
LL-CYL-S-4-SC-20-3CCT-UNV-75D-GY	20	2542	3000K 4000K 5000K	120-277	75°
LL-CYL-S-6-SC-33-3CCT-UNV-75D-GY	33	4571	3000K 4000K 5000K	120-277	75°

## Accessories Ordering Information

**\*\*REQUIRED TO USE RIGID STEM MOUNT WHEN SUSPENDING SMART CYLINDER\*\***

Part #	Description
CYL-RSM-S-BK	Rigid Stem Mount 4 X 12" Pieces Connectible Cylinder Small Black
CYL-RSM-S-WH	Rigid Stem Mount 4 X 12" Pieces Connectible Cylinder Small White
CYL-RSM-S-GY	Rigid Stem Mount 4 X 12" Pieces Connectible Cylinder Small Gray

## Suspended or Ceiling Mount Ordering Information

Part #	Wattage	Lumens	CCT	Voltage	Distribution
LL-CYL-S-4-DM-20-3CCT-UNV-45D-BK	20	2542	3000K 4000K 5000K	120-277	45°
LL-CYL-S-6-DM-33-3CCT-UNV-45D-BK	33	4571	3000K 4000K 5000K	120-277	45°
LL-CYL-S-4-DM-20-3CCT-UNV-75D-BK	20	2542	3000K 4000K 5000K	120-277	75°
LL-CYL-S-6-DM-33-3CCT-UNV-75D-BK	33	4571	3000K 4000K 5000K	120-277	75°
LL-CYL-S-4-DM-20-3CCT-UNV-45D-WH	20	2542	3000K 4000K 5000K	120-277	45°
LL-CYL-S-6-DM-33-3CCT-UNV-45D-WH	33	4571	3000K 4000K 5000K	120-277	45°
LL-CYL-S-4-DM-20-3CCT-UNV-75D-WH	20	2542	3000K 4000K 5000K	120-277	75°
LL-CYL-S-6-DM-33-3CCT-UNV-75D-WH	33	4571	3000K 4000K 5000K	120-277	75°
LL-CYL-S-4-DM-20-3CCT-UNV-45D-GY	20	2542	3000K 4000K 5000K	120-277	45°
LL-CYL-S-6-DM-33-3CCT-UNV-45D-GY	33	4571	3000K 4000K 5000K	120-277	45°
LL-CYL-S-4-DM-20-3CCT-UNV-75D-GY	20	2542	3000K 4000K 5000K	120-277	75°
LL-CYL-S-6-DM-33-3CCT-UNV-75D-GY	33	4571	3000K 4000K 5000K	120-277	75°