



LED Recessed Emergency Unit

LL-REM

LED Recessed Emergency Unit



PRODUCT INFORMATION

Illumination	Electrical
<ul style="list-style-type: none"> Ultra-bright, energy efficient, long-life White LED adjustable lamp heads provide up to 50-ft center-to-center spacing with a 3-ft path of egress at 12-ft mounting height. 1.0 watt (1 LED x 1.0 watt) per head. Unique all-inclusive lamp, reflector, and lens assembly. 	<ul style="list-style-type: none"> Universal 120-277 voltage. Unique LED indicator light alerts occupant on battery condition (Red-normal, OFF-check battery). Charge rate/power "ON" LED indicator light and push-to-test switch for mandated code compliance testing. 4.8V long-life, maintenance-free, rechargeable Nickel Metal Hydride or Nickel Cadmium battery. Internal solid-state transfer switch automatically connects the internal battery to LED lamp heads for minimum 90-minute emergency illumination. Fully automatic solid-state, two rate charger initiates battery charging to recharge a discharged battery in 24 hours.
Mounting	
<ul style="list-style-type: none"> Bar hangers included are compatible with drywall or drop ceiling mount installations. 	
Housing	Warranty / Listing
<ul style="list-style-type: none"> Injection-molded, engineering grade, 5VA flame retardant, impact-resistant, thermoplastic in white or black finish. Injection-molded, engineering grade, 5VA flame retardant, thermoplastic oval and rectangle trim plates in white or black finish included 	<ul style="list-style-type: none"> Five year warranty on all electronics and housing. Battery pro rated for two years. Meets UL924, NFPA 101 Life Safety Code, NEC, OSHA, Local and State Codes. UL Listed for damp locations (20°C – 40°C).
Options	
<ul style="list-style-type: none"> SDT: Self-diagnostic feature performs monthly, biannual, and annual tests to ensure reliable operation and meets electrical and life safety codes. 	



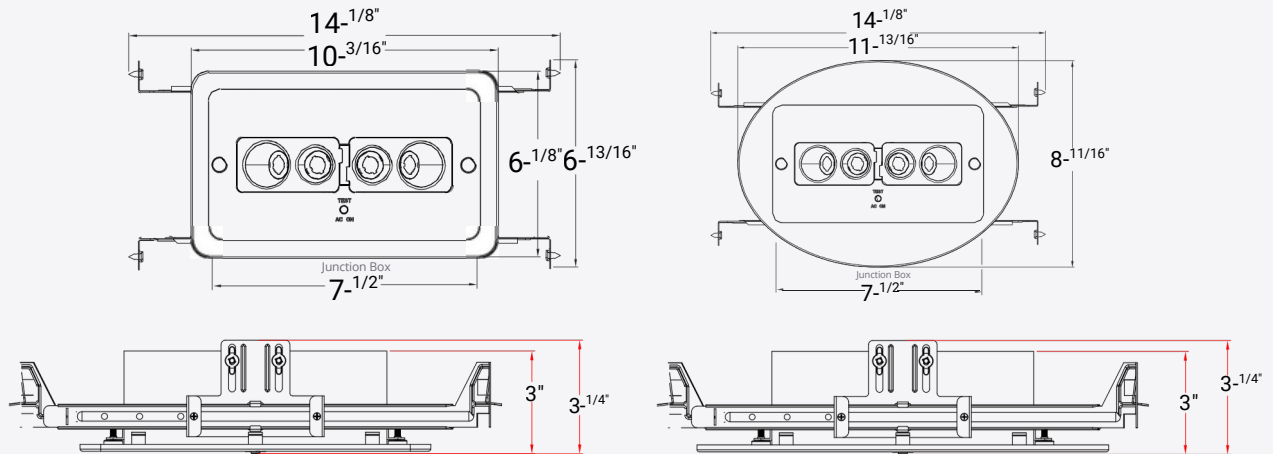
LED Recessed Emergency Unit

PROJECT NAME	
CATALOG #	
JOB TYPE	
PREPARED BY	
NOTES	

ORDERING GUIDE

Model	Housing Color	Options
LL-REM	WH White BK Black	SDT Self Diagnostics

DIMENSIONS



ELECTRICAL INFORMATION

Model	Input Watts (W)	Input Amps (A)
	120V-277V	120V-277V
LL-REM	2.0	0.03
LL-REM-SDT	2.5	0.03