



Cylinder Small



3"



4"



6"

Description

The LITELUME™ LED Cylinder Small (LL-CYL-S) is a specification grade field adjustable Downlight luminaire designed for retrofit or new construction. Available in 3", 4", and 6" diameters. Featuring 3 color adjustable CCT, allowing for customized energy savings and comfortability.

Applications include hospitals, schools, restaurants, offices, hallways, conference rooms, bathrooms and many other commercial, residential & Hospitality areas.

Fixture Information

Size:	13W/20W/33W
Housing:	Die-cast Aluminum Housing
Finish:	Protective powdercoat
Lens:	Glass
Color:	Standard: Black (BK) Optional: White (WH), Grey (GY)
Mounting:	Standard: Suspended up to 48" or Ceiling Mount Optional: Rigid Stem Mount up to 48" Standard: Direct Mount
Power Factor:	.90
CRI:	80
THD:	<15%
Operating Temperature:	-40°F to 104°F
Voltage:	Standard: 120-277V
Dimming:	Standard: 0-10V
Warranty:	10-Year Limited Warranty

Performance Data

Lumen Output:

1,559 to 4,571 lm

Lumens Per Watt (typical):

120 to 138 lm/W

CCT:

3000K/4000K /5000K Selectable

Distribution:

45°
75°

Lifespan:

Up to 100,000 hours

Ratings & Certificates

UL Listed for Wet Location

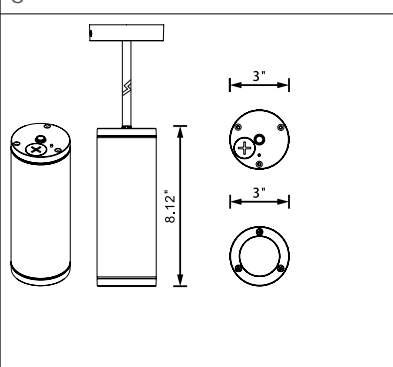
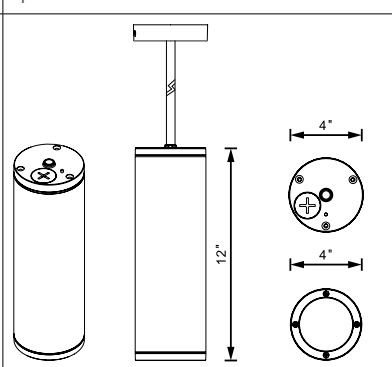
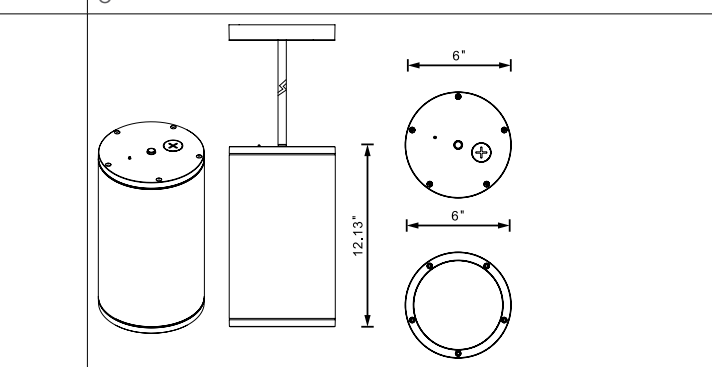




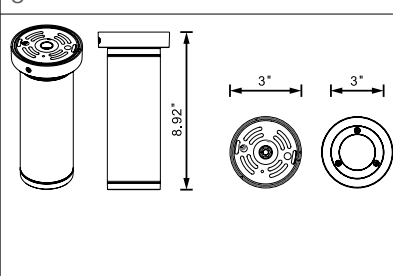
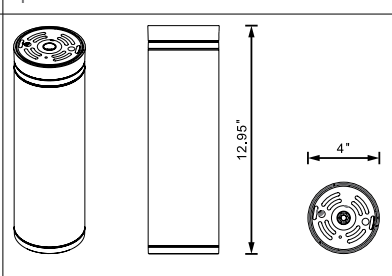
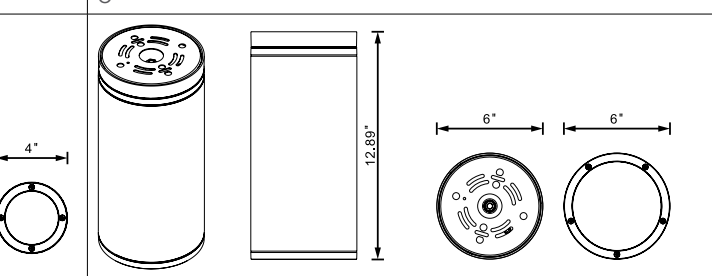
Dimensions

Item	Diameter	Height
3" Suspended Mount	3"	8.12"
4" Suspended Mount	4"	12"
6" Suspended Mount	6"	12.13"
3" Ceiling Mount	3"	8.92"
4" Ceiling Mount	4"	12.95"
6" Ceiling Mount	6"	12.89"
4" Direct Mount	4"	14.16"
6" Direct Mount	6"	14.11"

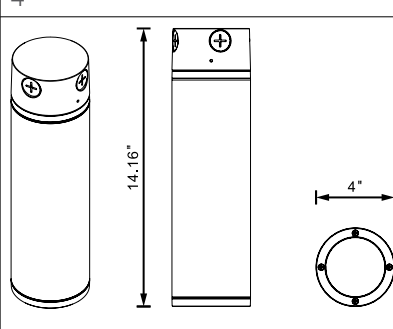
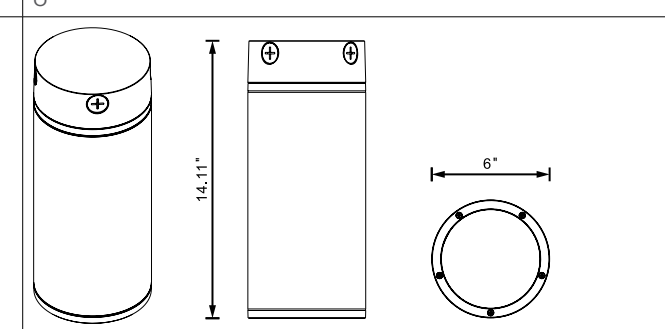
Suspended Mount

3"	4"	6"
		

Ceiling Mount

3"	4"	6"
		

Direct Mount

4"	6"
	



Features

FAO Controllers



Easy access to smart control switch for selectable CCT





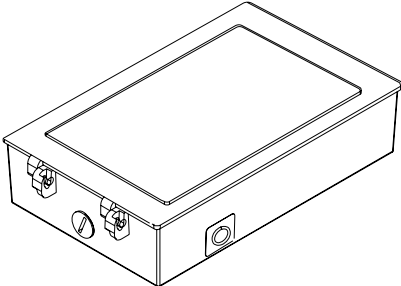
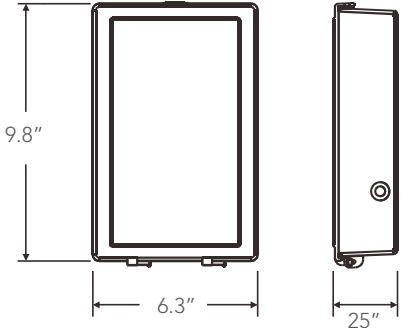
Mounting Options

Suspended Mount (Optional Rigid Stem Mount 4x12" Connectible Stems)		
3"	4"	6"
Ceiling Mount		
3"	4"	6"



Direct Mount	
4"	6"
	

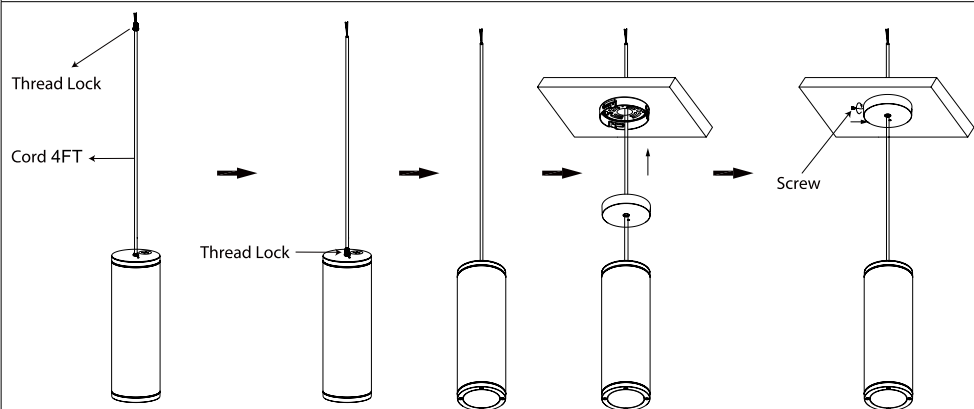
Emergency Battery Backup

 	
CWM-EM-R	Dimensions
	
Features <ul style="list-style-type: none">• IP65• Die-cast aluminum body• UV stabilized powder coated finish• Surface, wall mount; universal mounting pattern knockouts for 4" octagon or 4" square electrical boxes.• Two 1/2-14 NPT threaded conduit entries in back box.	

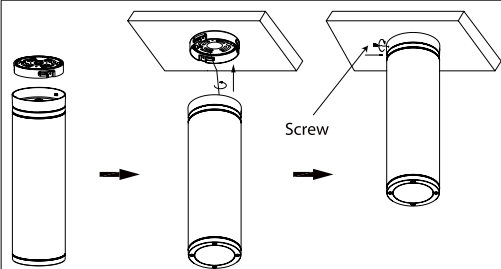


Installation

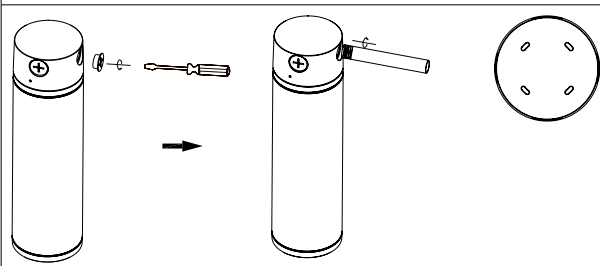
Suspended Mount (Optional Rigid Stem Mount 4x12" Connectible Stems)



Ceiling Mount



Direct Mount





Project Name	
Catalog #	
Job Type	
Prepared By	
Notes	

Suspended or Ceiling Mount Ordering Information

Part #	Wattage	Lumens	CCT	Voltage	Distribution
LL-CYL-S-4-SC-20-3CCT-UNV-45D-BK	20	2542	3000K 4000K 5000K	120-277	45°
LL-CYL-S-6-SC-33-3CCT-UNV-45D-BK	33	4571	3000K 4000K 5000K	120-277	45°
LL-CYL-S-3-SC-13-3CCT-UNV-75D-BK	13	1559	3000K 4000K 5000K	120-277	75°
LL-CYL-S-4-SC-20-3CCT-UNV-75D-BK	20	2542	3000K 4000K 5000K	120-277	75°
LL-CYL-S-6-SC-33-3CCT-UNV-75D-BK	33	4571	3000K 4000K 5000K	120-277	75°
LL-CYL-S-4-SC-20-3CCT-UNV-45D-WH	20	2542	3000K 4000K 5000K	120-277	45°
LL-CYL-S-6-SC-33-3CCT-UNV-45D-WH	33	4571	3000K 4000K 5000K	120-277	45°
LL-CYL-S-3-SC-13-3CCT-UNV-75D-WH	13	1559	3000K 4000K 5000K	120-277	75°
LL-CYL-S-4-SC-20-3CCT-UNV-75D-WH	20	2542	3000K 4000K 5000K	120-277	75°
LL-CYL-S-6-SC-33-3CCT-UNV-75D-WH	33	4571	3000K 4000K 5000K	120-277	75°
LL-CYL-S-4-SC-20-3CCT-UNV-45D-GY	20	2542	3000K 4000K 5000K	120-277	45°
LL-CYL-S-6-SC-33-3CCT-UNV-45D-GY	33	4571	3000K 4000K 5000K	120-277	45°
LL-CYL-S-3-SC-13-3CCT-UNV-75D-GY	13	1559	3000K 4000K 5000K	120-277	75°
LL-CYL-S-4-SC-20-3CCT-UNV-75D-GY	20	2542	3000K 4000K 5000K	120-277	75°
LL-CYL-S-6-SC-33-3CCT-UNV-75D-GY	33	4571	3000K 4000K 5000K	120-277	75°

Accessories Ordering Information

Part #	Description
CYL-RSM-S-BK	Rigid Stem Mount 4 X 12" Pieces Connectible Cylinder Small Black
CYL-RSM-S-WH	Rigid Stem Mount 4 X 12" Pieces Connectible Cylinder Small White
CYL-RSM-S-GY	Rigid Stem Mount 4 X 12" Pieces Connectible Cylinder Small Gray
CWM-EM-R-BK	Emergency Battery Back Up Remote Mounted 8W 1000 Lumens For Cylinder Wall Mount Black
CWM-EM-R-WH	Emergency Battery Back Up Remote Mounted 8W 1000 Lumens For Cylinder Wall Mount White
CWM-EM-R-GY	Emergency Battery Back Up Remote Mounted 8W 1000 Lumens For Cylinder Wall Mount Gray

Direct Mount Ordering Information

Part #	Wattage	Lumens	CCT	Voltage	Distribution
LL-CYL-S-4-DM-20-3CCT-UNV-45D-BK	20	2542	3000K 4000K 5000K	120-277	45°
LL-CYL-S-6-DM-33-3CCT-UNV-45D-BK	33	4571	3000K 4000K 5000K	120-277	45°
LL-CYL-S-4-DM-20-3CCT-UNV-75D-BK	20	2542	3000K 4000K 5000K	120-277	75°
LL-CYL-S-6-DM-33-3CCT-UNV-75D-BK	33	4571	3000K 4000K 5000K	120-277	75°
LL-CYL-S-4-DM-20-3CCT-UNV-45D-WH	20	2542	3000K 4000K 5000K	120-277	45°
LL-CYL-S-6-DM-33-3CCT-UNV-45D-WH	33	4571	3000K 4000K 5000K	120-277	45°
LL-CYL-S-4-DM-20-3CCT-UNV-75D-WH	20	2542	3000K 4000K 5000K	120-277	75°
LL-CYL-S-6-DM-33-3CCT-UNV-75D-WH	33	4571	3000K 4000K 5000K	120-277	75°
LL-CYL-S-4-DM-20-3CCT-UNV-45D-GY	20	2542	3000K 4000K 5000K	120-277	45°
LL-CYL-S-6-DM-33-3CCT-UNV-45D-GY	33	4571	3000K 4000K 5000K	120-277	45°
LL-CYL-S-4-DM-20-3CCT-UNV-75D-GY	20	2542	3000K 4000K 5000K	120-277	75°
LL-CYL-S-6-DM-33-3CCT-UNV-75D-GY	33	4571	3000K 4000K 5000K	120-277	75°