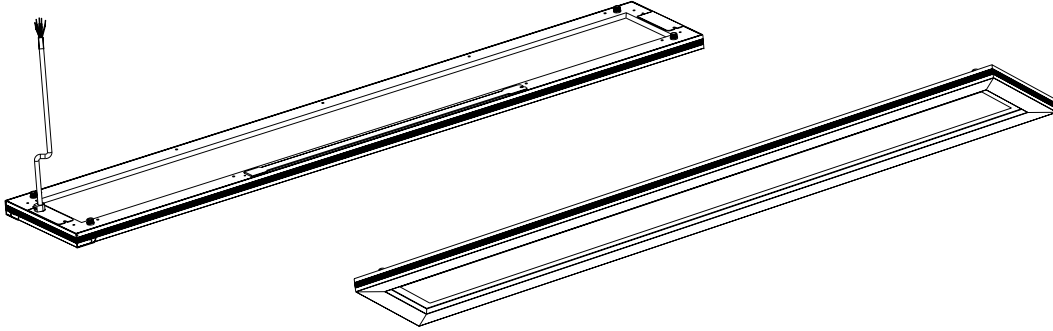


# Avanta Linear Up/Down Installation Instructions



## ⚠ Warning

RISK OF FIRE AND ELECTRICAL SHOCK. FIXTURE MUST BE INSTALLED BY A QUALIFIED ELECTRICIAN ONLY IN ACCORDANCE WITH NATIONAL, LOCAL BUILDING AND ELECTRICAL CODES. DISCONNECT POWER AT ELECTRICAL PANEL BEFORE SERVICING.



## Important

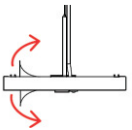
1. Read all instructions.
2. Install in accordance with national and local electrical code regulations.
3. This product is intended to be installed and serviced by a qualified, licensed electrician.
4. Do not install in wet locations. For dry and damp use only.
5. Turn off electrical power before installing or servicing fixture in any way.
6. To reduce the risk of fire and overheating, make sure all connections are tight.
7. Under no circumstances can the lighting fixture be covered with heat insulation gasket or similar materials.
8. Seamless continue runs per power feed:
  - 40W: Up to 10pcs in 120V AC, 20pcs in 230V AC and 25pcs in 277V AC
  - 60W: Up to 7pcs in 120V AC, 13pcs in 230V AC and 16pcs in 277V AC
  - 80W: Up to 5pcs in 120V AC, 10pcs in 230V AC and 12pcs in 277V

## Attention



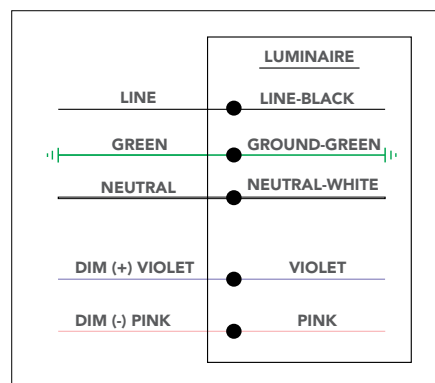
### SHOCK HAZARD!

May result in serious injury or death. Turn power OFF at circuit breaker prior to installation or servicing.



Once final building cleanup has been completed, remove remaining lens protective film.

## Wiring Diagram

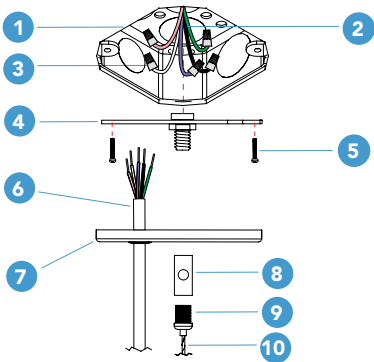


# Avanta Linear Up/Down Installation Instructions

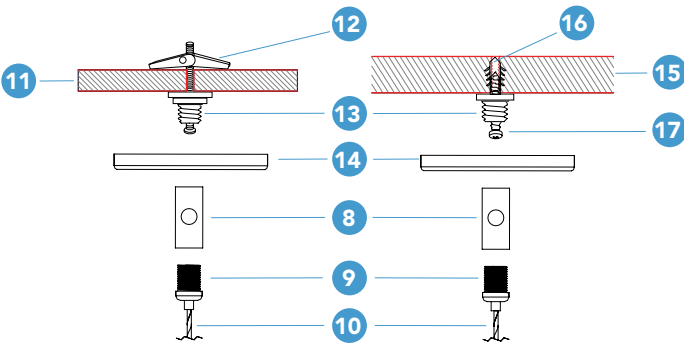


## Dry Ceiling Pendant

### Power Feed



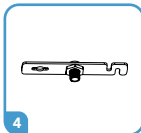
### Non Power Suspension



## Parts List



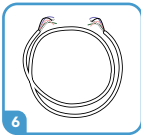
Wire Nut



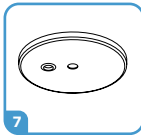
Junction Box Crossbar



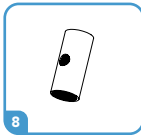
Screw PM4\*22



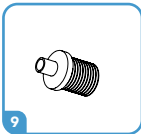
Power Cord



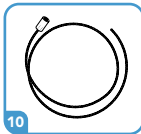
4" Canopy Power Feed



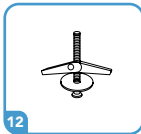
Cable Holder



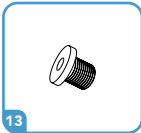
Strain Relief Thread Nut



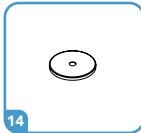
Aircraft Cable



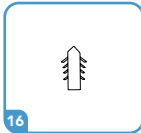
Butterfly Drywall Anchor



Crimp Stud



2" Canopy



Anchor



Screw PA4\*30

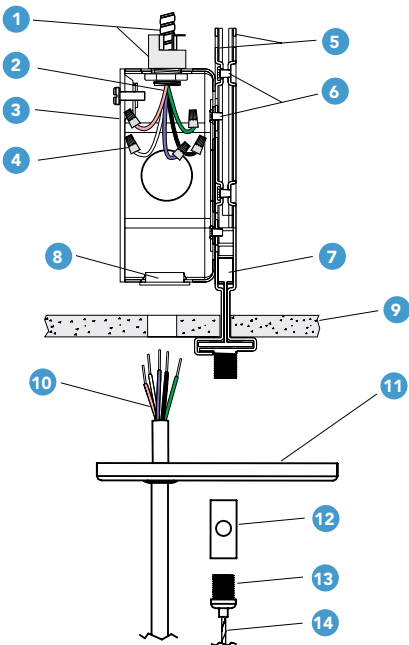
1	4" Octagon Junction Box (By Others)
2	Power Cord (By Others)
3	Wire Nut
4	Junction Box Crossbar
5	Screw PM4*22
6	Power Cord
7	4" Canopy Power Feed
8	Cable Holder
9	Strain Relief Thread Nut
10	Aircraft Cable
11	Drywall Ceiling (By Others)
12	Butterfly Drywall Anchor
13	Crimp Stud
14	2" Canopy
15	Solid Ceiling (By Others)
16	Anchor
17	Screw PA4*30

# Avanta Linear Up/Down Installation Instructions

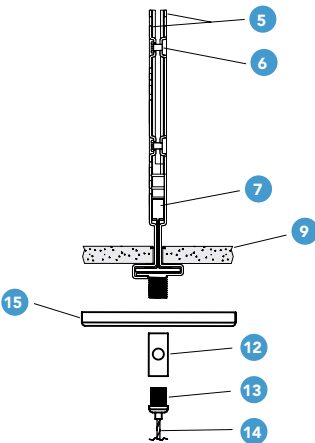


## Drop Ceiling Pendant

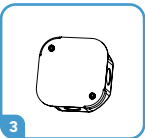
### Power Feed



### Non Power Suspension



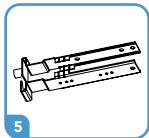
## Parts List



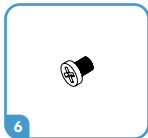
4" Octagon Junction Box



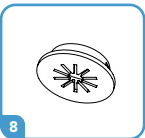
Wire Nut



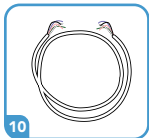
Assembled T-grid Clips



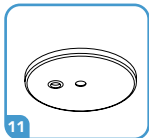
Screw 6#\*4



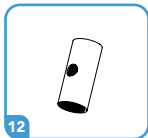
Plastic Grommet



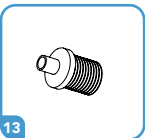
Power Cord



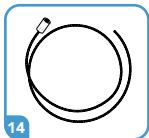
4" Canopy Power Feed



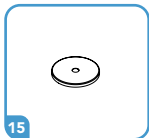
Cable Holder



Strain Relief Thread Nut



Aircraft Cable



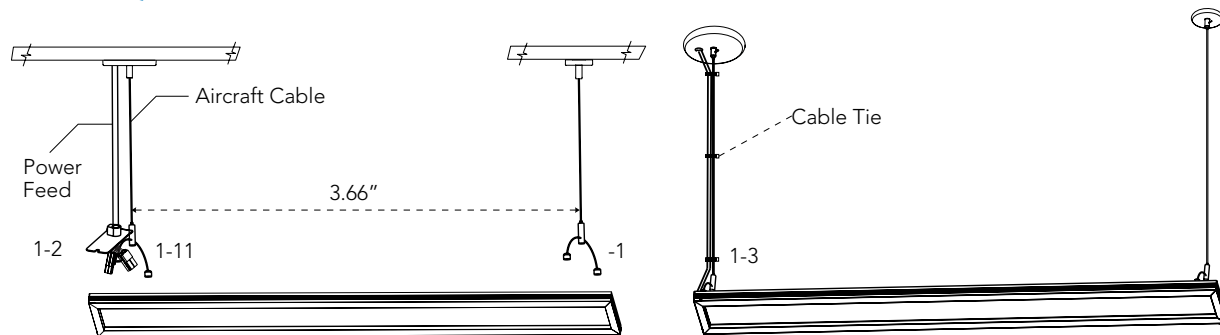
2" Canopy

1	Armored Cable & Connector (By Others)
2	Power Cord (By Others)
3	4" Octagon Junction Box
4	Wire Nut
5	Assembled T-grid Clips
6	Screw 6#*4
7	T-grid (By Others )
8	Plastic Grommet
9	Ceiling Tile (By Others)
10	Power Cord
11	4" Canopy Power Feed
12	Cable Holder
13	Strain Relief Thread Nut
14	Aircraft Cable
15	Solid Ceiling (By Others)

# Avanta Linear Up/Down Installation Instructions



## Independent Pendant 4FT UP/DOWN LINEAR

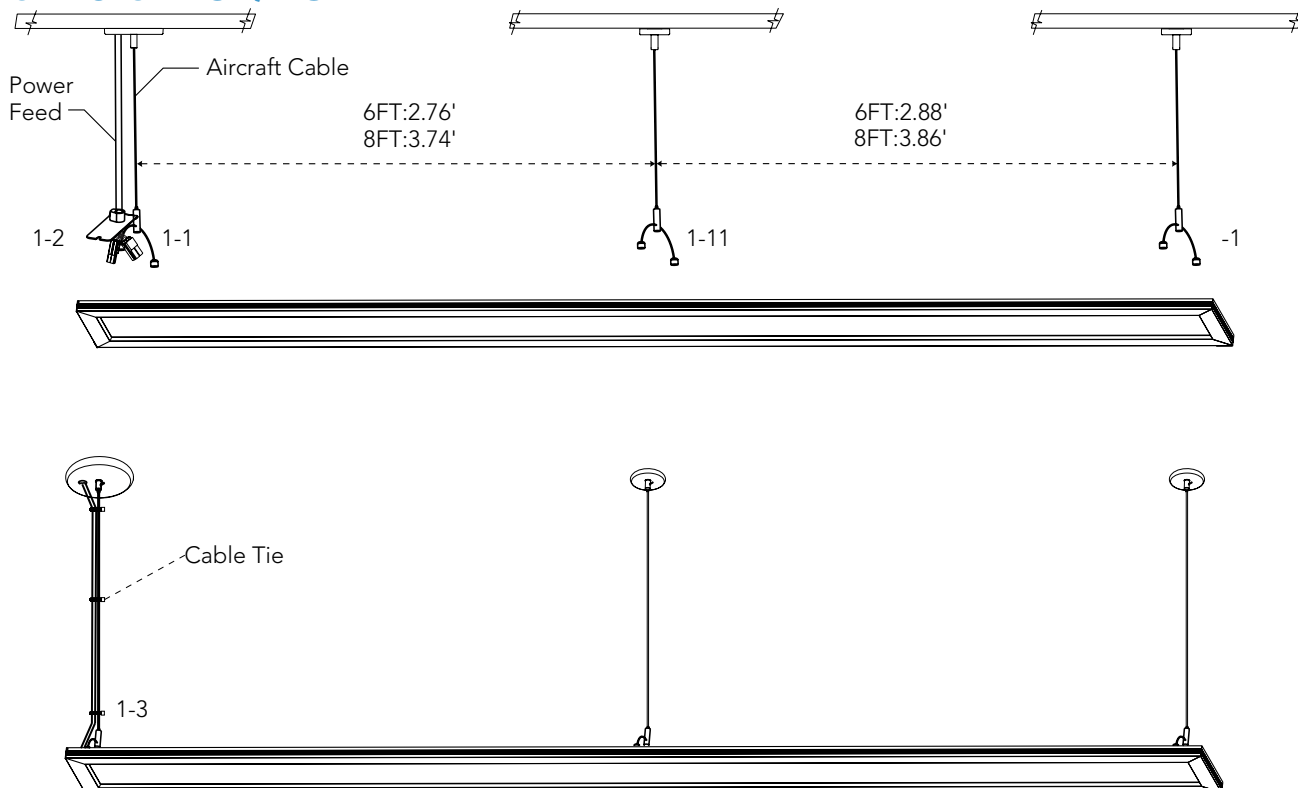


- 1-1: Screw aircraft cables clockwise on the top of luminaire.
- 1-2: Connect the quick connectors properly.
- 1-3: Zip tight power cord & aircraft suspension cable with the cable tie if needed.



Adjust the height of luminaire. Luminaire can be raised by pulling cable through the gripper and can be lowered by depressing the top cylinder on the gripper which pulls the luminaire down.

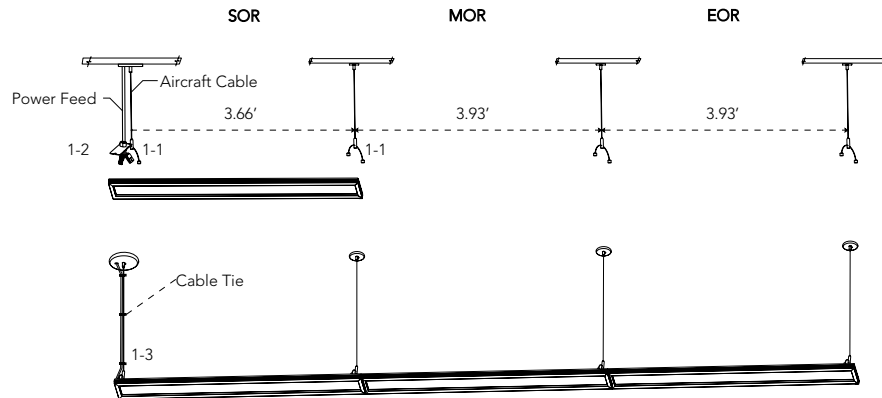
## 6FT & 8FT UP/DOWN LINEAR



# Avanta Linear Up/Down Installation Instructions



## Multiple Luminaire Connection 4FT UP/DOWN LINEAR



### Hang Luminaire

- 1-1: Screw aircraft cables clockwise on the top of luminaires.
- 1-2: Connect the quick connectors properly.
- 1-3: Zip tight power cord & aircraft suspension cable with the cable tie if needed

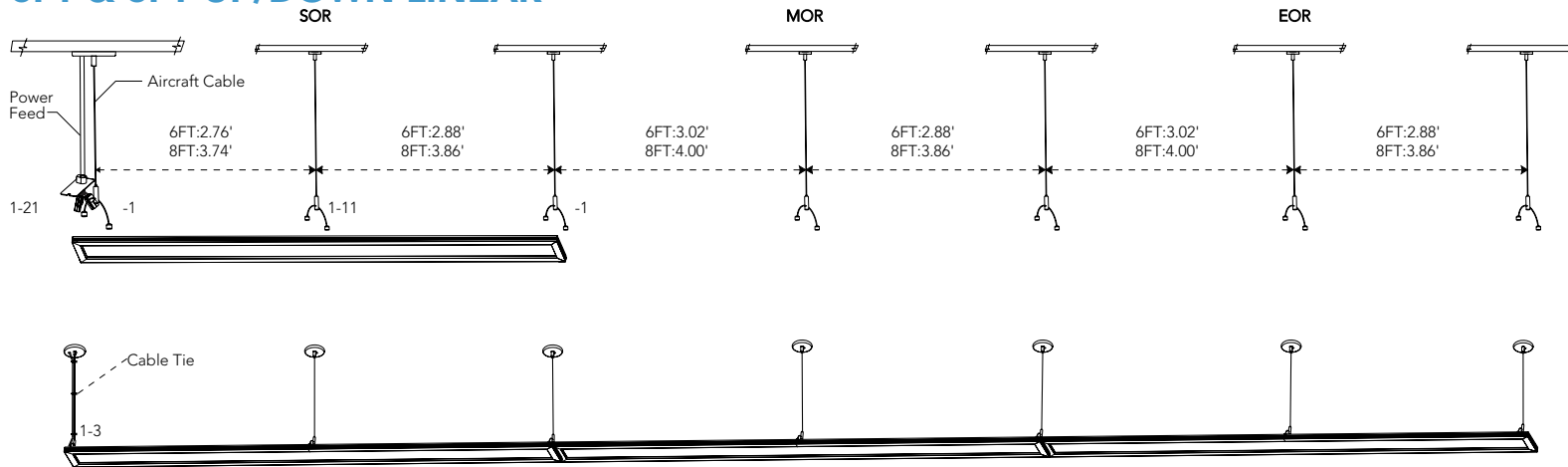


Adjust the height of luminaire. Luminaire can be raised by pulling cable through the gripper and can be lowered by depressing the top cylinder on the gripper which pulls the luminaire down.

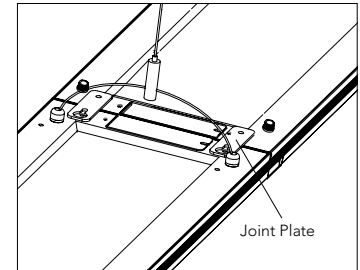
### Seamless Continue Runs Per Power Feed

40W: Up to 10pcs in 120V AC, 20pcs in 230V AC and 25pcs in 277V AC  
54W: Up to 8pcs in 120V AC, 15pcs in 230V AC and 18pcs in 277V AC  
80W: Up to 5pcs in 120V AC, 10pcs in 230V AC and 12pcs in 277V AC

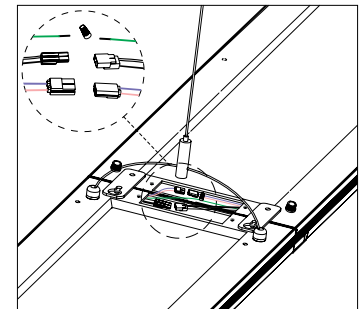
## 6FT & 8FT UP/DOWN LINEAR



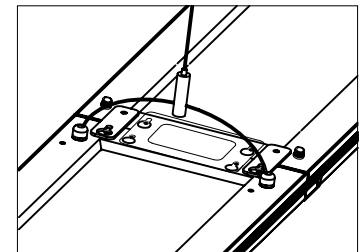
## Joint Steps



1. Joint two luminaires together by mounting the Joint plate on the both sides as shown.



2. Remove the existing covers, then connect the quick connectors properly.



3. Mount the joint cover by screw.