



Installation Instructions

Read these instructions completely and carefully, observing all CAUTIONS and WARNINGS shown throughout these instructions.

1. WARNING: RISK OF FIRE OR ELECTRIC SHOCK

- ****Disconnect**** or turn off power before installation or servicing.
- ****WARNING**** - Risk of fire or electrical shock. Luminaire wiring, power supply, or other electrical parts may be damaged when drilling for installation of retrofit assembly hardware. Inspect wiring and components for damage.
- ****WARNING**** - Risk of fire or electrical shock. Do not alter, relocate, or remove wiring, lampholders, power supply or any other electrical component.
- ****WARNING**** - Risk of fire or electrical shock. Installation of this retrofit assembly requires a person familiar with the construction and operation of the luminaire's electrical system and the hazard involved. If not qualified, do not attempt installation. Contact a qualified electrician.
- ****WARNING**** - Risk of fire or electrical shock. Install this kit only in the luminaires that has the construction features and dimensions shown in the drawings.
- Only those open holes indicated in the drawings may be made or altered as a result of kit installation. Do not leave any other open holes in an enclosure of wiring or electrical components. - Do not make or alter any holes in an enclosure of wiring or electrical components during kit installation.
- Verify that supply wiring voltage matches power supply voltage by comparing it with the power supply label.
- Make all electrical and grounded connections in accordance with the National Electrical Code (NEC) and any applicable local code requirements.

2. CAUTION: RISK OF INJURY

- Wear gloves and safety glasses at all times when removing luminaire from carton, installing, servicing or performing maintenance.
- Allow lamp/luminaire/driver to cool before handling

3. NOTICE: RISK OF PRODUCT DAMAGE

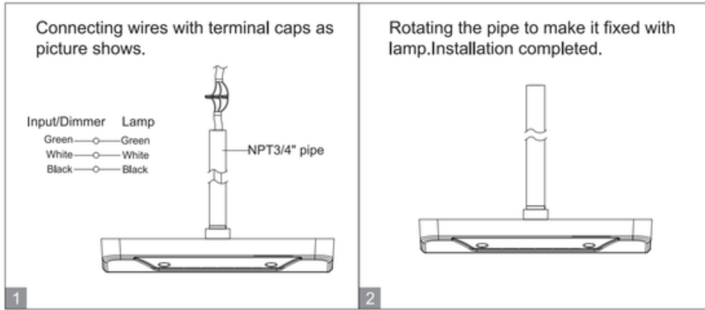
Failure to follow instructions could result in damage to product and void ****ALL**** warranties!

- Never connect components under load.
- Do NOT mount or support these fixtures in a manner that can cut the outer jacket or damage wire insulation.
- Do NOT restrict fixture ventilation. Allow for some volume of air space around fixture. Avoid covering LED fixtures with insulation, foam, or other material that will prevent convection or conduction cooling.

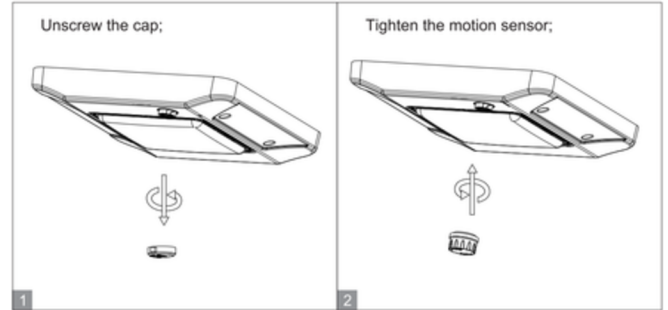
2. CLEANING INSTRUCTIONS

- It will occasionally be necessary to clean the outside of the lens. Frequency of cleaning will depend on ambient dirt level and minimum light output which is acceptable to the user.
- Lens should be wiped with a DAMP cloth with a solution of warm water and a mild, non-abrasive household detergent. Dry with soft, dry cloth.
- Do NOT use chemical cleaners such as powder cleansers, bleach, etc.
- Do NOT use scouring pads, as this will scratch and damage the lens finish.
- Do NOT wipe with a soiled cloth or wet towel - these may leave a residue that can damage finish.
- Do NOT pressure wash or hose down luminaire or driver.
- Do NOT immerse in water.

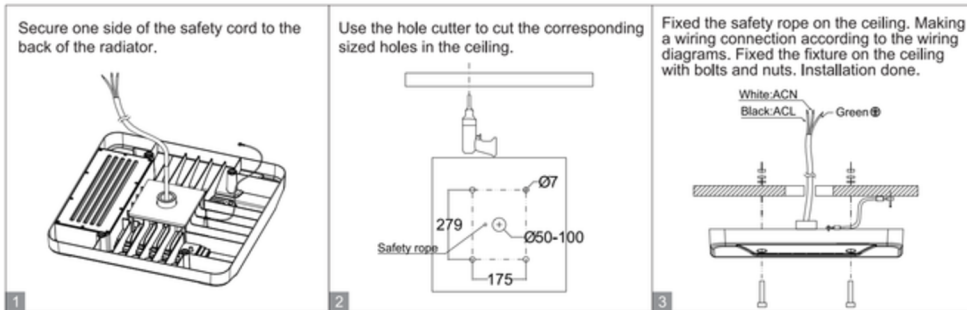
Pole-Pendant Installation



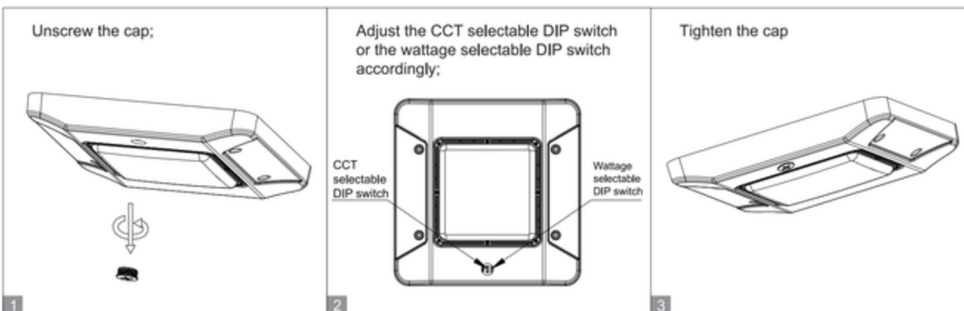
Sensing Function Installation



Ceiling Installation



Selectable CCT and Wattage Function Installation



The installation must be carried out by a qualified electrician.