



LL-SP-AB Anchor Base - Made in USA

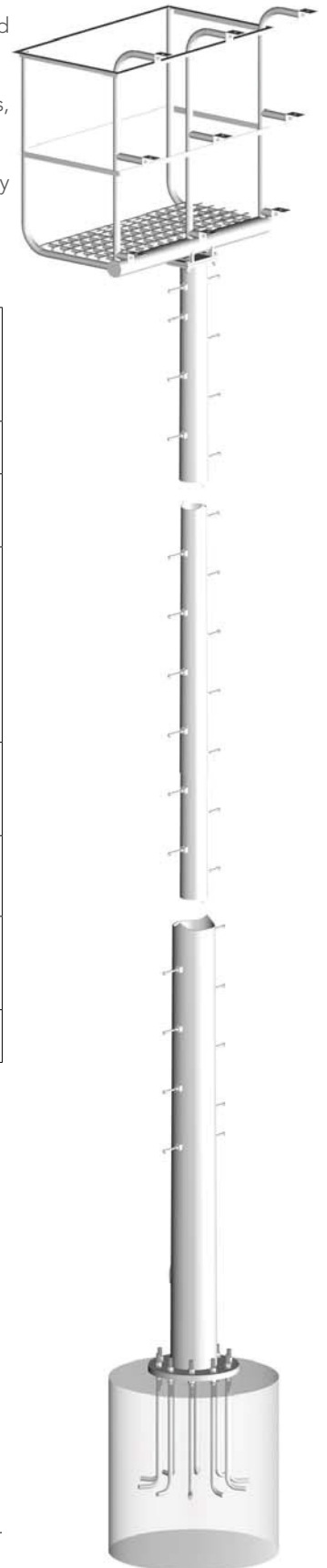


Description

Litelume offers a comprehensive selection of stadium lighting structures, parks and recreation light poles and outdoor lighting structures for parking lots and pedestrians.

Our sports lighting poles are equipped with either cross arms or full-service platforms complete with walkways, safety cables, pole steps.

These service platforms are available in either angle or tubular designs. All sports and stadium lighting poles may be galvanized or finished with paint or powder coating.



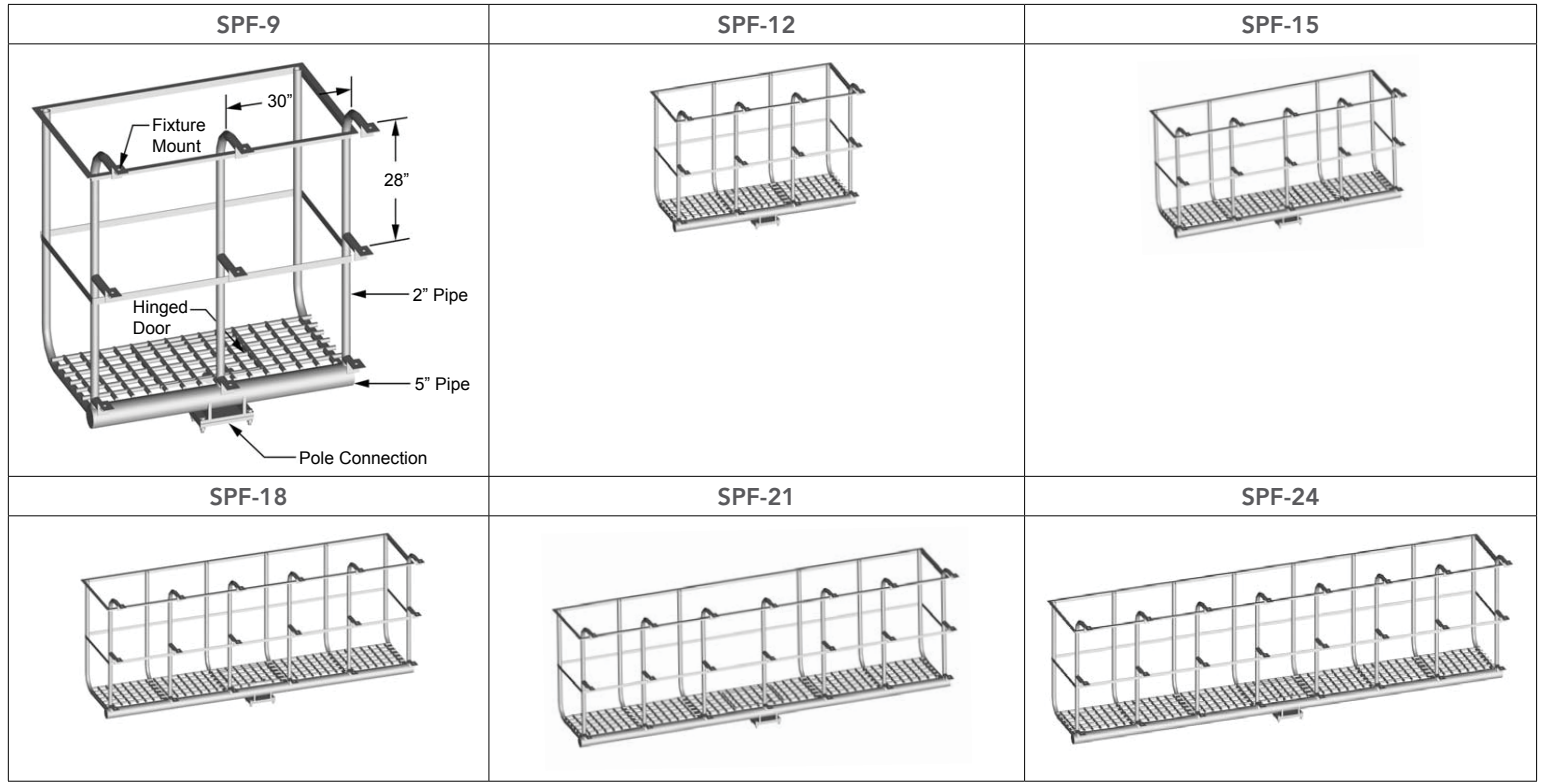
Features

Design:	The selection of the correct pole design is predicated on the specific loading requirements of each application. The poles located in the steel pole chart are designed to withstand dead loads and theoretical dynamic loads developed by sustained winds of 80 MPH through 110 MPH times the 1.3 gust factor. The combined EPA and the weight of the luminaire, light support brackets, platforms and any other attachments cannot exceed the rated EPA or allowable weight of that pole.
Welding:	All welds shall be of the highest quality and performed by American Welding Society certified welders conforming to the latest version of the American Welding Society specification AWS D1.1.
Finish:	All poles, mounting brackets and platforms are furnished with a coating of either red oxide/zinc primer, factory painted, powder coated or hot-dip galvanized to ASTM A-123. Miscellaneous hardware will be galvanized to ASTM A-153. Exterior finish coatings are available by request.
Pole Shaft:	The steel pole shall consist of the appropriate number of pole sections, either round or multi-sided, for heights up to 120 feet. Each section shall be fabricated from high strength low alloy steel conforming to ASTM A-572, with a minimum yield strength of 55,000 psi. These shafts shall telescope over each other to match the overall desired pole height. The overlap telescoping joint shall have a length that is the larger of 2 feet or 1-1/2 times the diameter of the inside of the female tube. The sections shall be pre-fitted and match marked at the factory. All sections shall maintain a uniform taper from top to bottom. There shall be at least one longitudinal seam weld in the tapered section of the shaft. The longitudinal seam weld shall have at least 60% penetration, except in the areas where the shaft section telescopes over another. In overlapping areas, the weld penetration shall be 100%. No circumferential weld splices may be used in fabricating the shafts.
Base Plate:	The base plate is fabricated from a structural quality hot rolled carbon steel plate that meets or exceeds ASTM A-36 with a minimum yield of strength of 42,000 psi. The base plate shall telescope the pole shaft and have a circumferential weld on the top and bottom or shall have a full penetration butt weld with a back up bar. The anchor bolt holes shall be slotted and will be a minimum 1/4" larger than the diameter of the anchor bolts used on the pole.
Hand Hole:	An oval reinforced hand hole, having a nominal 4" x 6" x .25" wall, will be installed 18" above the base plate. A hand hole cover and attaching hardware is included with each hand hole assembly. A ground lug will be welded inside the pole opposite the hand hole. This is standard on all poles unless otherwise specified.
Anchor Bolts:	Anchor bolts are fabricated from a commercial quality hot-rolled carbon steel bar that meets or exceeds minimum yield strength of 55,000 psi. Anchor bolts are sized according to each pole design and are furnished with 2 galvanized heavy hex nuts and 2 galvanized fl at washers. Anchor bolts shall be galvanized a minimum of 6 inches on the threaded end in accordance with ASTM A-153. Anchor bolts will ship with the poles unless otherwise noted.
Pole Tops:	Each pole will be provided with either a removable pole cap, fl at plate, or 2 3/8" O.D. x 5" tenon top (other sizes available).

<p>Safety Harness</p> <p>Safety Harness w/ D Ring</p> <p>Cable Grab</p> <p>6 Ft. Lanyard</p> <p>Safety Cable on Pole</p>	<p>Base Plate Detail:</p> <p>Light Direction</p> <p>Bolt Circle</p> <p>5°</p> <p>Hand Hole</p> <p>18" Thk.</p>	<p>Removable Pole Step:</p> <p>5/16" Galv. Safety Cable</p> <p>30"</p> <p>15"</p> <p>3/4" Hex Nut</p> <p>3/4" x 6 1/2" Step Bolt</p> <p>To Pole Base</p> <p>Bottom Cable Terminator</p>
---	---	--



Service Platforms



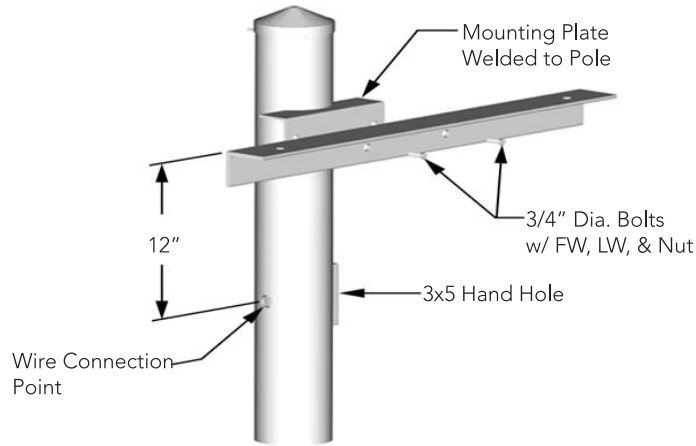
Catalog Number	Luminaire Quantity	EPA (ft ²)	Weight (lbs)
SPF-24	22-24	22.00	1121
SPF-21	19-21	18.33	622
SPF-18	16-18	15.70	567
SPF-15	13-15	12.90	466
SPF-12	10-12	10.10	364
SPF-9	0-9	7.75	270

Notes:

1. Platforms may be designed for rear-mounted fixtures, specify front and back quantities.
2. Multiple platforms may be used with subsequent platforms side-mounted, contact the factory for more information.
3. Optional pre-raced female receptacle provided at each fixture location. Consult factory for information.
4. Complete pre-wired systems are also available. Please contact factory for more information.



Accessories



<p>LL-ACR2</p>	<p>LL-ACR3</p>	<p>LL-ACR4</p>
<p>LL-ACR5</p>		<p>LL-ACR6</p>

Catalog Number	EPA (ft ²)	Weight (lbs)
LL-ACR2	1.74	30
LL-ACR3	2.73	47
LL-ACR4	3.97	68
LL-ACR5	5.95	103
LL-ACR6	7.37	127



Project Name	
Catalog #	
Job Type	
Prepared By	
Notes	

Ordering Information

Catalog Number	Pole Height (ft)	Pole Weight (lbs)	Anchor Bolts			Max Loading Capacities								Base Reaction		
			Bolt Circle (in)	Qty	Dimensions (in)	80 (mph)		90 (mph)		100 (mph)		110 (mph)		Axial (lbs)	Shear (lbs)	Moment (lbs)
						EPA (ft ²)	Wt (lbs)	EPA (ft ²)	Wt (lbs)	EPA (ft ²)	Wt (lbs)	EPA (ft ²)	Wt (lbs)			
LL-SPR-501-AB	50	448	14.0	4	1.25 x 42 x 6	14	350	10	250	7	175	5	125	800	1300	41100
LL-SPR-502-AB	50	645	14.0	4	1.25 x 42 x 6	23	575	18	450	14	350	11	275	1200	1600	58700
LL-SPR-503-AB	50	755	15.5	4	1.50 x 54 x 6	32	800	25	625	20	500	16	400	1500	1900	73600
LL-SPR-504-AB	50	856	16.5	4	1.50 x 54 x 6	41	1025	33	825	26	650	21	525	1800	2300	88700
LL-SPR-505-AB	50	964	17.5	4	1.75 x 54 x 6	52	1300	41	1025	32	800	25	625	2200	2600	103100
LL-SPR-506-AB	50	1268	18.0	4	1.75 x 54 x 6	71	1775	56	1400	45	1125	36	900	3000	3200	134500
LL-SPR-601-AB	60	1025	17.0	4	1.50 x 54 x 6	26	650	20	500	16	400	13	325	1700	1800	77500
LL-SPR-602-AB	60	1148	18.0	4	1.50 x 54 x 6	35	875	28	700	22	550	17	425	2000	2200	95600
LL-SPR-603-AB	60	1553	20.5	8	1.50 x 54 x 6	62	1550	50	1250	40	1000	32	800	3000	3400	163800
LL-SPR-604-AB	60	1695	21.5	8	1.50 x 54 x 6	81	2025	63	1575	49	1225	39	975	3400	4100	196100
LL-SPR-701-AB	70	1228	18.0	4	1.50 x 54 x 6	22	550	17	425	13	325	10	250	1800	1900	86200
LL-SPR-702-AB	70	1672	20.5	8	1.50 x 54 x 6	41	1025	33	825	26	650	21	525	2600	2800	145800
LL-SPR-703-AB	70	1834	21.5	8	1.50 x 54 x 6	55	1375	42	1050	34	850	28	700	3100	3400	183200
LL-SPR-704-AB	70	2033	22.5	8	1.50 x 54 x 6	75	1875	57	1425	44	1100	34	850	3800	4000	216400
LL-SPR-705-AB	70	2150	23.0	10	1.50 x 54 x 6	82	2050	63	1575	49	1225	37	925	4000	4200	233300
LL-SPR-801-AB	80	1946	21.5	8	1.50 x 54 x 6	39	975	28	700	22	550	19	475	2700	3000	170400
LL-SPR-802-AB	80	2169	22.5	8	1.50 x 54 x 6	49	1225	39	975	32	800	22	625	3300	3600	211400
LL-SPR-803-AB	80	2302	23.0	10	1.50 x 54 x 6	60	1500	48	1200	37	925	28	700	3700	4000	232500
LL-SPR-804-AB	80	2493	24.0	10	1.50 x 54 x 6	72	1800	55	1375	42	1025	33	825	4100	4400	266000
LL-SPR-805-AB	80	3481	25.5	8	1.75 x 54 x 6	111	2775	86	2150	67	1675	53	1325	6000	5800	377500
LL-SPR-901-AB	90	2278	22.5	8	1.50 x 54 x 6	33	825	26	650	22	550	17	425	3000	3400	204100
LL-SPR-902-AB	90	2425	23.0	10	1.50 x 54 x 6	40	1000	31	775	26	650	21	525	3300	3700	223100
LL-SPR-903-AB	90	2636	24.0	10	1.50 x 54 x 6	51	1275	40	1000	31	775	24	600	3700	4200	263600
LL-SPR-904-AB	90	3689	25.5	8	1.75 x 54 x 6	80	2000	64	1600	52	1300	41	1025	5400	5300	370000
LL-SPR-101-AB	100	2573	23.0	10	1.50 x 54 x 6	27	675	23	575	18	450	14	350	2900	3900	233000
LL-SPR-102-AB	100	2798	24.0	10	1.50 x 54 x 6	34	850	28	700	22	550	17	425	3300	4300	268100
LL-SPR-103-AB	100	3359	27.0	10	1.50 x 54 x 6	65	1625	49	1225	37	925	26	650	4600	5600	369000
LL-SPR-104-AB	100	4379	30.0	8	1.75 x 54 x 6	87	2175	68	1700	54	1350	40	1000	5600	7000	499800