

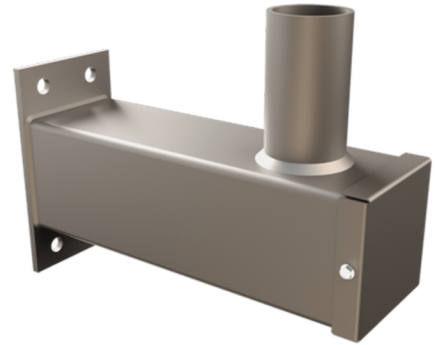


Square Straight Steel Tenon Arm Made in USA - Virginia

LL-VA-SSSTA

Square Straight Steel Tenon Arm

Square Straight Steel Tenon Arms are constructed of weldable-grade, cold-rolled, commercial quality 11 gauge carbon steel tubing conforming to ASTM A500 Grade B. All welds shall conform to AWS D1.1 using ER70S-6 electrodes. Stainless Steel Mounting Hardware is included. Center Hubs are 4" Square. Custom designs including varying Square Arm diameters, Arm dimensions, and Center Hub sizes to accommodate varying Tenons are available.

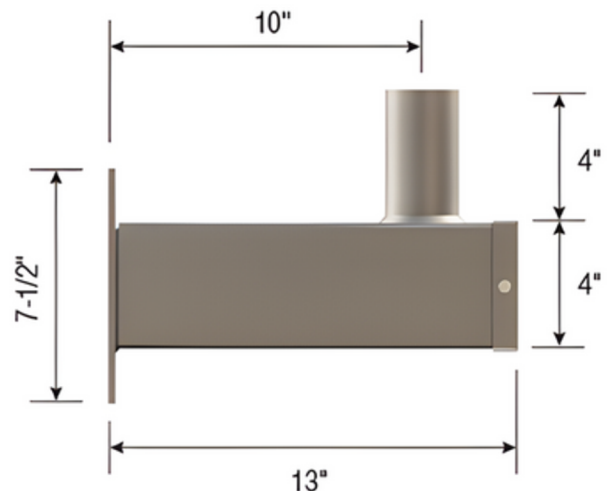
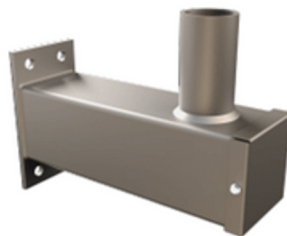


PRODUCT INFORMATION

Catalog Number	Description	Use with Tenon Size	Bracket EPA	Bracket Weight
LL-VA-SSSTA-1	Single	-	0.5 ft ²	14.2 lbs
LL-VA-SSSTA-2180	Double	2" NPS (2 3/8" O.D.) x 5"	1.4 ft ²	28.6 lbs
LL-VA-SSSTA-3180	Triple - 180°	2" NPS (2 3/8" O.D.) x 5"	2.4 ft ²	50.5 lbs
LL-VA-SSSTA-490	Quad - 90°	2" NPS (2 3/8" O.D.) x 5"	2.4 ft ² (shielded)	60.2 lbs
LL-VA-SSSTA-4180	Quad - 180°	2" NPS (2 3/8" O.D.) x 5"	2.4 ft ²	52.1 lbs

Single

LL-VA-SSSTA-1

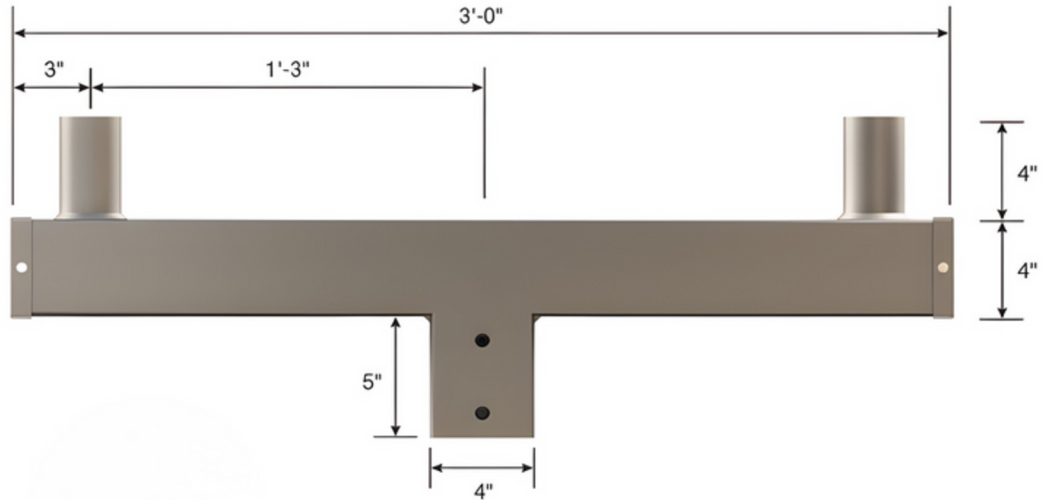




Square Straight Steel Tenon Arm Made in USA - Virginia

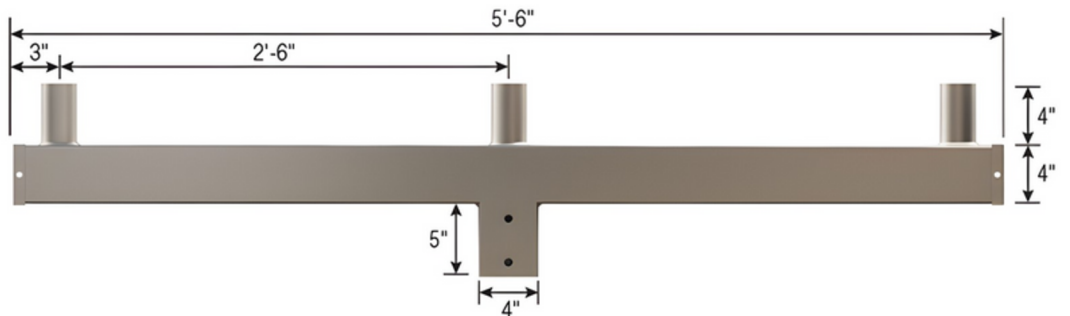
Double

LL-VA-SSSTA-2180



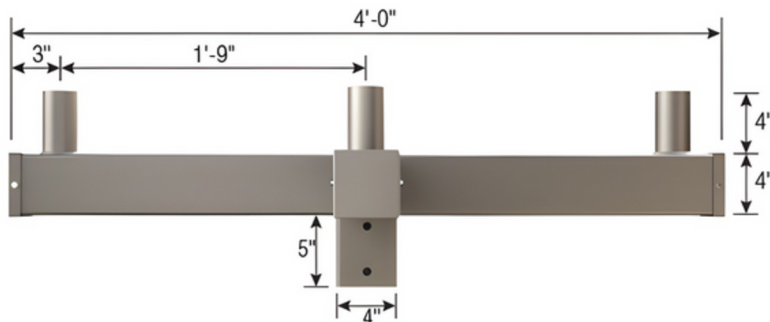
Triple - 180°

LL-VA-SSSTA-3180



Quad - 90°

LL-VA-SSSTA-490

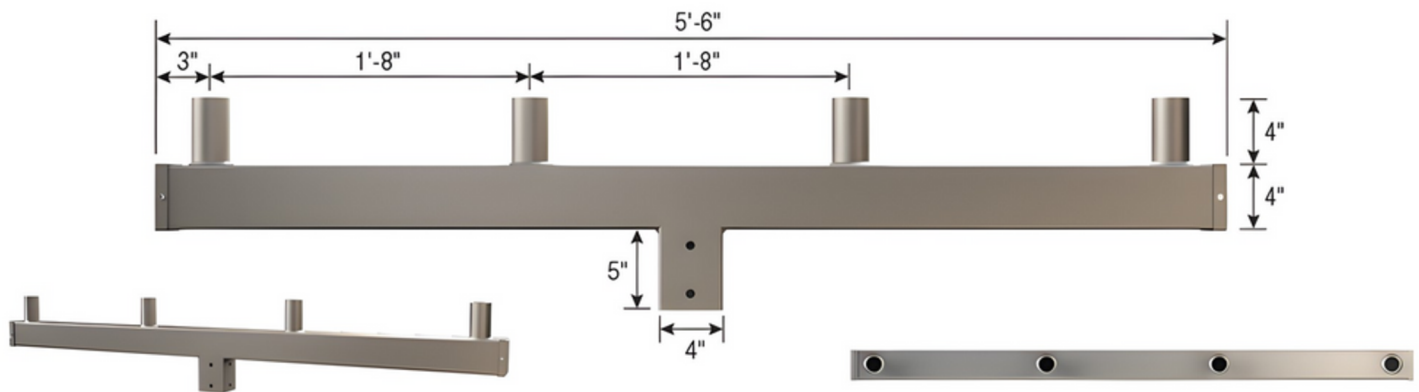




Square Straight Steel Tenon Arm Made in USA - Virginia

Quad - 180°

LL-VA-SSSTA-4180



PROJECT NAME	
CATALOG #	
JOB TYPE	
PREPARED BY	
NOTES	

ORDERING GUIDE		
Brand	Location	Type
LL LITELUME	VA Virginia	SSSTA Square Straight Steel Tenon Arm
Tenon Orientation		Finish
1 1 2180 2 @ 180 Degrees 3180 3 @ 180 Degrees 490 4 @ 90 Degrees 4180 4 @ 180 Degrees		BK Black Powder Coat WH White Powder Coat DBZ Dark Bronze Powder Coat DGR Dark Green Powder Coat GY Gray Powder Coat CUS Custom Color*

NOTE: Provide RAL Paint Code