



Vanity Modern Series



Description

The LITELUME™ Vanity Modern (LL-VM) features a die-formed cold rolled steel housing in satin nickel or oil rubbed bronze with a high transmission acrylic shade for an elegant soft appearance.

Applications: Hallways, Vanity lighting

Fixture Information

Size:	17W/23W/35W
Housing:	Die-formed cold rolled steel
Finish:	Protective powder coat
Color:	Standard: Satin Nickel (SN) Optional: Oil Rubbed Bronze (ORB)
Mounting:	Standard: Wall Mount
Lens:	High transmission acrylic
CRI:	80
Power Factor:	.98
Dimming:	None
THD:	<10%
Voltage:	Standard: 120V
Warranty:	10-Year Limited Warranty

Performance Data

Lumen Output:

1500 to 3200 lm

Lumens Per Watt (typical):

100 lm/W

CCT:

3000K
3500K
4000K

Lifespan:

60,000 running hours

Ratings & Certificates

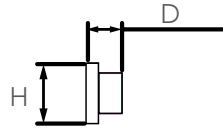
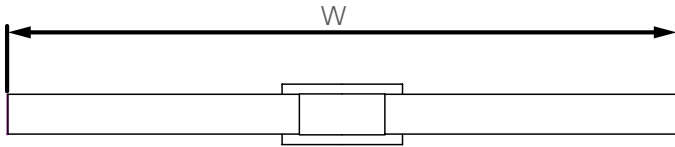
ETL/cETL Listed





Dimension

Item	Width	Height	Depth
19W	23.75"	4.25"	2.50"
23W	36.00"	4.25"	2.50"
35W	48.00"	4.25"	2.50"





Project Name	
Catalog #	
Job Type	
Prepared By	
Notes	

Fixture Ordering Information

Part #	Wattage	Lumens	Kelvin	Voltage	Color
LL-VM-17-3CCT-UNV-SN	17	1500	3000K 3500K 4000K	120-277V	Satin Nickel
LL-VM-17-3CCT-UNV-ORB	17	1500	3000K 3500K 4000K	120-277V	Oil Rubbed Bronze
LL-VM-23-3CCT-UNV-SN	23	1900	3000K 3500K 4000K	120-277V	Satin Nickel
LL-VM-23-3CCT-UNV-ORB	23	1900	3000K 3500K 4000K	120-277V	Oil Rubbed Bronze
LL-VM-35-3CCT-UNV-SN	35	3200	3000K 3500K 4000K	120-277V	Satin Nickel
LL-VM-35-3CCT-UNV-ORB	35	3200	3000K 3500K 4000K	120-277V	Oil Rubbed Bronze