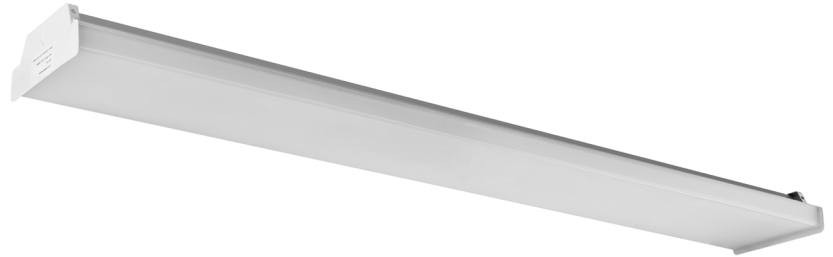




Wrap Around Premium



*Not all product variations listed on this page are DLC qualified. Visit www.designlights.org/search to confirm qualification



Description

The Litelume LED Wrap Around Premium (LL-WAPR) is a ceiling mounted luminaire designed for retrofit or new construction. This fixture adopts the latest in optical and LED technology providing an evenly pleasant illuminance. Featuring 3 level lumen output and 3 color adjustable CCT, allowing for customized energy savings and comfortability. High Power factor .90 and low THD.

Fixture Information

Size:	30W/35W/40W
Color:	Standard: White
Mounting:	Standard: Ceiling
Operating Temperature:	-4°F to 12°F
Power Factor:	>.98
CRI:	80
Dimmable:	Standard: 0-10v continuous, can dim down to 10%
Voltage:	Standard: 120-277V
Warranty:	10-Year Limited Warranty

Performance Data

Lumen Output:

4,110 to 5,240 lm

Lumens Per Watt (typical):

130 lm/W

CCT:

3500K

4000K

5000K

Lifespan:

Features SMD 2835 LED's with up to 100,000 running hours

Ratings & Certificates

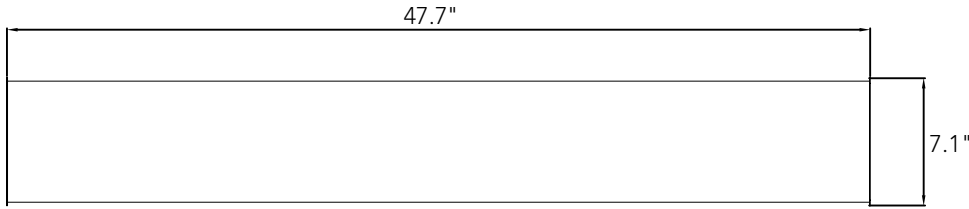
UL Listed For Damp Location
DLC Premium Listed



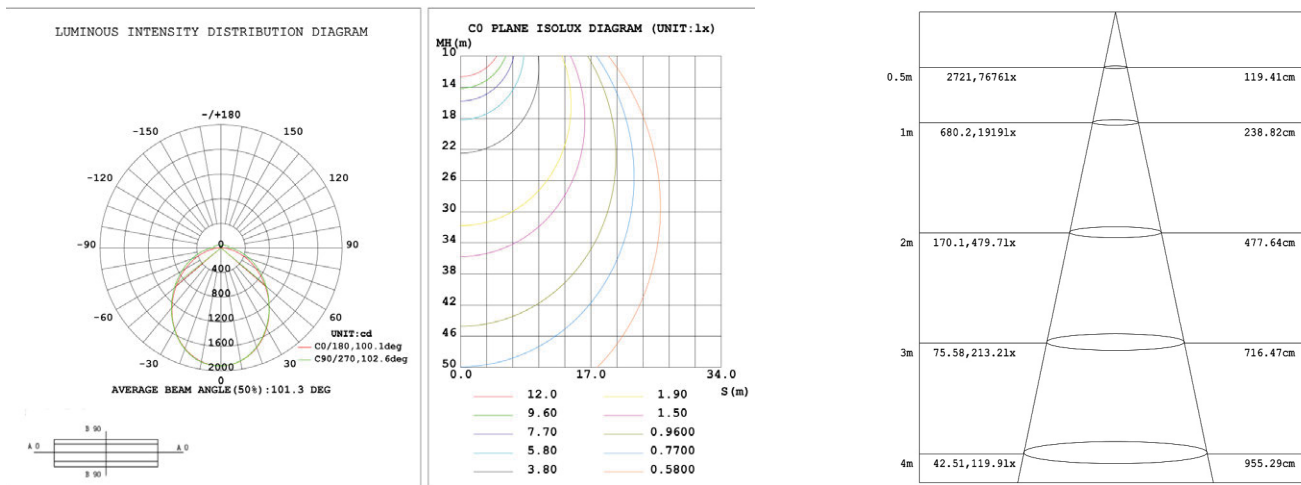


Dimension

Item	Length	Width	Depth	Weight
Wrap Around Premium	47.7"	7.1"	2.8"	7.94 lbs

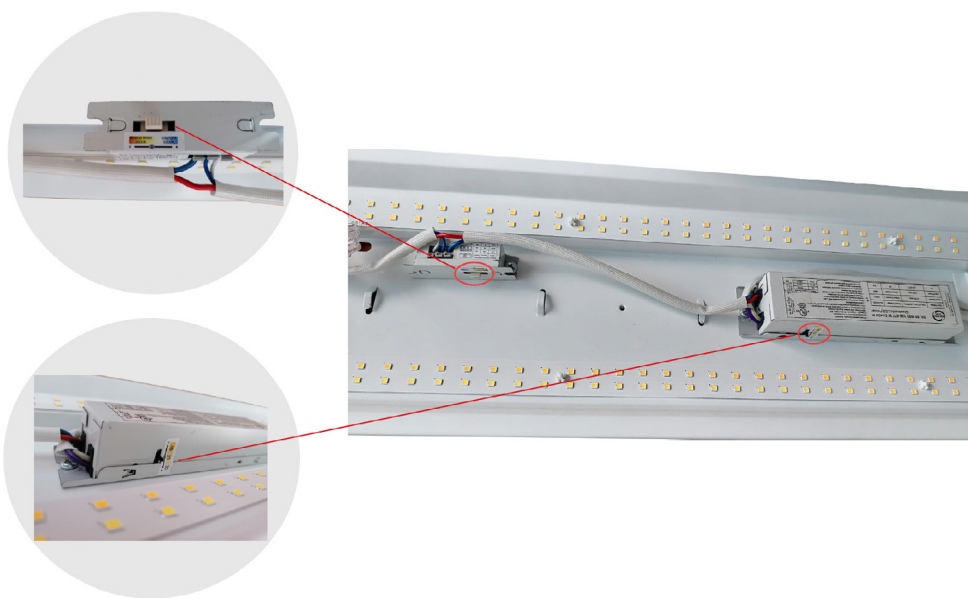


Photometrics



Control Module

The Litelume LED Wrap Around Premium can adjust the power and color temperature of the whole lamp conveniently and fast to the customer's needs.





Project Name	
Catalog #	
Job Type	
Prepared By	
Notes	

Fixture Ordering Information

Part #	Wattage	Lumens	Kelvin	Voltage
LL-WAPR-[30][35][40]-3CCT-UNV	30W 35W 40W	4110/4690/5240	3500K 4000K 5000K	120-277

* Please contact LITELUME for all Custom Option Requests

Accessories Ordering Information

Part #	Description
BRI810-C-F	Sharkward 120/277V 0-10V Microwave Motion Sensor
RC100	Remote Control 100
AC-MWS105E-FA102	Autani Compatible - Keilton MWS105E Integrated 12V Eco Microwave Sensor & FA102 Integrated Fixture Adapter LLLC
EM8	Emergency Battery Backup, 8W, 90 minutes

* Please contact LITELUME for all Custom Option Requests